

SCANSONIC

S5  
active



USER MANUAL  
MODE D'EMPLOI  
BEDIENUNGSANLEITUNG  
INSTRUCTIEHANDLEIDING  
BETJENINGSVEJLEDNING  
BRUKSANVIŚNING  
KÄYTTÖOHJE  
ISTRUZIONI PER L'USO  
MANUAL DEL USUARIO  
MANUAL DO UTILIZADOR

SCANSONIC  
HIFI LOUDSPEAKERS



## Contents

02CONTENTS

03SAFETY

04INFORMATION

05FRONT- AND REARPANEL

06REMOTE CONTROL

07CONNECTING YOUR SPEAKERS

08USE WITH IPOD / MP3 PLAYER

09USE WITH DOCKINGSTATION

10USE WITH TV, DVD, CONSOLE, PC

11LIMITED WARRANTY

Congratulations on your new S5 Active speakers.  
Please take a moment to read this manual.  
Enjoy

## Safety

### Safety Instructions

*Please store this instruction manual for future reference.*

- Do not use this product near water or moisture. Clean only with a dry cloth. Unplug this product from the wall outlet before cleaning.
- Place the unit on a solid surface. Do not block any ventilation openings.
- Do not put it in a closed bookcase or a cabinet that may keep air from flowing through its ventilation openings.
- Do not install near any heat sources, such as radiators, heat registers, stoves or other appliances that produce heat.
- Protect the power cord from being walked on or pinched, particularly at plugs and the point where they exit from the product.
- Servicing is required when the product has been damaged. Do not attempt to service this product yourself. Opening or removing covers may expose you to dangerous voltages or other hazards. Please contact the manufacturer to be referred to an authorized service center near you.
- To prevent risk of fire or electric shock, avoid over loading wall outlets, extension cords, or integral convenience receptacles .
- Do not let objects or liquids enter the product.
- Use proper power sources. Plug the product into a proper power source, as described in the operating instructions or as marked on the product.



## Information

### Unpacking

These ScanSonic speakers were carefully tested and inspected during production and before packaging and shipping. After unpacking please check for any damage. It is rare that a unit is damaged during shipping, but if this does happen contact your retailer immediately.

We recommend that you keep the original carton and packing material for future shipping.

### Recommended Speaker Setup

Correct speaker placement has a huge impact on sound quality. There are many different theories, but all rooms and tastes are different so it's impossible to specify a correct placement. We do suggest you experiment with a few different locations to see what is best for you.

For the best bass response on ScanSonic, we recommend that you keep a minimum distance of 20-25 cm between the speakers and the rear wall. For height, position the speakers with the tweeters at eye level of your most common listening position.

### Speaker Conditioning and Break-in

Although a break-in period is not required, we recommend that you play between 24 to 48 hours of music through the speakers before doing any critical listening or speaker placement.

### Speaker Cleaning

We don't recommend using any solvents or cleaners on cabinets or speaker driveunits. Just wipe down with a soft, dry cloth.

## Front- and rearpanel



3

4

**01**BASS REFLEX PORT TUBE

**02**POWER ON / OFF

**03**LED INDICATOR LIGHT

It will show blue in normal working status.  
It will turn off when no signal comes for approx. 10 minutes (auto standby).

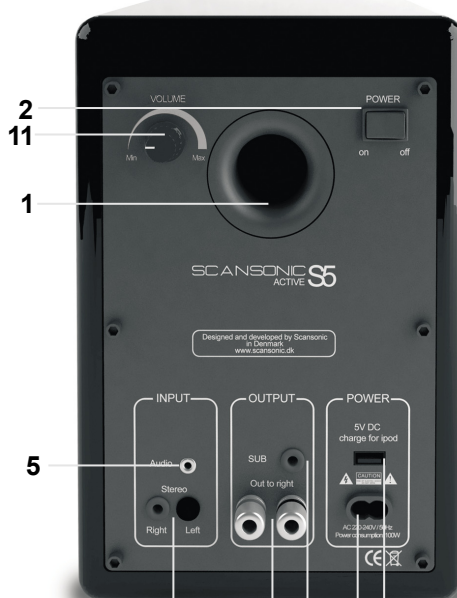
**04**REMOTE RECEIVER

**05**AUDIO INPUT

For 35mm minijack plug, from iPod, PC etc.

**06**STEREO INPUT

For right / left RCA stereo plugs, from CD /



2  
11

1

5

6

7

8

9

10

DVD player.

**07**RIGHT CHANNEL OUTPUT

Signal output, for connecting the passive S5 speaker.

**08**SUB OUTPUT

For connecting active subwoofer

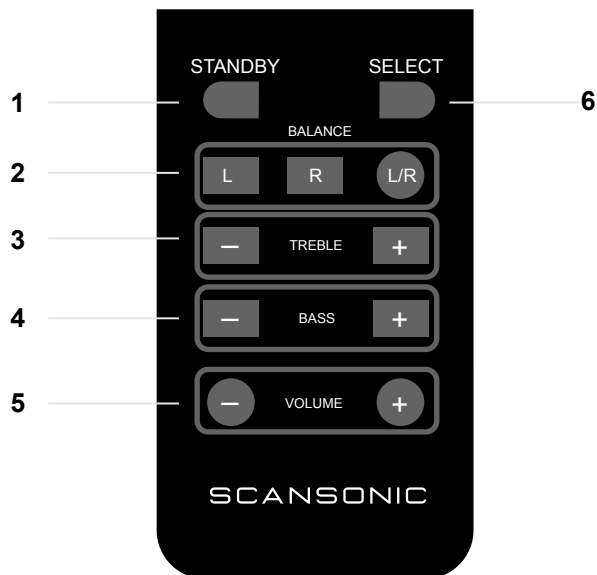
**09**POWER SUPPLY INPUT

**10**IPOD CHARGE SOCKET

5v DC for charge of iPod

**11**VOLUME KNOB

## Remote control



### **01**STANDBY BUTTON

Press to enter standby mode.

### **02**BALANCE BUTTON

Press "L" button, then right channel will switch off gradually. Press "R" button, then the left channel will switch off gradually. Press "L/R" button, stereo balance will reset.

### **03**TREBLE BUTTON

Press "-", then treble will be decreased;  
Press "+", then treble will be increased.

### **04**BASS BUTTON

Press "-", then bass will be decreased.  
Press "+", then bass will be increased.

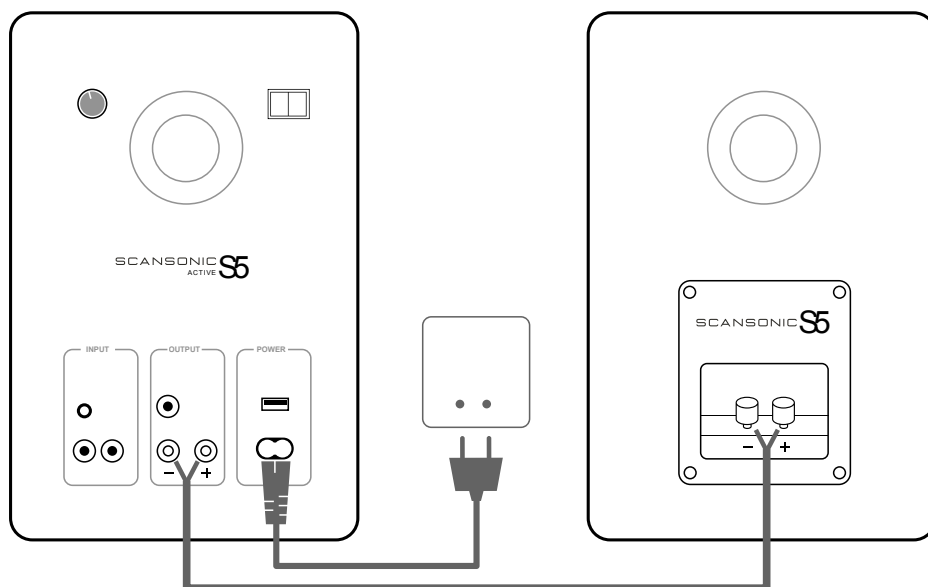
### **05**VOLUME BUTTON

Press "-", then volume will be decreased;  
Press "+", then volume will be increased.

### **06**INPUT SELECT BUTTON

By pressing this button, input signal can be selected between Audio Input (3.5 minijack) or Stereo Input (RCA stereo plugs).

## Connecting your speakers



### STEP 1

Connect the RED (+) and BLACK (-) terminals from the left speaker to the corresponding terminals on the right speaker using the included speaker cable. Insulation on cable must be stripped on all ends.

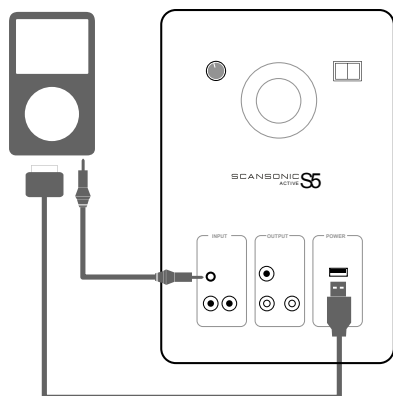
Note: Because this ScanSonic system is self-powered, do not connect the speaker terminals to the speaker outputs of a stereo receiver.

### STEP 2

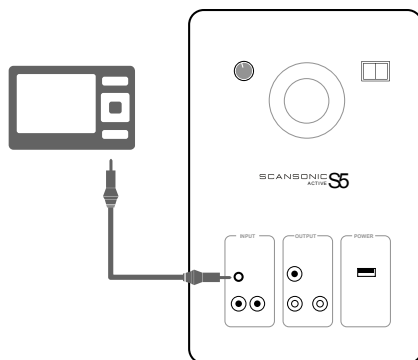
Connect the power cord into the left speaker and the other end into the wall outlet.

## Use with iPod / MP3 player

A



B



### CONFIGURATION A (for use with iPod):

For charging your iPod while playing, connect the 30 -pin cable from the iPod to USB jack on the rear panel.

Connect the 35mm mini-jack audio cable from iPod headphone jack to the AUDIO IN jack on the rear panel of S5 Active.

### CONFIGURATION B (all products with 35mm minijack outputs):

Connect the STEREO INPUT L/R from any audio source with RCA L/R audio outputs.

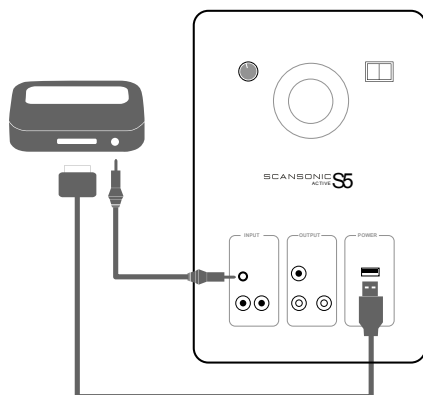
Connect the 35mm mini-jack audio cable from 35 minijack output to the AUDIO IN jack on the rear panel.

Attention: When connecting audio cables the power switch must be turned OFF. After connecting alle cables the power can be turned ON and the system is now ready to use.

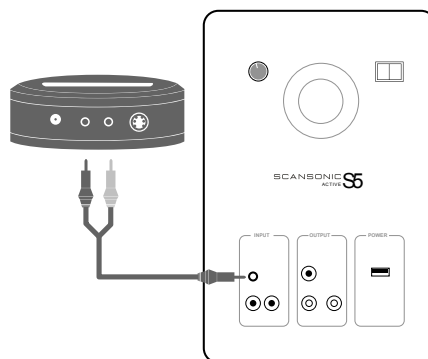


## Use with dockingstation

A



B



### **CONFIGURATION A** (For use with iPod Universal Dockingstation):

Place the dockingstation next to your Scansonic S5 speakers. Connect the Apple 30-pin cable from the dock to USB jack on the rear panel.

Connect the included 35mm minijack audio cable from the dock to AUDIO IN jack on rear panel.

Insert you iPod in dock, set the volume and enjoy.

### **CONFIGURATION B** (For use with Scansonic Dockingstation):

Place the dockingstation next to your Scansonic S5 speakers.

Connect the included 35mm minijack audio cable from the dock to AUDIO IN jack on rear panel.

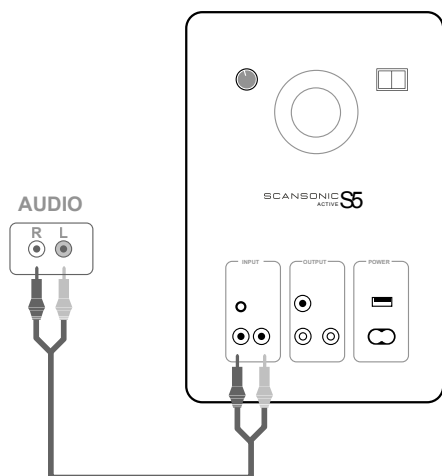
Make sure that your Scansonic dock is powered (netadapter).

Insert your iPod in dock, set the volume and enjoy.

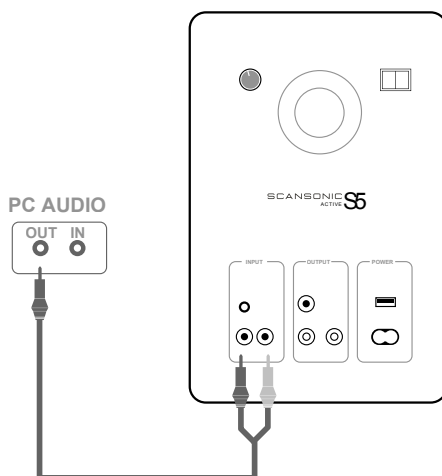
Attention: When connecting audio cables the power switch must be turned OFF. After connecting alle cables the power can be turned ON and the system is now ready to use.

## Connect TV, DVD, console, PC

**A**



**B**



### **CONFIGURATION A** (TV, DVD, CD - RCA stereo plugs) :

Connect the RCA L/R to your TV, DVD etc. and the RCA L/R to the Stereo Input on rear panel of the Scansonic S5 Active

Note that most newer TV remotes can control the Scansonic S5 active speaker volume if connected to variable TV audio out.

### **CONFIGURATION B** (PC) :

Connect the minijack to your PC and the RCA L/R to the Stereo Input on rear panel of the Scansonic S5 Active.



## Limited Warranty

Dear Customer,

This product has been designed and manufactured to the highest quality standards, however if something goes wrong with this product, Scansonic and the country distributor warrants free replacement parts or repair by the official Scansonic distributor.

This limited warranty is valid for the original owner for a period of two years from the date of purchase, it is not transferable.

### **What is covered by the limited warranty:**

The limited warranty covers all production and material defects of the product, except for the damages stated below.

### **What is not covered by the limited warranty:**

Damages caused by packing and transport

Defects caused by accidents, misuse, normal wear and tear, mis-maintenance, voltage variation and overloading.

Damages caused by incorrect installation or operation

Damages caused by modification or repair by a nonauthorised service centre and use of non-original spare parts

Other damages due to conditions beyond the supplier's control such as fire, rain, stroke of lightning, war and other force majeure events

### **How to claim parts or repair under warranty:**

To have your product serviced under warranty, you must contact the dealer from where you bought the product.

You will need to produce this warranty booklet completed and stamped by your dealer on the date of purchase. Alternatively, you will need the original sales invoice or other proof of ownership and date of purchase.

The supplier is liable only to repair or replace defective parts or products and the supplier is not responsible for indirect losses or damages arising from the use of the product.

Transportation costs for servicing are not covered by the warranty.

A service repair or replacement cannot exceed the value of the product under warranty, in no event shall the supplier be responsible or liable for special, incidental, consequential or indirect damages.

**Dealer name and stamp:**

**Date of purchase:**

-----

-----

**enjoy**

[www.scansonic.dk](http://www.scansonic.dk)