

Attessa Turntable

Set Up Guide and Product Manual



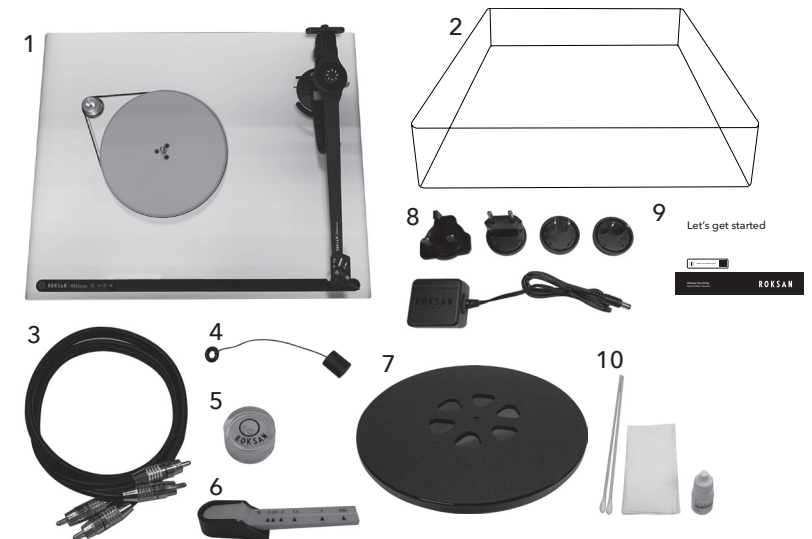
ROKSAN

roksan.com

CONTENTS

CONTENTS	1	OPERATION	7
WHAT'S IN THE BOX	1	EU DIRECTIVES	8
UNPACKING	2	MAINTENANCE	8
INTRODUCTION	3	Cleaning	8
ASSEMBLY & SETUP	3	Changing the Oil	8
INSTALLATION	6	TROUBLESHOOTING	9
Signal	6	SPECIFICATION	10
Power	7		

WHAT'S IN THE BOX

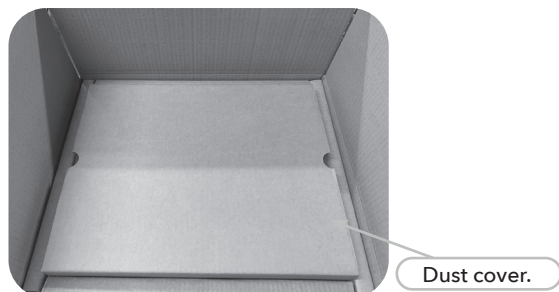


- | | |
|---|--|
| 1. Attessa Turntable with Dana Tonearm and Dana Cartridge | 6. Tracking Weight Scales |
| 2. Dust Cover | 7. Platter & Mat |
| 3. RCA Phono Cable | 8. Power Supply and Region Specific Adaptors |
| 4. Anti Skate Weight | 9. Quick Start Guide |
| 5. Spirit Level | 10. Oil Kit |

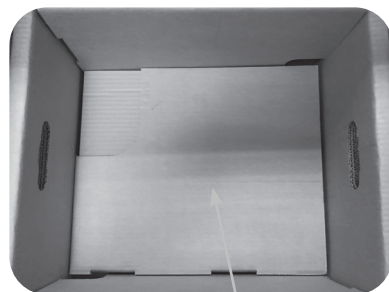
UNPACKING

The Attessa Turntable is carefully packed and is designed to withstand transportation so you can enjoy your turntable as soon as you get home. Follow the steps below to remove the components of the turntable from the packaging and place them out on a table or floor in preparation for the final assembly of the turntable.

1. Remove the dust cover in its packaging to reveal the assembled turntable. Remove the transit card that holds the tonearm in place. Within the protection card you will find the RCA cables.



2. Lift the turntable from the packaging - It might be easier to remove the side sections of packaging first. Under the turntable is the platter and power supply.



INTRODUCTION

The Roksan Attessa Turntable comes pre-assembled ready for use, with built in phono stage, tonearm and cartridge.

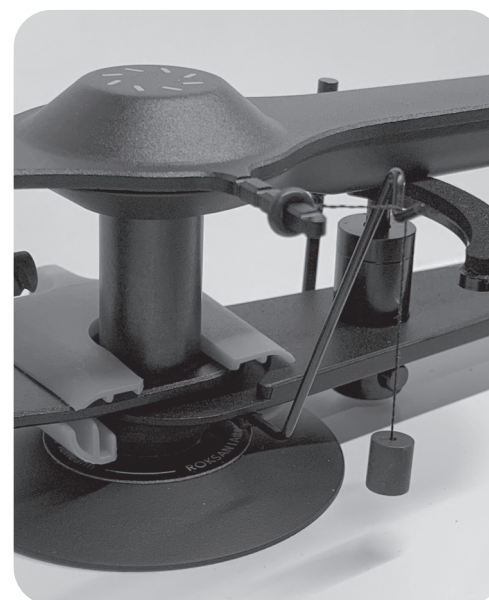
There is a low voltage power supply with 4 mains plug region adaptors. Select the right one for your country/ region.

ASSEMBLY & SETUP

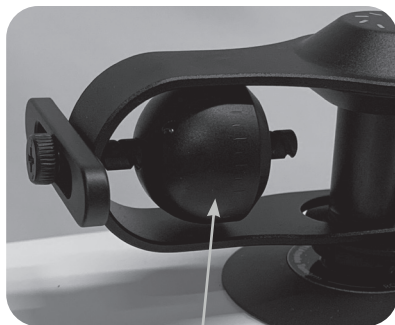
1. Remove the turntable from its bag and place it in its final location.
2. Ensure the belt is still in place between the motor and the sub platter.
3. Remove the platter from its bag and carefully locate its central hole over the main bearing spindle and gently lower it until the two are fitted together.

NOTE: The main bearing is already charged with the correct type of oil and it is important that the main bearing spindle is not removed from the bearing housing. This will disperse some of the oil and necessitate charging the main bearing with oil again. The main bearing requires cleaning with a cotton bud and recharging with Roksan supplied bearing oil every 6-12 months. Consult your Roksan appointed retailer/ distributor or contact Roksan for any assistance.

4. Fit the anti-skate weight's O Ring (at the end of the thread) over the upper small horizontal bar (anti-skate peg) on the side of the arm carrier. Push the O ring along to the second or third groove. Drape the thread over the anti-skate hanger in front of the anti-skate peg so that weight hangs freely. It will rise as the arm travels towards the centre of a record.

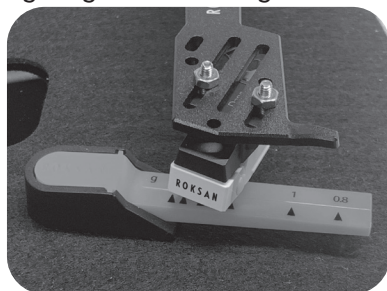


5. Remove the orange tonearm clamp. Please keep this as it will be used to lock the arm in place when the turntable is not in use.
6. The tracking weight will need to be set as the weight itself is in its transit position. The tracking weight should be: 1.8 - 2.2 g (2.0 g standard). To begin, rotate the counter weight so that it moves to about midway along the threaded bar.

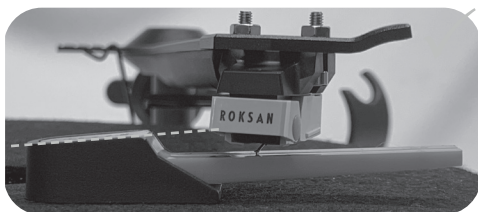


Counter Weight

7. Place your stylus balance on the Turntable platter, remove the cartridge's stylus guard and check the tracking weight by gently lowering the stylus into the groove over the desired tracking weight marker - 2.0g.



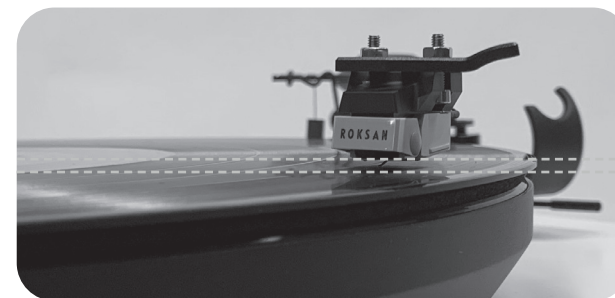
8. The rear of the orange scale with the Roksan logo should be flush with the black plastic housing.



9. If the tracking weight is too heavy, raise the arm and adjust the counterweight back a little. If it is too light, adjust the counterweight forward a little.

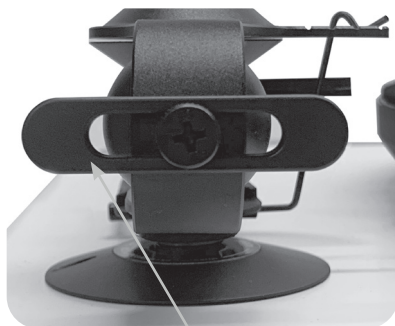


10. Repeat step 7 until the correct tracking weight (down-force) is achieved and then return the arm to its rest and tighten the locking screw up on the counterweight.
11. Remove the scales but keep them to hand as they may be required again. Replace the mat onto the platter if it was previously removed.
12. To check the azimuth of the arm you will need a record. Gently lower the arm and cartridge onto the record about 1 or 2 cm's from the beginning without switching the turntable on.
13. Looking from the front down the length of the arm see if the head shell is parallel left to right with the record surface.



14. If adjustment is required, return the arm to its rest and refer to the next step. If no adjustment is needed your arm is set up and ready to use and continue to step 17.

15. Adjust the azimuth of the arm by loosening the locking screw and sliding the bar left or right accordingly. Recheck by moving the arm back onto the record to see if it is now parallel. Repeat this until the head shell is parallel with the record.



Azimuth Balance

16. When the head shell is parallel left to right, return the arm to its rest, close the clip and tighten the azimuth weight's thumb screw up.
17. If you wish to recheck arm height, cartridge alignment, azimuth and cartridge tracking weight (down-force), please do.

INSTALLATION

Signal

Connect the supplied RCA phono cable from the outputs on the turntable to the inputs on your amplifier. The Attessa has a built in phono stage, so you do not need to connect it to the phono stage input on your amplifier. One of the other standard inputs should be used.



If you wish to use your amplifier's phono stage, or a separate phono stage, adjust the switch on the back of the turntable to the Passive position. Leaving it in the Active position utilises the on-board phono stage.



Power

Assemble the country specific mains plug onto the power supply. Connect the power supply to the Attessa Turntable and then to the wall outlet. Where applicable, turn on the power supply at the mains outlet.



OPERATION

Now your turntable is ready for use, switch it on using the Power Button and ensure the correct speed is selected by pressing the 33 or 45 buttons.



Power Button

33 RPM

45 RPM

Check the amplifier volume is set to a low level and that the correct input for your turntable is selected. Gently increase the volume and check for any unwanted hum/noise. Now check the hum level with the amplifier at high volume. There should be no hum or very low level of hum audible (remember to lower the volume afterwards). If so, gently lower the arm/ cartridge onto the track you want to listen to and enjoy the music.

When finished listening to the turntable, replace the orange tonearm clamp, flip the stylus guard down and place the dust cover over the deck.

EU DIRECTIVES



Roksan declares that the apparatus "Atessa Turntable" complies with the essential requirements and other relevant provisions of Directive 1999/5/EC".

MAINTENANCE

Cleaning

To clean the turntable, belt and change the oil you will need:

- Some kitchen towel
- A micro fibre cloth
- Some Q-tips
- White spirit
- Wax-based furniture polish
- Roksan bearing oil kit (supplied).

Clean the groove in the motor pulley where the belt locates with a Q-tip dipped in white spirit.

The belt is cleaned with the furniture polish by using some kitchen towel by gently pulling it through the paper between the fingers.

When cleaning the plinths, be careful of your stylus. We would recommend locking the arm in place in addition to removing the stylus or at the very least using the stylus guard.



NOTE: Always remove the platter before moving/ transporting the turntable.

Changing the Oil

To keep the turntable running at its optimum, the oil should be changed every 6 months.

To change the oil, have some kitchen towel ready and gently pull the central bearing out. Wipe any oil off the shaft with the kitchen towel and clean the top of the bearing housing in the plinth. Dip a Q-tip in some white spirit and clean out the old oil from the main bearing reservoir. Repeat this process until there is no more oil and no white spirit remaining in the reservoir. Leave for five to ten minutes to fully dry out. When the male and female parts of the bearing are clean and dry, put five drops of oil in to the bearing reservoir. Let the bearing shaft drop under its own weight in to the reservoir. If this takes more than a couple of minutes, remove it and clean the oil off the shaft and see if it then settles better. What you are looking for is the bearing to settle down completely with just a little oil visible between the two plates of the male and female parts.

TROUBLESHOOTING

If you suspect that your Atessa turntable is not working correctly, first check all the connections. Pay particular attention to cartridge tag connections (channel & phase), tonearm cable connections (phono RCA's) and mains power supply connection. Below are some commonly encountered problems with suggestions for possible cure. The list is not exhaustive: If you have any unresolved problems, please consult Roksan or your Roksan dealer.

SYMPTOM	LIKELY CAUSE	SUGGESTED REMEDY
<ul style="list-style-type: none">• No power.	<ul style="list-style-type: none">• Power supply lead not inserted properly• Unit not switched on.	<ul style="list-style-type: none">• Ensure power supply is fully inserted• Switch unit on.
<ul style="list-style-type: none">• Wrong speed.	<ul style="list-style-type: none">• Incorrect speed selected.	<ul style="list-style-type: none">• Check playing speed of record and select the correct speed on the turntable.
<ul style="list-style-type: none">• Hum from loudspeakers.	<ul style="list-style-type: none">• Tonearm cable ground not connected or incorrect grounding.	<ul style="list-style-type: none">• Check mains polarity and grounding on all connected equipment.
<ul style="list-style-type: none">• Mis-tracking and poor sound quality.	<ul style="list-style-type: none">• Alignment/ balance problem.	<ul style="list-style-type: none">• Check the tonearm/ cartridge set up.

SPECIFICATION

Material Specification

Plinth: Isolated single plinth design

Isolation: 1-level decoupling

Platter: High mass tempered 10mm glass trimmed with spun and anodised Aluminium edging.

Platter weight: 1.82 Kg

Pulley: Machined high-grade aluminium

Main Bearing Spindle: Stainless steel (Grade 303)

Main Bearing Ball: Stainless Steel (Grade 316)

Main Bearing Housing: Brass (Grade CZ 121)

Removable Dust Cover: Bespoke moulded PMMA acrylic

Tonearm:

Tonearm Type: Unipivot

Tonearm Bearing: Single jewel.

Bearing: Stainless steel unipivot

Arm Material: Hybrid construction. Precision formed 5052 Aluminium top with lightweight ABS bottom section.

Internal wiring: 0.08 OFC copper wire

Effective Mass: 14.9 g

Recommended Tracking Weight: 1.8-2.2 g (2.0 g standard)

Effective Length: 240 mm

Overhang: 17.5 mm

Headshell Offset Angle: 22.9 degrees

Cartridge:

Recommended Load Capacitance: 50-100 pF

Recommended Load Impedance: 47 k Ω

Vertical Tracking Angle: 23 degrees

Stylus Tip: Diamond titanium

DC Resistance: 800 Ω \pm 20%

Coil Impedance: 3.2 k Ω \pm 20% @ 1 kHz

Output Voltage: 3.5 mV \pm 3 dB @ 1 kHz

Output Balance: 1.5 dB or less @ 1 kHz

Frequency Response: Measurement point 10 kHz / 1 kHz + 1 dB \sim +7dB

Channel Separation: Measurement point 1 kHz over 22 dB

Turntable:

Max Speed Variation: \pm 0.54% at 33.3 RPM

Rumble (silent groove, unweighted): -44.36 dB

Dimensions

Width: 432 mm

Height (inc. feet): 104.5 mm

Height (inc. feet and lid): 115 mm

Depth (inc. connectors): 283 mm

Weight (unpacked): 6.32 Kg

Technical

Motor: 24 Pole synchronous

Speed Controller: Built in high precision digitally synthesised AC signal generator with high current low distortion output

Speed: 33 RPM & 45 RPM (Switchable)

Phono Stage: Built in MM phono stage

Phono Stage Bypass: Yes, (switchable on rear)

Phono stage gain (1 kHz): 46 dB

Phono Stage Signal to Noise (5 mV, 1 kHz sine wave, A-weighted): 70 dB

THD+N (5 mV, 1 kHz sine wave): 0.04%

Phono Stage output impedance: \sim 56 Ω

Outputs

Phono Output: Stereo RCA with supplied low capacitance phono cable

Power

Mains input: 5 V 1.5 A external SMPS (Operational down to 85 VAC)

Power consumption: <0.5 W in standby. Full Power: 25 W max

All specifications are liable to change without prior notice. E & O.E.

ROKSAN

**MADE IN
BRITAIN**



**Designed and built
in Great Britain.**

Roksan.com
Info@roksan.com

Version 1. 2021

Roksan
24 Brook Road,
Rayleigh, Essex
SS6 7XJ, UK
+44 (0)1268 798900
info@roksan.com
roksan.com