



# NS-SW1000

Advanced YST and Twisted Flare Port Subwoofer

---

NEW PRODUCT BULLETIN

---



*Powered by music*



# NS-SW1000

Advanced YST and Twisted Flare Port Subwoofer

NEW PRODUCT BULLETIN

 **YAMAHA** SUBWOOFER NS-SW1000



Hear what couldn't be heard.  
See what couldn't be seen.

The NS-SW1000 is a new Yamaha high-end subwoofer faithfully utilising Advanced YST II (Yamaha Active Servo Technology II) polished over the span of a quarter century to achieve highly musical reproduction of exceedingly low bass frequencies. The main themes in developing this model were completely achieving “both high sound quality and high output power” and “both HiFi and theatre reproduction”. While maintaining the huge power output and sound levels of the previous YST-SW1500, the NS-SW1000 aims to deliver uncompromisingly delicate musical expression that brings out the individuality of the main speaker. For that reason, maximum priority was given to creating an extremely efficient speaker within which to employ the unique A-YSTII technology. The foundation for this is the massive 19kg (41.9 lbs) high strength, heavy enclosure around the 30cm (12”) woofer unit with double magnets, the all-new Yamaha digital amplifier IC, and the high 1kW output power amplifier incorporating a large analogue power supply. These three elements fuse an extraordinary scale with traditional musicality to bring you deep, tight, authentic bass that's perfect for watching movies, listening to multi-channel audio or music videos, or for bringing dramatic richness to high-end audio systems.



# NS-SW1000

Advanced YST and Twisted Flare Port Subwoofer

NEW PRODUCT BULLETIN

Crossing the border between HiFi and theatre sound reproduction, deep, tight bass brings out the individuality of the main speaker system. Yamaha's new subwoofer proudly brings you 1kW of output power.



## NS-SW1000

Advanced YST and Twisted Flare Port Subwoofer



- ☐ High strength, heavy enclosure with twisted flare port
- ☐ 1kW digital power amplifier using the latest digital devices and a huge analogue power supply
- ☐ All-new 30cm (12") subwoofer combining a double magnet and a Kevlar composite cone
- ☐ High-class external design with a choice of normal or piano finish

# NS-SW1000

Advanced YST and Twisted Flare Port Subwoofer

NEW PRODUCT BULLETIN

## High Strength, Heavy Enclosure Structure Using Traditional three-way mitered-joint construction

The cabinet employs a massive 19kg (41.9 lbs) high strength, heavy bass reflex enclosure constructed of thick 36mm (1-3/8") MDF (medium-density fiberboard) on the baffle sides and 25mm (1") MDF on the other sides with traditional three-way mitered-joint construction. It has a strong resonance-resisting structure with cast-iron legs and a front-firing design with the woofer unit attached to the front of the enclosure. It delivers direct, razor-sharp sound that's ideal for high-end audio systems.

## New Twisted Flare Port Produces Clear and Tight Bass

The all-new Twisted Flare Port takes advantage of extensive subwoofer development experience. The flared, gently twisting shape diffuses the vortex of air generated around the edge of the port, creating a smooth flow of air. This reduces extraneous



noise not present in the original input signal and provides clear, accurate low frequency reproduction. From special effect sounds in movies to the atmosphere of a live venue, you hear bass that is clear, tight and realistic.

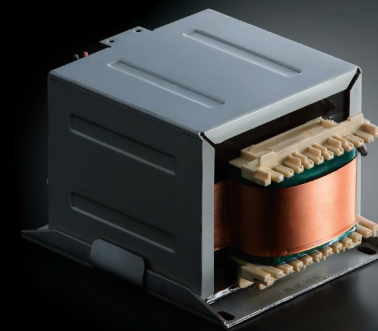
## Digital Power Amplifier Achieves 1kW Output Power with a High Current MOS-FET Discrete Output Stage

The 1kW output power digital amplifier employs a drive stage using the all-new Yamaha digital amplifier IC and a high current MOS-FET discrete push-pull output stage. Careful sound quality tuning included the use of a luxurious triple-wound Litz wire high-capacity output coil and capacitors especially designed for audio, resulting in optimum high quality and high power, for use in theater or HiFi environments.



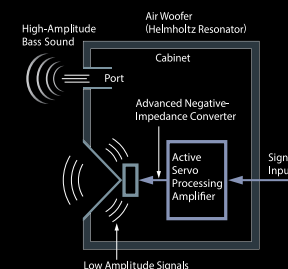
## Huge Analogue Power Supply with High Capacity Output Transformer and Large Block Electrolytic Capacitors

The huge power supply for the built-in power amplifier has a massive 10.2kg (22.5 lbs) high capacity power transformer and two large 160V 4,700μF block electrolytic capacitors, making it capable of sustaining the 1kW power output. Yamaha used a conventional pure analog power supply to achieve superior response and musicality in the very low bass range.



## Convenient Size, Majestic Bass Reproduction. Yamaha's Unique A-YSTII Technology

Developed by Yamaha, the Advanced YST II (Yamaha Active Servo Technology II) combines negative-impedance and constant-current principles to drive the speaker cone with even tighter control than the previous version. Using Advanced Negative Impedance Converter (ANIC) circuits, this system dynamically optimises effective speaker impedance to maintain excellent linearity. This means more stable and accurate low range response, not to mention higher sound quality.





# NS-SW1000

Advanced YST and Twisted Flare Port Subwoofer

NEW PRODUCT BULLETIN



## All-New 30cm (12") Woofer Unit with Double Magnet and Double Damper

To achieve long-stroke drive with its superior linearity, the NS-SW1000 uses a 30cm (12") woofer unit with a strong, flexible drive system employing double layer large diameter ferrite magnets and a double damper with an air vent. The frame is high strength aluminium diecast to suppress unwanted resonance even at high volumes, making it possible to reproduce delicate tonal nuances.



## Optimally Designed Semi-Pressed Paper Cone with Kevlar Fibers

The specially designed woofer diaphragm is semi-pressed paper incorporating Kevlar fibers for high strength and optimal internal losses. It was developed for this model in pursuit of the ideal characteristics for a subwoofer.

## Choice of Three Cabinet Finishes Including Piano Finish

The NS-SW1000 cabinet exterior is available in your choice of black piano, white piano, or black embossed laminate. The piano finish uses the same material as Yamaha grand pianos, and in the last production step each unit is carefully polished, giving a good gloss for your livingroom or listening room. The embossed laminate is ideal for

home theatre with a subdued gloss that reduces reflection onto your viewing screen and a scratch resistance surface.

## High-Grade Cabinet Design Anticipates Use with High-End HiFi Equipment

The aluminium front panel with its hairline finish gives an accent to the front panel, and the large aluminium volume control knob, power switch and other controls are spread over the front panel to make a high-grade, comfortable design that is a good match for high-end HiFi Subwoofer.



## Auto Standby

If a no-signal condition persists for more than 8 minutes, the system power turns off and a standby condition is entered. Recent energy-saving technology keeps power consumption in standby mode to under 0.3W.

## System Control

A System Control connector is provided, and by connecting it to the System Control connector on a Yamaha AV amplifier or integrated amplifier, the power can be set to be automatically turned on and off with the connected amplifier. A 5m (16 ft) cable is provided.

## Phase Switchover

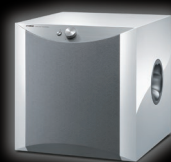
On the rear panel a phase switchover selector is provided that selects either normal or reverse woofer output phase. You can set the best phase according to your listening environment while doing comparative listening tests.

## B.A.S.S. mode

By using the rear panel B.A.S.S. switch, you can set the unit's tonal characteristics to Music or Movie. Choose the optimum setting depending on the programme source or equipment configuration.



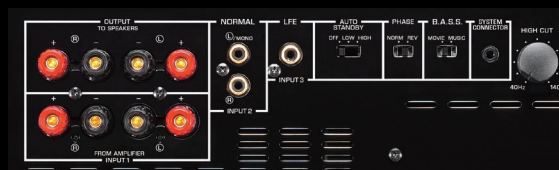
Piano Black



Piano White



Black



NS-SW1000	
Output Power (100Hz, 4Ω10%T.H.D)	1,000 W
Frequency Response	18-160 Hz
Driver	30 cm (12") cone
Standby Power Consumption	0.3 W
Dimensions (W x H x D)	443 x 463 x 522 mm, 17-1/2" x 18-1/4" x 20-1/2"
Weight	42.6 kg, 93.9 lbs.