



IN ADMIRATION OF MUSIC



**DALI FAZON** Series



The DALI FAZON series is proof positive that, when done right, form and function can be allies instead of mortal enemies. The fluid, organic lines of the die-cast aluminium enclosures are a perfect example.

The distinctive styling and curved forms are much more than artistic whims. They also provide enhanced structural integrity, reduced vibration and no parallel surfaces, all key elements in the pure, musical tone of these masterful loudspeakers.

FAZON reaps the full benefits of DALI's long-standing collaboration with fresh, creative Scandinavian design talent, as well as decades of experience at the cutting edge of technological innovation. DALI FAZON combines advanced driver and materials technologies developed for the acclaimed DALI IKON and MENTOR series.

New technology and a courageous mindset are keynotes in creating a loudspeaker series that truly unifies high performance audio with modern design in one brilliant package. While the renowned DALI sound principles always preserve the rich nuances of any kind of great music - from ABBA to Zappa, from classical to rock, electronica and jazz. Watch your favourite movies and TV series or just the daily news, easy to hear and understand even at low sound levels.

Welcome to a new generation of high definition quality loudspeakers designed to deliver authentic, natural sound in an elegantly styled form.

Enjoy!



IN ADMIRATION OF MUSIC



## DALI FAZON F5

FAZON F5 is nothing like the vast majority of loudspeakers on the market. It is a true fusion of craftsmanship, performance, and aesthetics - a loudspeaker for a new era.

The oversized dome tweeter (28 mm/1.1") integrates perfectly with dual 5" mid/woofers to allow dynamics and even the finest musical details to flourish. The visual appearance is stunning and speaks for itself: stylish, daring, and built on a unique die-cast aluminium body to ensure extremely rigid construction and minimal reflections.

The Dual Layer Front Baffle - a sandwich construction with polymer sealant between the two layers, securely attached to the aluminium cabinet - ensures an acoustically inert environment for the drivers. Tweeter and enclosure are effectively isolated from bass vibrations for undistorted performance.

The rigid die-cast aluminium front plate is the strong base for the tweeter construction. This anchoring is important as the ultra-light dome diaphragm enables the tweeter to reproduce the fine micro-details in the most critical recordings.

FAZON F5 is the image of future loudspeaker design and performance, matching the varying moods and needs of your day. From sleepy radio listening in the morning, reflective music enjoyment in the afternoon to movies in the evening - or partying on a Saturday night.

To spell it out: FAZON F5 unites form and function, gets shape into sound and sound in good shape!



WHAT HI-FI?  
SOUND AND VISION



EISA  
AWARD  
Best  
Product  
2011-2012  
AUDIO DESIGN  
DALI FAZON F5



Visit the micro website dedicated to the FAZON F5: [www.fazonf5.com](http://www.fazonf5.com)



- **Terminals - Virtually Wireless** | Because of the exclusive terminals specially developed by DALI, you now have the option to conceal your loudspeaker cables in the floor. This flexible terminal system makes room for several solutions - including 100% concealment of the cables in your home.

- **Sturdy base** | The die-cast aluminium base provides a sturdy platform for the entire FAZON F5 speaker.
- And the integrated terminal housing accommodates a pair of spring-loaded terminals, able to handle speaker cable in excess of 10 mm<sup>2</sup>.





## DALI FAZON LCR

By combining appealing design, quality materials and excellence in driver and system development, inherited from the award-winning MENTOR and IKON series, DALI FAZON LCR reveals itself as a true hi-fi performance loudspeaker for on-wall or stand mounting in both stereo and multi-channel setups.

The die-cast aluminium cabinet made it is possible to create an asymmetrical shape with internal bracings. This simple, yet effective construction provides near total suppression of both acoustic and mechanical resonances in the cabinet structure.

The crossover is made with high quality audio grade components and mounted on the rear side of the Click 'n' Connect connector FAZON LCR, guaranteeing a short signal path.

With the unique integral Click 'n' Connect wall bracket, the speaker appears to float freely against the wall. The speaker can be positioned vertically or horizontally for flexible installation as a Left/Right or Centre speaker, hence the name FAZON LCR.

Like the FAZON F5, the LCR incorporates the "Dual Layer Front Baffle" construction to further enhance performance.

This versatile loudspeaker fits into any modern lifestyle, where high performance and a discrete appearance are high priorities.



■ **Click'n'Connect** | No cables, no connectors, no hassle – The wall bracket incorporates gold-plated 4 mm Click 'n' Connect pins for foolproof connectivity with correct signal polarity every time. This proprietary connector ensures optimal signal flow between amplifier and loudspeaker. The bracket is compatible with vertical or horizontal mounting.

■ **Neodymium Magnet System** | For a sculptural organic form with seamless integration of the FAZON LCR housing and the protective front grille, the grille is attached to the loudspeaker using an array of 20 neodymium magnets.







## DALI FAZON SAT

Developing a premium loudspeaker in the lifestyle segment has been a great challenge, since ultra-compact design and performance typically work against each other. However, the compact and attractive FAZON SAT offers a huge soundstage with bass reproduction that you wouldn't think possible judging by its size, proving that it is possible to build small, powerful loudspeakers with true hi-fi sound.

The compact FAZON SAT is a two-way design including a 4½" mid/woofer with wood fibre cone and an oversized 28mm/1.1" soft dome tweeter with a powerful neodymium magnet system. The drivers share the same technology platform as the drivers developed for the acclaimed MENTOR and IKON series.

The elegant and curved cabinet body is a combination of high gloss lacquered aluminium and composite material for the baffle. The surface of the baffle is treated with a rubbery coating for a smooth, elegant touch. The grille, which conceals and protects the drivers and the baffle, is held in place with magnets - allowing quick, easy removal with no visible signs of mounting pegs on the grille. The speakers are delivered with a handy table stand for easy placement on a TV table, bookshelf, etc.

It's small, it's stylish, it's what you need if you want to combine great sound with discrete presentation.



- **Twist 'n' Tilt** | Equipped with a 360° pivoting wall bracket, FAZON SAT offers a flexible and innovative "Twist 'n' Tilt" function. Whether mounted on the wall or on the table stand, you can angle the speaker precisely horizontally and vertically; tilt it up and down or swivel it to either side.

- **Grille** | The FAZON SAT grille conceals and protects the drivers and the baffle and is held in place with magnets - allowing quick, easy removal with no visible signs of mounting pegs on the grille. Simple and stylish.



## Recommended Subwoofers

For bass-heavy musical styles, for larger rooms or for no holds barred stereo or surround, your DALI FAZON loudspeakers can be partnered with a handsome, compact DALI subwoofer for extended deep bass weight and authority.

10



### DALI FAZON SUB 1

Following the trend of compact, stylish products delivering remarkable performance, the FAZON SUB 1 sets out to impress music and movie lovers.

Although small in size, the FAZON SUB 1 is among the highest performing ultra-compact subwoofers available. With dimensions of only 255 x 230 x 255 mm FAZON SUB 1 is the most compact subwoofer ever built by DALI.

With a careful balance between signal equalization and time response that allows well-defined and tight bass that follows the signal, FAZON SUB 1 offers musical and natural bass performance.

The FAZON SUB 1 integrates well with many smaller loudspeakers. Engineered for a perfect match with our FAZON SAT speakers. Will also complement FAZON LCR in 3.1 or even 5.1 systems.



### DALI SUB E-12 F

DALI SUB E-12 F marks a new stage of what is possible at this level of subwoofers!

Featuring a 12" woofer, this sub is capable of moving plenty of air with power and precision. The cone is made from pure aluminium for maximum stiffness and a becoming exterior.

The heart of this subwoofer is the 170W RMS Class D amplifier with highly linear response. Embracing a classic DALI trademark, it simply acts as a total low frequency extension of your AV system. The result is powerful, well-balanced bass reproduction and flawless integration with your speakers. In addition, the integrated limiter helps protect your subwoofer against overloading.

SUB E-12 F is the perfect match in an AV set-up that includes DALI FAZON F5.



### DALI SUB P-10 DDS

The latest addition to the range of DALI subwoofers sets out to impress – both in appearance and performance. Sporting an active down-firing 10" long-throw woofer coupled to two passive side-firing radiators, the DALI SUB P-10 DSS couples seamlessly to your speakers and the listening room.

Powered by a state-of-the-art 500W Class D amplifier, this sub will render even the loudest movie explosions with realistic punch. And if you want to listen to your favourite artist, the remote control allows you to toggle from movie to hi-fi setting of the built-in DSP circuit.

In a category of its own, the DALI SUB P-10 DSS is the no-compromise match for your FAZON F5 speakers, instantly optimisable for your choice of movies or music.

## DALI FAZON Stands

For installations where wall mounting (which we highly recommend) is not possible, DALI offers stylish matching table and floor stands.

### Table stand for FAZON LCR

(Left & Right)

H 28.0 x W 18.0 x D 18.4 cm | 2.0 kg/4.4 lb

Made in black satin steel finish.  
Combined height of stand and speaker: 42.5 cm



### Table stand for FAZON LCR

(Centre)

H 18.2 x W 18.0 x D 18.4 cm | 1.5 kg/3.3 lb

Made in black satin steel finish.  
Combined height of stand and speaker: 21.0 cm



### Floor stand for FAZON LCR

(Left & Right)

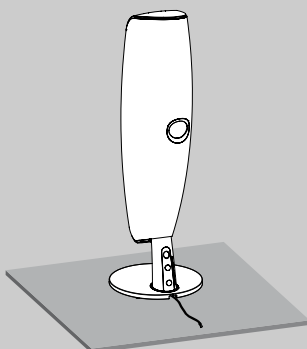
Base: H 4.0 x W 29.6 x D 38.0 cm | 5.0 kg/11.0 lb  
Tube: H 9v9.0 x W 9.0 x D 1.2 cm | 2.0 kg/7.8 lb

Combined height of stand and speaker: 112.5 cm  
Made with anodised aluminium riser and concealed cable channel. Base in black satin steel finish.

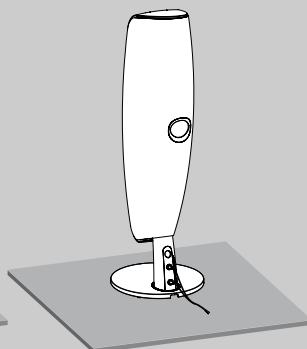


## FAZON F5 connection

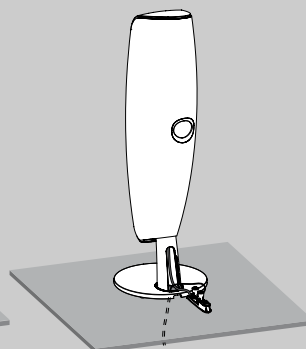
Run your speaker cable elegantly into the base of the speaker for a discreet appearance. Or allow the cable to enter the base from underneath the floor for a completely concealed solution. A very useful feature e.g., in connection with the construction of a new home or listening area.



**Option 1:**  
Cable inside the base, above the flooring



**Option 2:**  
Cable outside the base, above the flooring



**Option 3:**  
Cable inside the base, below the flooring

## FAZON Multi Channel Systems

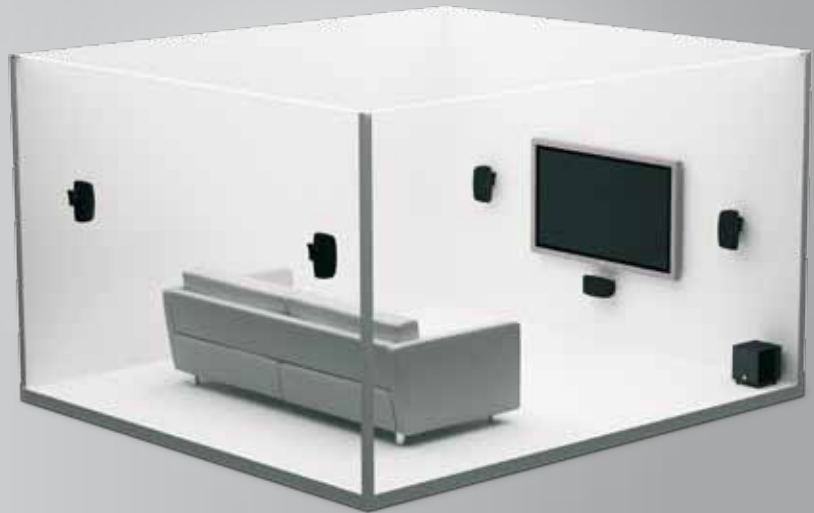
With DALI FAZON speakers and a range of subwoofers, you can compose the ideal system for any listening room, application as well as your personal preferences. Here are but a few examples, all compatible with 6.1 and 7.1 systems as well.

12

### FAZON SAT 5.1-3

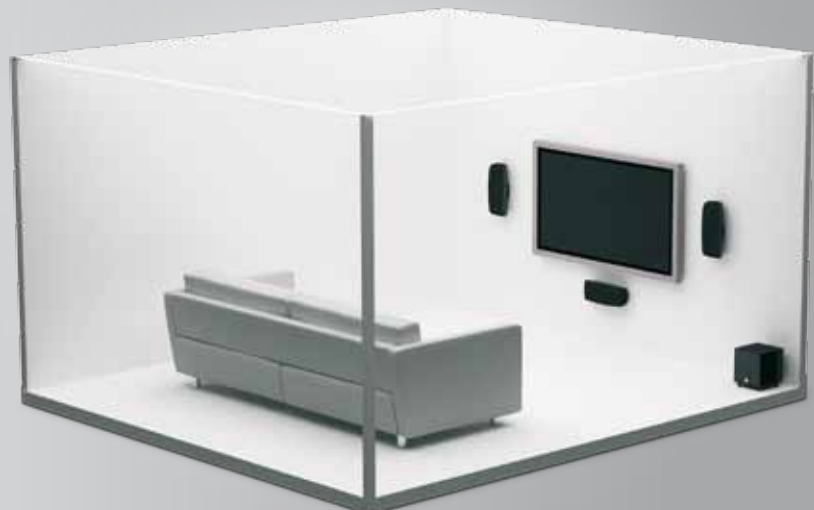
Awarded the highly acclaimed 'Best Style Package for 2011' by What HiFi, the most compact DALI speakers will not let you down. An aesthetically pleasing set-up consisting of 5 identical speakers, assisted by the SUB E-12 F. The FAZON SAT pleases eyes and ears alike.

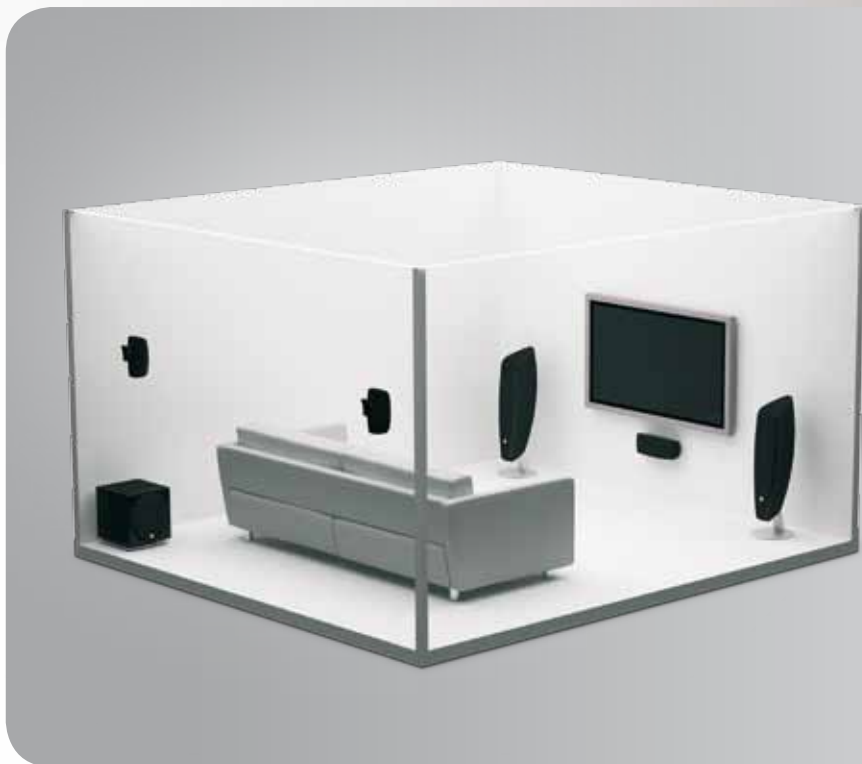
**WHAT HI-FI?**  
SOUND AND VISION  
**AWARDS 2011**  
SPEAKER PACKAGES  
BEST STYLE PACKAGE £1500-£2000  
DALI FAZON 3.1



### FAZON SAT 3.1

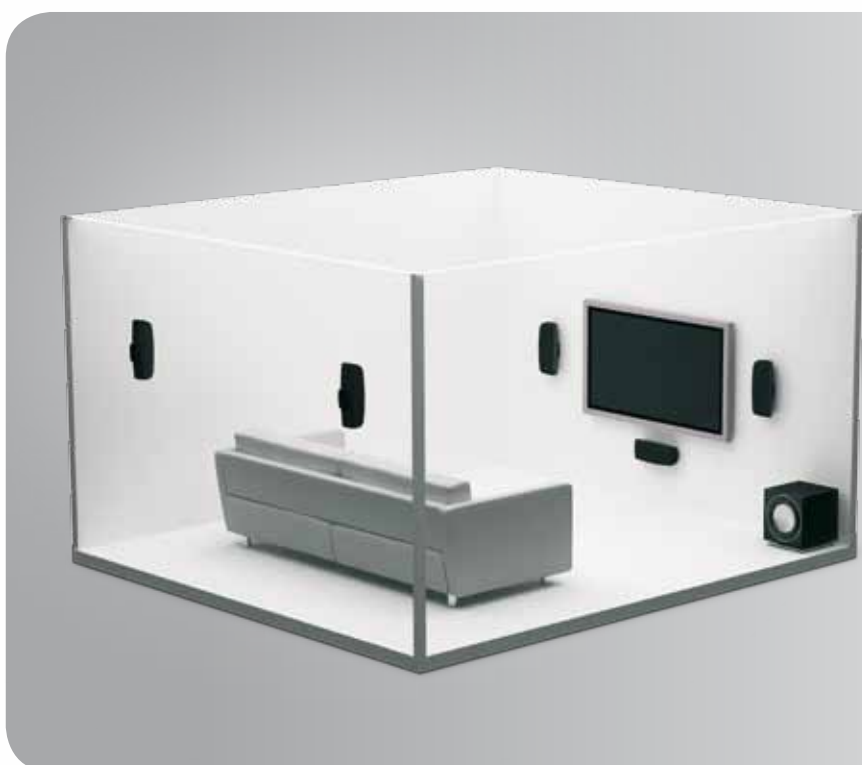
In some rooms it can be difficult to accommodate surround speakers or to run the necessary cables. An obvious solution may be to go for a 3.1 system, for instance three FAZON LCR and the FAZON SUB 1 as shown here.





### FAZON 5.1

For a complete surround experience – even in larger rooms – connect a pair of FAZON F5 as front speakers, the FAZON LCR as a centre speaker, and the SUB P-10 DSS for the lowest frequencies. In most rooms the FAZON SAT will easily live up to the task of rendering the surround effects



### FAZON LCR 5.1

Mount four FAZON LCR vertically on the wall as front and surround speakers and mount the fifth horizontally below your screen. Connect the SUB E-12 F. You now have a visually stunning 5.1 setup which in quality will compete with much larger, conventionally styled speakers.

## Aluminium Cabinets

The backbone of the FAZON series is a sculptured, die-cast aluminum cabinet structure.

Aluminum provides a much higher internal volume within the limited sized cabinet, while still maintaining a rigid and stiff environment for the drivers.

Assuming the same advanced shape could be formed in MDF in an average thickness of 19 mm - quite typical for high quality loudspeakers of this size - approximately 30% of the internal volume would be lost due to the thickness of the material.



Because of the sophisticated curved shape, the FAZON series has no parallel sides, which prevents standing waves from arising.

## In Admiration of Music

Creating superior sound has always been the cornerstone in our mission to deliver the best music experience possible. Exploring, testing and developing new ways to reproduce sound using the latest technology is what we live for at DALI.

Our skilled “sound creators” are driven by raw enthusiasm and follow the DALI sound philosophy in all aspects when creating a DALI loudspeaker:

**Holographic Sound Imaging** | DALI’s time coherence and low-loss technologies create a transparent, holographic, three-dimensional soundstage.

**Amplifier Optimized** | DALI’s linear impedance design ensures an audible reduction of amplifier instability and coloration.

**Time Coherence** | The unique DALI drivers, optimised cabinets and carefully tuned crossovers ensure optimum time coherence in the reproduced sound.

**Wide Dispersion** | DALI designs drivers and crossovers to produce wide, even sound dispersion, resulting in outstanding room integration, a larger sweet spot and a wider listening area.

**Low Resonance Cabinets** | Specially designed cabinets reduce resonances and coloration of the sound for natural, realistic sound.

**Hand Crafted** | Hand crafted from the fitting of the cabinet to final electroacoustic testing, each and every speaker is personally approved and signed by the person who assembled it.



DALI headquarters, Denmark

*Since 1983, DALI – Danish Audiophile Loudspeaker Industries – has designed, developed and produced high performance Hi-Fi loudspeakers.*

*With a reputation for quality, reliability and integrity, DALI is driven by a raw passion for music and a deep respect for the artists who interpret it. The development and refinement of new technologies to increase the realism of the home entertainment experience is the main objective in our quest to create what we believe to be the best loudspeakers in the world.*

[ DALI FAZON SAT | White finish ]



IN ADMIRATION OF MUSIC

### FAZON Series features:

- Die-cast aluminium
- Acoustically optimised with no parallel sides
- Neodymium Magnet System
- Dual Layer Front Baffle
- Virtually wireless terminals
- Click 'n' Connect system
- Twist 'n' Tilt function
- High Gloss Lacquer Finish



	FAZON F5	FAZON LCR	FAZON SAT	SUB E-12 F	FAZON SUB 1
Frequency Range [+/- 3] dB [Hz]	49 - 23,000	78 - 25,000	86 - 25,000	28 - 190	37 - 200
Sensitivity [2.83V/1m] [dB]	87.5	89.0	86.0	-	-
Nominal Impedance [ohms]	6	6	6	-	-
Input Impedance (ohms)	-	-	-	25k	22k
Max. Power Consumption (Watt)	-	-	-	250	195
Max. Amplifier Power Output (Watt RMS)	-	-	-	220	150
Cont. IEC Power Output (Watt RMS)	-	-	-	170	90
Maximum SPL [dB]	109	107	104	112	103
Crossover Frequencies [Hz]	800 / 3,000	3,000	1,800	40 - 120	50 - 150
Crossover Principle	2½-way	2-way	2-way	-	-
High Frequency Driver	28 mm soft dome	28 mm soft dome	28 mm soft dome	-	-
Low Frequency/midrange Driver(s)	2 x 5"	2 x 4½"	1 x 4½"	1 x 12" Long Stroke	1 x 6½"
Enclosure Type	Bass Reflex	Closed	Closed	Bass reflex	Closed
Bass Reflex Tuning Frequency [Hz]	47.0	-	-	36.0	-
Connection Input(s)	Single wire	Single wire	Single wire	RCA Stereo (low pass filtered) RCA LFE (Mono)	RCA Stereo (low pass filtered) RCA LFE (Mono)
Recommended Placement	Floor	On wall, above/below TV	Stand, Shelf, On wall, Above/below TV	Floor, near wall or corner	Floor, in corner
Magnetic Shielding	No	No	No	No	No
Dimensions (H x W x D) [mm]	915 x 281 x 323	385 x 157 x 117	255.5 x 138 x 87 Including table stand: 287 x 146 x 172	370 x 340 x 380	255 x 230 x 255
Dimensions (H x W x D) [inches]	38.5 x 8.1 x 12.3	15.2 x 6.2 x 3.9	9.8 x 5.4 x 3.4 Including table stand: 11.2 x 5.7 x 6.7	14.6 x 13.4 x 15.0	10.0 x 9.1 x 10.0
Weight [kg]	13.9	3.5	2.4	14.7	7.5
Available Finish	Black High Gloss, White High Gloss, Red High Gloss	Black High Gloss, White High Gloss	Black High Gloss, White High Gloss	Black, White, Light Walnut	Black High Gloss, White High Gloss
Accessories incl.	Manual, Micro Fibre Cloth	Manual, Instal. Templates, mounting bracket, Theft Prevention Tool	Manual, Assembly tools, Table stand, Wall bracket	Manual, Mains cable, M6 Spikes	Manual, Power Cord
Optional accessories	Ice colour grille	Ice colour grille	Ice colour grille		

All technical specifications are subject to changes without notice