

SQ1 Floor Stand



*Speakers are not included

Platform for performance

The SQ1 Floor Stand provides the optimal stable platform for the Q Series bookshelf speakers to perform. With integrated cable management, cables remain concealed and organised, maintaining a clean and uncluttered appearance. The pillar can be loaded with inert filler to further improve stability and always ensure an unfaltering speaker performance.

Engineered for acoustic excellence

The SQ1 Floor Stand dimensions have been engineered by KEF's UK engineering team to lift the speakers to the ideal height for driver positioning, enhancing the overall listening experience.

Visual harmony

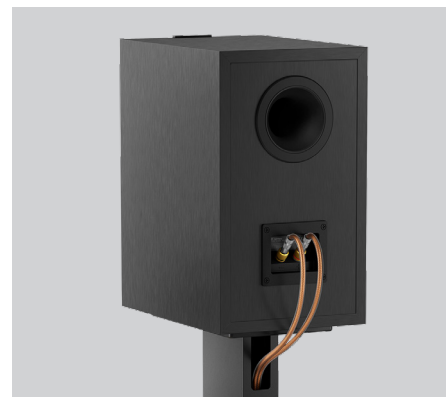
The SQ1 Floor Stand is designed to visually complement the speakers, featuring a rectilinear design that blends with the speaker's aesthetics. Available in two colours, Slate Grey and Mineral White, the stands not only match the speakers but will fit elegantly into any space.

Summary of features

- Designed for Q1 Meta, Q3 Meta and Q Concerto Meta
- Integrated speaker cable management
- Aluminium construction provides rigidity and stability
- Fillable pillar for the addition of inert filler for further stability
- Adjustable rubber feet for easy levelling
- Available in 2 colours – Mineral White and Slate Grey

Specifications

Dimensions with plinth (H x W x D)	615 x 260 x 350 mm (24.2 x 10.2 x 13.8 in.)
Weight	3.25 kg (7.2 lb) per stand
Unit measurement	Pair
Fillable Volume	2 litres per stand



Slate Grey



Mineral White

*For the best possible performance, it is recommended to load inert filler with the SQ1 Floor Stand.

Visit: [KEF.com](https://www.kef.com) for more about KEF and its products.

KEF reserves the right, in line with continuing research and development, to amend or change specifications. E&OE.

09. 2024 | SQ1 Floor Stand

