

Pioneer

SBX-B70D

Network Speaker Base

Discover the benefits of registering your product online at <http://www.pioneer.co.uk> (or <http://www.pioneer.eu>)

Operating Instructions

CAUTION

TO PREVENT THE RISK OF ELECTRIC SHOCK, DO NOT REMOVE COVER (OR BACK). NO USER-SERVICEABLE PARTS INSIDE. REFER SERVICING TO QUALIFIED SERVICE PERSONNEL.

D3-4-2-1-1_B1_En

WARNING

This equipment is not waterproof. To prevent a fire or shock hazard, do not place any container filled with liquid near this equipment (such as a vase or flower pot) or expose it to dripping, splashing, rain or moisture.

D3-4-2-1-3_A1_En

WARNING

To prevent a fire hazard, do not place any naked flame sources (such as a lighted candle) on the equipment.

D3-4-2-1-7a_A1_En

VENTILATION CAUTION

When installing the unit, leave space of at least 10 cm at the sides and rear. Furthermore, to facilitate good heat dissipation, make sure there is a little distance between the other devices. When installing the unit in a rack or the like, leave space of at least 10 cm at the top, rear, and sides. Internal heat buildup may cause a fire.

WARNING

Slots and openings in the cabinet are provided for ventilation to ensure reliable operation of the product, and to protect it from overheating. To prevent fire hazard, the openings should never be blocked or covered with items (such as newspapers, table-cloths, curtains) or by operating the equipment on thick carpet or a bed.

D3-4-2-1-7b*_A1_En

WARNING

Store small parts out of the reach of children and infants. If accidentally swallowed, contact a doctor immediately.

D41-6-4_A1_En


Operating Environment

Operating environment temperature and humidity: +5 °C to +35 °C (+41 °F to +95 °F); less than 85 %RH (cooling vents not blocked)

Do not install this unit in a poorly ventilated area, or in locations exposed to high humidity or direct sunlight (or strong artificial light)

D3-4-2-1-7c*_A1_En

CAUTION

The  switch on this unit will not completely shut off all power from the AC outlet. Since the power cord serves as the main disconnect device for the unit, you will need to unplug it from the AC outlet to shut down all power. Therefore, make sure the unit has been installed so that the power cord can be easily unplugged from the AC outlet in case of an accident. To avoid fire hazard, the power cord should also be unplugged from the AC outlet when left unused for a long period of time (for example, when on vacation).

D3-4-2-2a*_A1_En

This product is for general household purposes. Any failure due to use for other than household purposes (such as long-term use for business purposes in a restaurant or use in a car or ship) and which requires repair will be charged for even during the warranty period.

K041_A1_En

POWER-CORD CAUTION

Handle the power cord by the plug. Do not pull out the plug by tugging the cord and never touch the power cord when your hands are wet as this could cause a short circuit or electric shock. Do not place the unit, a piece of furniture, etc., on the power cord, or pinch the cord. Never make a knot in the cord or tie it with other cords. The power cords should be routed such that they are not likely to be stepped on. A damaged power cord can cause a fire or give you an electrical shock. Check the power cord once in a while. When you find it damaged, ask your nearest PIONEER authorized service center or your dealer for a replacement.

S002*_A1_En

Information for users on collection and disposal of old equipment and used batteries

(Symbol for equipment)



(Symbol examples for batteries)



These symbols on the products, packaging, and/or accompanying documents mean that used electrical and electronic products and batteries should not be mixed with general household waste.

For proper treatment, recovery and recycling of old products and used batteries, please take them to applicable collection points in accordance with your national legislation.

By disposing of these products and batteries correctly, you will help to save valuable resources and prevent any potential negative effects on human health and the environment which could otherwise arise from inappropriate waste handling.

For more information about collection and recycling of old products and batteries, please contact your local municipality, your waste disposal service or the point of sale where you purchased the items.

These symbols are only valid in the European Union.

For countries outside the European Union:

If you wish to discard these items, please contact your local authorities or dealer and ask for the correct method of disposal.

K058a_A1_En

Radio wave caution

This unit uses a 2.4 GHz radio wave frequency, which is a band used by other wireless systems (Microwave ovens and Cordless phones, etc.). In this event noise appears in your television image, there is the possibility this unit (including products supported by this unit) is causing signal interference with the antenna input connector of your television, video, satellite tuner, etc. In this event, increase the distance between the antenna input connector and this unit (including products supported by this unit).

- Pioneer is not responsible for any malfunction of the compatible Pioneer product due to communication error/malfunctions associated with your network connection and/or your connected equipment. Please contact your Internet service provider or network device manufacturer.
- A separate contract with/payment to an Internet service provider is required to use the Internet.

Thank you for buying this product.

Please read through these operating instructions so that you will know how to operate your model properly. After you have finished reading the instructions, put them in a safe place for future reference.

Contents

01 Before you start

Supplied accessories	6
Loading the batteries	6
Operating range of remote control	6

02 Part names and functions

Rear panel	7
Remote control	8
Front panel	9

03 Installing and connecting the unit

Installing the unit	10
---------------------	----

04 Getting started

To turn the power on	14
Setting the clock	14
General control	14
Input function	14
Display brightness control	14
Volume auto setting	14
Volume control	14
Subwoofer volume control	14
Muting	14
Sound controls	15
Surround mode	15
ALC (Auto Level Control) mode	15
Emphasizes low range (P.BASS)	15
Bass/treble control	15
Setting the wake-up timer	15
Calling the wake-up timer	16
Cancelling the wake-up timer	16
Using the wake-up timer	16
Using the sleep timer	16

05 Basic operation

Outputting the sound of a device connected to the unit	17
Linking power for the unit and a TV	17

06 iPod/iPhone playback

Confirming what iPod/iPhone models are supported	18
--	----

07 USB playback

Playing USB storage devices	19
Repeat play	19
Random play	19
Switch the display contents	19

08 Connect network

Setting with a special application (Start-up Navi)	20
Setting network connection	21
A: Connecting with a LAN cable (wired LAN)	22
B: Setting this unit with iOS equipment (iOS version 5.0 or later)	23
C: Perform this unit's settings using the iOS equipment (iOS version 7.1 or later)	24
D: WPS connection settings	25

E: Setting the wireless LAN setting for this unit from the web browser of a computer that supports a wired LAN connection	26
F: Setting the wireless LAN setting for this unit from the web browser of a computer that supports a wireless LAN connection	27
G: Directly connecting this unit with a smart phone by wireless (Wireless Direct)	28
Checking the Network Information	29

09 Listening to Spotify audio streaming playback

About the Spotify audio streaming playback function	30
Installing ControlApp	31
Using ControlApp	31

10 Music server

Introduction	32
Playing music on Music server	32
About playable DLNA network devices	32
Playing back your favorite songs	32

11 AirPlay

Using AirPlay on iPod touch, iPhone, iPad and iTunes	33
Playing audio files stored on computers or other components	33
Connecting to the LAN network	33
Using AirPlay to enjoy music	33
Operating AirPlay from an iPod/iPhone/iPad	33

12 Using the tuner

Listening to the radio broadcasts	35
Tuning	35
Saving station presets	35
To recall a memorized station	36
To scan the preset stations	36
To erase entire preset memory	36
Listening to the DAB+	36
About DAB+ (Digital Audio Broadcasting)	36
Auto Scan	36
Selecting a station in the station list	36
Manual tune	37
Changing the information display	37
Memorising a station	37
DAB Frequency table (BAND III)	37
Using the Radio Data System (RDS)	38
An introduction to RDS	38
Searching for RDS programs	38
Information provided by RDS	38
Using the Auto Station Program Memory (ASPM)	39
Notes for RDS operation	39

13 Bluetooth® Audio playback

Music playback using <i>Bluetooth</i> wireless technology	40
Remote control operation	40
Pairing with the unit (Initial registration)	40
Listen to music on the unit from a <i>Bluetooth</i> capable device	41
BT STANDBY	41
Switch the BT AUDIO function on or off	41

14 PHASE CONTROL technology

No PHASE CONTROL technology	42
With PHASE CONTROL technology	42

15 Home menu

Automatically switch power to standby mode (Auto Power Off)	43
Setting Network Standby mode	43
Check network settings	43
Check software version	43
Software Update	43
Firmware Update using Web browser	44

16 Setting the remote to control other components

Recall signal from the remote control of another device to the remote control of this unit	46
Delete a preset code	46
Reset all preset codes	46
Control of other devices	47

17 Troubleshooting and other information

Troubleshooting	48
About network playback	53
Windows Media Player	53
DLNA	53
Content playable over a network	53
Disclaimer for Third Party Content	53
About playback behavior over a network	53
Authorizing this unit	54
aacPlus	54
FLAC	54
Radio wave caution	55
Scope of operation	55
Radio wave reflections	55
Precautions regarding connections to products supported by this unit	55
Supported audio file formats	56
About Wi-Fi®	58
About iPod/iPhone/iPad	58
Apple Lossless Audio Codec	58
Dolby Digital	58
DTS	58
About Spotify	58
Specifications	59

18 Preset code list

TV	60
DVD	63
BD	64

Chapter 1:

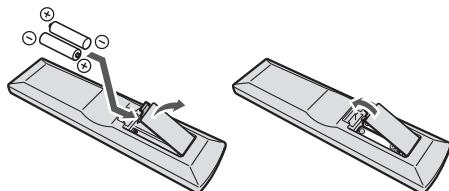
Before you start

Supplied accessories

- Remote control x 1
- AAA size IEC R03 dry cell batteries x 2
- Optical digital audio cable x 1 (1.5 m)
- Power cord
- DAB/FM wire antenna
- Warranty
- Operating Instructions (this manual)

Loading the batteries

The batteries included with the unit are to check initial operations; they may not last over a long period. We recommend using alkaline batteries that have a longer life.



⚠ CAUTION

- Incorrect use of batteries may result in such hazards as leakage and bursting. Observe the following precautions:
 - Never use new and old batteries together.
 - Insert the plus and minus sides of the batteries properly according to the marks in the battery case.
 - Batteries with the same shape may have different voltages. Do not use different batteries together.
 - When disposing of used the batteries, please comply with governmental regulations or environmental public institution's rules that apply in your country/area.
 - When inserting the batteries, make sure not to damage the springs on the battery's (-) terminals. This can cause batteries to leak or overheat.

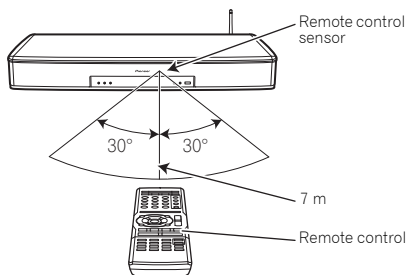
⚠ WARNING

- Do not use or store batteries in direct sunlight or other excessively hot place, such as inside a car or near a heater. This can cause batteries to leak, overheat, explode or catch fire. It can also reduce the life or performance of batteries.

Operating range of remote control

The remote control may not work properly if:

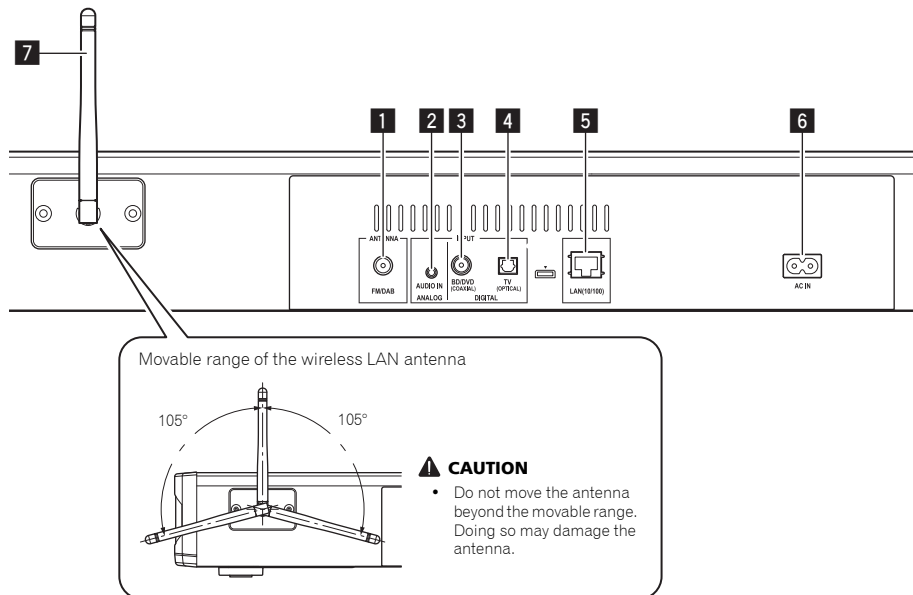
- There are obstacles between the remote control and the unit's remote sensor.
- Direct sunlight or fluorescent light is shining onto the remote sensor.
- The unit is located near a device that is emitting infrared rays.
- The unit is operated simultaneously with another infrared remote control unit.



Chapter 2:

Part names and functions

Rear panel



1 DAB/FM antenna socket

Connect provided DAB/FM wire antenna here (page 11).

2 Analog audio input terminal (3.5-mm stereo mini jack)

Connect a TV, portable audio player, or other device with an analog audio output (page 11).

3 Coaxial digital audio input terminal

Connect a BD or DVD player or other device with a coaxial digital audio output (page 11).

4 Optical digital audio input terminal

Connect a TV or other device with an optical digital audio output (page 11).

5 LAN (10/100) connector

Connect this unit to the router using a LAN cable (page 12).

6 AC IN terminal

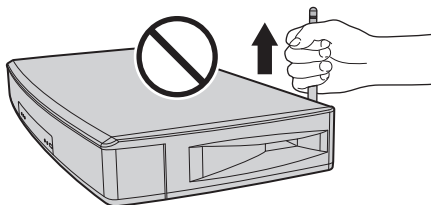
Be sure to connect this last.

7 Wireless LAN antenna

Receives signals from wireless devices.

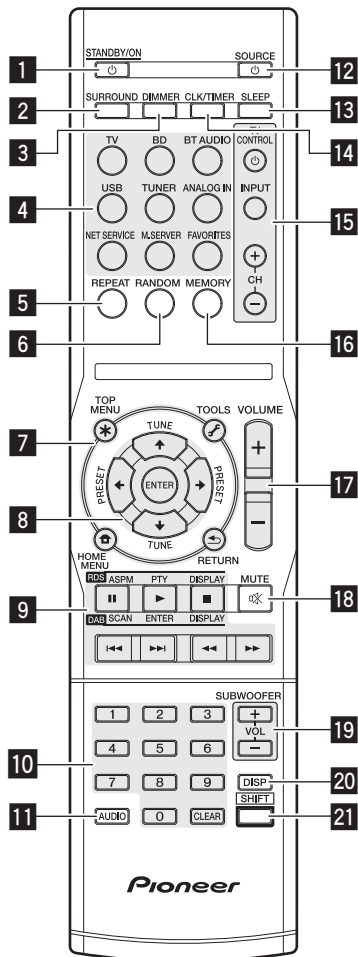
Note

- This is not an DAB/FM antenna.



Do not lift this device by holding the wireless LAN antenna, since damage or personal injury may result.

Remote control



1 STANDBY/ON

Turns the power of the unit on/off (standby mode) (page 14).

2 SURROUND

Switches surround mode (page 15).

3 DIMMER

Changes the brightness of the indicators on the front panel of the unit in four steps (page 14).

4 Input selection buttons

Switches the input of the unit (page 14).

5 REPEAT

Press to change the repeat play setting.

6 RANDOM

Randomize order of track playback.

7 Source control buttons

TOP MENU

Displays the disc "top" menu of a BD/DVD.

HOME MENU

Display the Home Menu and perform various settings for the unit.

TOOLS

Use to set sound quality.

RETURN

Go back one operation.

8 (TUNE , PRESET) ENTER

Use the arrow buttons when setting up your surround sound system. Also used to control BD/DVD menus/options.

Use **TUNE** can be used to find radio frequencies and **PRESET** can be used to select preset radio stations (page 35).

9 Source device operation buttons

Operates other devices or each input (TUNER, etc.).

- See page 38 for details on RDS.
- See page 36 for details on DAB.

10 Number buttons

Use the number buttons to directly select a radio frequency or the tracks on a BD/DVD, etc.

11 AUDIO

Switch the tuner between STEREO/MONO (page 35).

12 SOURCE

Turn the power of a TV or BD/DVD player connected to the unit on/off (page 46).

13 SLEEP

Press to change the amount of time before the unit switches into standby (10 min, 20 min, 30 min, 60 min, 90 min, 120 min, 150 min, 180 min, OFF). You can check the remaining sleep time at any time by pressing **SLEEP** once.

14 CLK/TIMER

Use to set the clock and wake-up timer functions (pages 14 and 15).

15 TV CONTROL buttons

These buttons can be used to control TVs (page 46).



Use to turn on/off the power of the TV.

INPUT

Use to select the TV input signal.

CH +/-

Use to select channels.

16 MEMORY

Use when presetting the stations for registration (pages 35 and 37).

17 VOLUME

Adjusts the overall volume including the subwoofer volume (page 14).

18 MUTE

Temporarily mutes the sound. Press again to restore the original volume (page 14).

19 SUBWOOFER VOL

Adjusts the subwoofer (bass sound) volume.

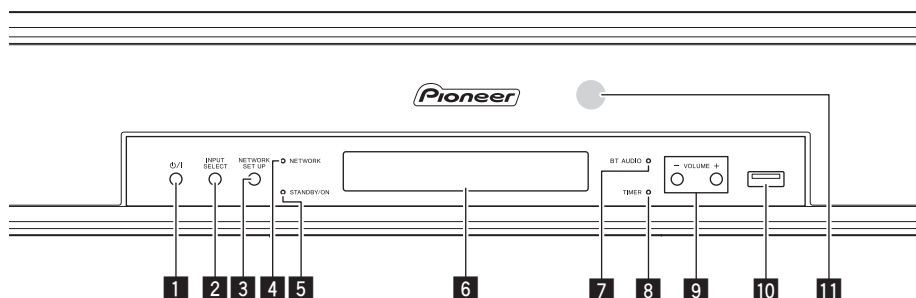
20 DISP

Each press switches the information displayed on the display. Information for each source is displayed.

21 SHIFT

After switching to TV or BD player input, you can press the **TV** or **BD** button and the **SHIFT** button together to control the TV or BD/DVD player (page 46).

Front panel



1 /I

Turns the power of the unit on/off (standby mode) (page 14).

2 INPUT SELECT

Switches the input (page 14).

3 NETWORK SET UP

Use for network functions and other settings.

4 NETWORK indicator

When the network status changes, this indicator lights. The indicator's color changes as noted below.

Lit white: good connection

Flashes red: connection failure

5 STANDBY/ON indicator

Lit when the power is on. The indicator's color changes as noted below.

Lit blue: power on

Lit red: network standby

Off: standby

6 Display

7 BT AUDIO indicator

Lit to display the status of connection with a *Bluetooth* capable device. The indicator's color changes as noted below.

Lit white: connected to a *Bluetooth* capable device

Flashes white: pairing mode

Off: not connected to a *Bluetooth* capable device, or not in pairing mode

8 TIMER indicator

Lit red: wake-up timer is set (power off)

Off: wake-up time is not set, or power is on

9 VOLUME +/-

Adjusts the volume (page 14).

10 USB terminal

Use to connect your USB mass storage device or Apple iPod/iPhone as an audio source (page 19).

11 Remote control sensor

Receives the signals from the remote control.

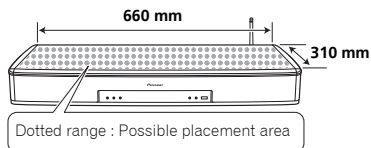
Chapter 3:

Installing and connecting the unit

Before connecting the unit or changing the connections, be sure to turn off the power and disconnect the power cord from the outlet. Also, make sure you have finished connecting all cables before connecting the power cord to the wall outlet.

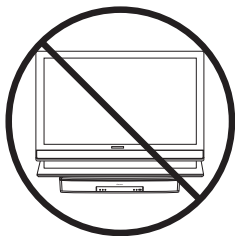
Installing the unit

If you are placing the unit directly under a TV, only place a TV of **40 kg** or less within the allowable placement area.



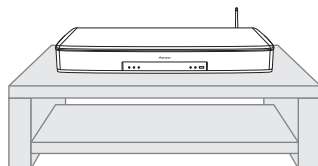
CAUTION

- Do not place a TV stand on top that is larger than the possible placement area.



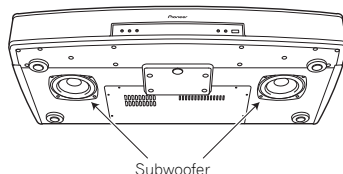
- Do not install the unit in an unstable place such as on an unsteady stand or tilted surface. The unit may fall or tip over, resulting in injury.
- The unit is not magnetically shielded and so should be used away from a cathode ray tube (CRT) TV or monitor. Also, do not place devices that are easily influenced by magnetism (magnetic cards, watches, video tapes, etc.) near the unit.
- Do not attach this unit to the wall or ceiling. It may fall off and cause injury.

1 Place the unit.



CAUTION

- There are subwoofers located on the bottom of the unit. Make sure that there is nothing between the unit and the surface it is being placed on.

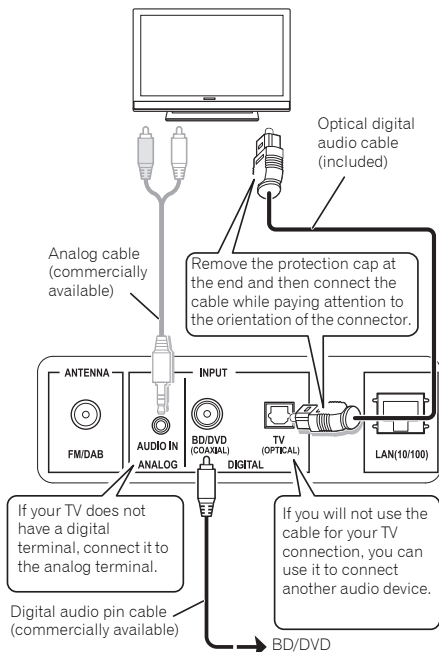


- Place the unit so that it does not extend out over the TV rack, shelf etc.



2 Wire the unit.

In order to make the wiring process as easy as possible, complete all wiring prior to placing the TV on top of the unit.

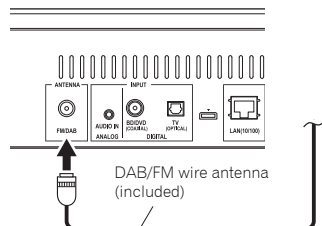


Note

- Some connected devices (TV and set top box etc.) have settings for the digital audio output. For details, see the operating instructions for the specific playback device.
- Digital audio input (COAXIAL, OPTICAL) supports input signals with sampling frequencies of 32 kHz, 44.1 kHz, 48 kHz, 88.2 kHz, and 96 kHz.

Connecting antenna

Connect the DAB/FM wire antenna into the DAB/FM antenna socket.

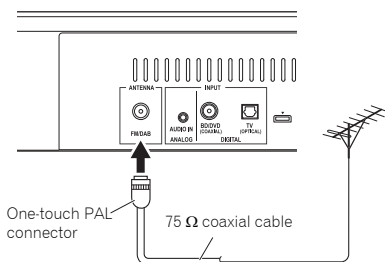


For best results, extend the DAB/FM antenna fully and fix to a wall or door frame. Don't drape loosely or leave coiled up.

Using external antennas

To improve DAB/FM reception and sound quality

Use a PAL connector (not supplied) to connect an external DAB/FM antenna.



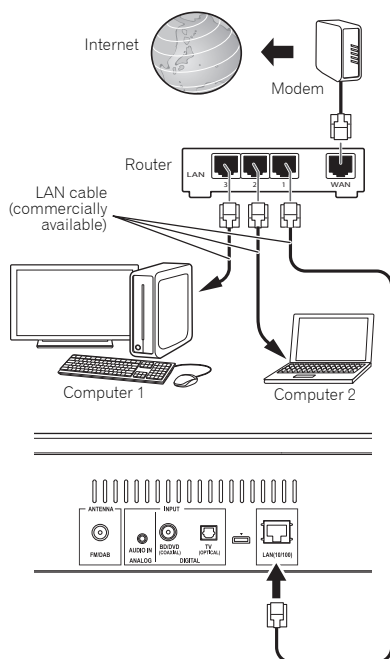
Connecting to the network through the LAN interface or WLAN antenna

By connecting this unit to the network via the LAN interface, you can play back audio files stored on components on the network, including your computer, and listen to Internet Radio stations.

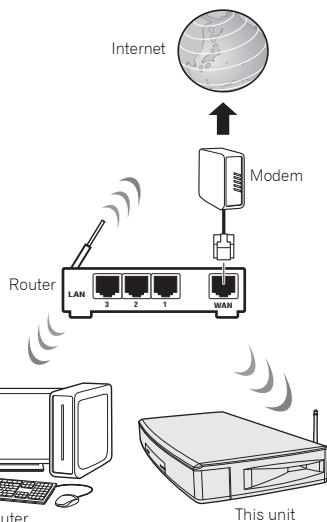
Connect the LAN terminal on this unit to the LAN terminal on your router (with or without the built-in DHCP server function) with a straight LAN cable (CAT 5 or higher). Also wireless connection to the network is possible.

Turn on the DHCP server function of your router. If your router does not have a built-in DHCP server function, you have to set up the network manually. For details, see page 21.

Connecting using LAN cable



Connecting using wireless LAN



3 Place the TV on top of the unit, and then wire the TV and other devices.

To enable hearing of the TV audio with the unit, connect the supplied optical digital audio cable.

For a TV that only has an analog audio output terminal, connect the audio output of the TV and the analog terminal of the unit with a commercially available audio cable.

4 Place the TV in its final position.

CAUTION

- Pioneer is not responsible for any accidents or damage that result from improper installation/mounting, incorrect use, modification, disaster, etc.
- Place the TV in the center of the unit.



- Place the TV so that its stand does not stick out over the unit.



- Refer to the operating instructions for your TV for methods to prevent the TV from tipping over or falling. Do not attach any parts intended to prevent the TV from tipping over or falling (such as belts etc.) to this unit. Doing so may cause damage to the unit, or result in fire or electric shock. Doing so may also mean the TV can tip over or fall, and being damaged or causing injury.

5 Connect the power cord.

Note

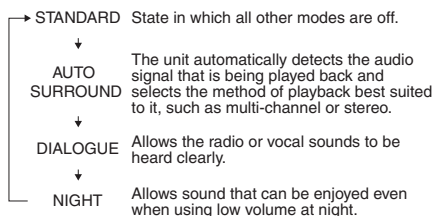
- Some TVs have settings for digital audio output. For details, see the operating instructions for your TV.
- Set audio output from the built-in speakers of the TV to OFF. If this cannot be set, set the TV volume to the minimum level.

Sound controls

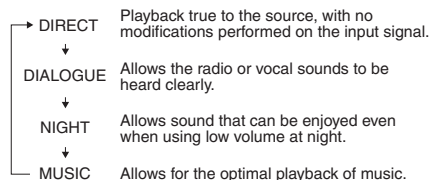
Surround mode

When **SURROUND** is pressed on the remote control the current mode setting will be displayed. To change to a different mode, press the **SURROUND** repeatedly until the desired sound mode appears. The modes that can be selected differ depending on the input.

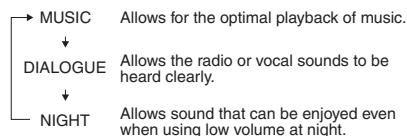
TV, BD, Analog In



AirPlay



USB/iPod, BT AUDIO, Music Server, DMR, Favorites, Spotify, TUNER (FM, DAB)



ALC (Auto Level Control) mode

The unit will automatically level any differences in volume between multiple music sources on a portable digital audio player etc. and then play them back in stereo. When the power is first turned on, **ALC** mode is set to **OFF**. In order to turn **ALC** mode **ON**, press **TOOLS** on the remote control and then use **↑/↓/←/→** to select on.

Emphasizes low range (P.BASS)

When the power is first turned on, **P.BASS** mode is set to **OFF**. In order to turn **P.BASS** mode **ON**, press **TOOLS** on the remote control and then use **↑/↓/←/→** to select on.

Bass/treble control

Press **TOOLS** on the remote control and then use **↑/↓/←/→** to make adjustments.



Note

- Adjustments can be made between the range of -5 and +5.
- BASS/TREBLE** can operate alongside **P.BASS**.

Setting the wake-up timer

Used to change the existing timer setting, or to set a new timer.

- Press **⏻** **STANDBY/ON** to turn the power on.
- Press and hold **CLK/TIMER**.
- Press **←/→** to select "ONCE" or "DAILY", then press **ENTER**.
ONCE – Works once only at a preset time.
DAILY – Works at the preset time on a preset day.
- Press **←/→** to select "TIMER SET", then press **ENTER**.
- Press **←/→** to select the timer playback source, then press **ENTER**.
 - DAB, FM, USB/iPod and Spotify can be selected as the playback source.
- Press **←/→** to select the timer day, then press **ENTER**.
- Press **←/→** to set the hour, then press **ENTER**.
- Press **←/→** to set the minute, then press **ENTER**.
 - Set the time to finish as in steps 7 and 8 above.
- Adjust the volume press **VOLUME +/-**, then press **ENTER**.
- Press **⏻** **STANDBY/ON** to enter the power standby mode.
 - The **TIMER** indicator lights up.

Calling the wake-up timer

An existing timer setting can be reused.

- 1 Follow steps 1 to 3 in "Setting the wake-up timer".
- 2 Press **←/→** to select "TIMER ON", then press **ENTER**.

Cancelling the wake-up timer

Turn off the timer setting.

- 1 Follow steps 1 to 3 in "Setting the wake-up timer".
- 2 Press **←/→** to select "TIMER OFF", then press **ENTER**.

Using the wake-up timer

- 1 Press **⏻** STANDBY/ON to turn the power off.
- 2 At the wake-up time, this unit will turn on automatically and play the selected input function.



Note

- If at the wake-up time an iPod/iPhone is not connected to the unit, the unit will be turned on but will not play back the track.
- When setting the timer set at least one minute between the start and end time.

Using the sleep timer

The sleep timer switches off the unit after a specified time so you can fall asleep without worrying about it.

- 1 Press **SLEEP** repeatedly to select a switch off time.

Choose between 10 min, 20 min, 30 min, 60 min, 90 min, 120 min, 150 min, 180 min or OFF. The newly set value displays for 3 seconds, and then the setting is completed.



Note

- The sleep timer can be set by pressing **SLEEP** while the remaining time is displayed.

Chapter 5:

Basic operation

Outputting the sound of a device connected to the unit

The following describes the procedure up until listening to the sound of a device connected to the unit.

- 1 Turn on the power of the connected device.
- 2 Press **STANDBY/ON** to turn the power on.
- 3 Press **INPUT SELECT** or an input selection button on the remote control.

Switch to the input you wish to play and then start playback on the connected device.

- 4 Press the **VOLUME** to adjust the volume.

To temporarily mute the sound, press the **MUTE**. Press the button again or adjust the volume to cancel mute.

Note

- When the unit is connected to a TV, set the volume to the minimum level or mute the sound. Also, if the TV speaker sound can be turned off in the settings menu of the TV, set it to OFF.

Linking power for the unit and a TV

If a TV is connected to the unit's optical digital audio input terminal and the **Wake Up TV** function is turned **ON**, then the power for the unit will come on when the TV is turned on, and the unit will switch to Optical In.

- 1 Press **HOME MENU**.
- 2 Press **↑/↓** to select "Wake Up TV", then press **ENTER**.
- 3 Press **↑/↓** to select "ON" or "OFF", then press **ENTER**.

Chapter 6:

iPod/iPhone playback

Merely by connecting your iPod/iPhone to this unit, you can enjoy high-quality sound from your iPod/iPhone. Playback setting for iPod/iPhone music can be performed from this unit or the iPod/iPhone itself.

Confirming what iPod/iPhone models are supported

The iPod/iPhone playable on this unit are shown below.

iPod/iPhone	USB terminal
iPhone 6 Plus/6/5s/5c/5/4s/4/3GS	✓
iPod touch 5G/4G	✓
iPod nano 7G/6G/5G/4G	✓



Note

- Pioneer does not guarantee that this unit plays iPod/iPhone models other than the ones specified.
- Some functions may be restricted depending on the model or software version.
- iPod/iPhone is licensed for reproduction of non-copyrighted materials or materials the user is legally permitted to reproduce.
- Features such as the equalizer cannot be controlled using this system, and we recommend switching the equalizer off before connecting.
- Pioneer cannot under any circumstances accept responsibility for any direct or indirect loss arising from any inconvenience or loss of recorded material resulting from iPod/iPhone failure.
- For detailed instructions on using the iPod/iPhone, please refer to the manual supplied with the iPod/iPhone.
- This system has been developed and tested for the software version of iPod/iPhone indicated on the website of Pioneer (<http://pioneer.jp/homeav/support/ios/eu/>).
- Installing software versions other than indicated on the website of Pioneer to your iPod/iPhone may result in incompatibility with this system.
- This unit cannot be used to record tuner or other content on an iPod/iPhone.
- If an iPod/iPhone is connected to the unit, the unit will automatically begin charging it.

Chapter 7:

USB playback

Playing USB storage devices

It is possible to listen to two-channel audio using the USB interface on the side of this unit.

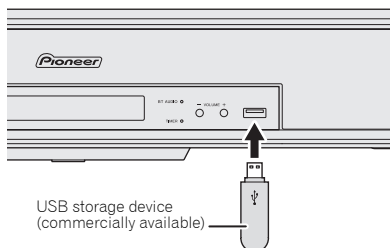
- Pioneer does not guarantee that any file recorded on a USB storage device will play or that power will be supplied to a USB storage device. Also note that Pioneer will accept no responsibility whatsoever for loss of files on USB storage devices caused by connection to this unit.

1 Press USB as the input source.

"USB/iPod" is shown on the main display.

2 Connect the USB storage device.

- This unit does not support a USB hub.



3 When recognition is completed, the root directory folder/file name will be shown on the display.

4 Press \uparrow/\downarrow to select a folder/file, then press ENTER.

Select a folder and the folders/files inside it will be displayed. Select a file and playback will start.

5 Disconnect USB storage device from the USB terminal.

Note

- USB flash drive that supports USB 2.0 can be used.
- This unit may not recognize a USB storage device, play files or supply power to a USB storage device. For details, see *When a USB storage device is connected* on page 49.
- When a USB storage device is not playing and no operations have been performed for more than 20 minutes, the unit will automatically power off.

- Auto power off can be switched to **ON/OFF** (page 43).
- Installing the ControlApp to your mobile device and then connecting it to this unit will allow for more convenient control (page 31).

Repeat play

Repeat play can play one track, all tracks or a programmed sequence continuously.

To repeat one track:

Press **REPEAT** repeatedly until "REPEAT ONE" appears. Press **ENTER**.

To repeat all tracks:

Press **REPEAT** repeatedly until "REPEAT ALL" appears. Press **ENTER**.

To cancel repeat play:

Press **REPEAT** repeatedly until "REPEAT OFF" appears. Press **ENTER**.

Note

- After performing repeat play, be sure to press **■**. Otherwise, the file of USB storage device will play continuously.

Random play

The file of USB storage device can be played in random order automatically.

To random play all tracks:

Press **RANDOM** repeatedly until "RANDOM ON" appears. Press **ENTER**.

To cancel random play:

Press **RANDOM** repeatedly until "RANDOM OFF" appears. Press **ENTER**.

Note

- In random play, the unit will select and play tracks automatically. (You cannot select the order of the tracks.)

Switch the display contents

The unit can display the information recorded in the USB storage device.

1 Press DISP.

The information recorded in the USB storage device will be displayed on the unit's display

Chapter 8:**Connect network****Setting with a special application (Start-up Navi)**

If you have a smart phone or tablet, once you download and start the special application, the settings can be done according to the instructions by the application.

- **If you have an iPhone or iPod touch**

Please search for "Start-up Navi" app in the App Store.



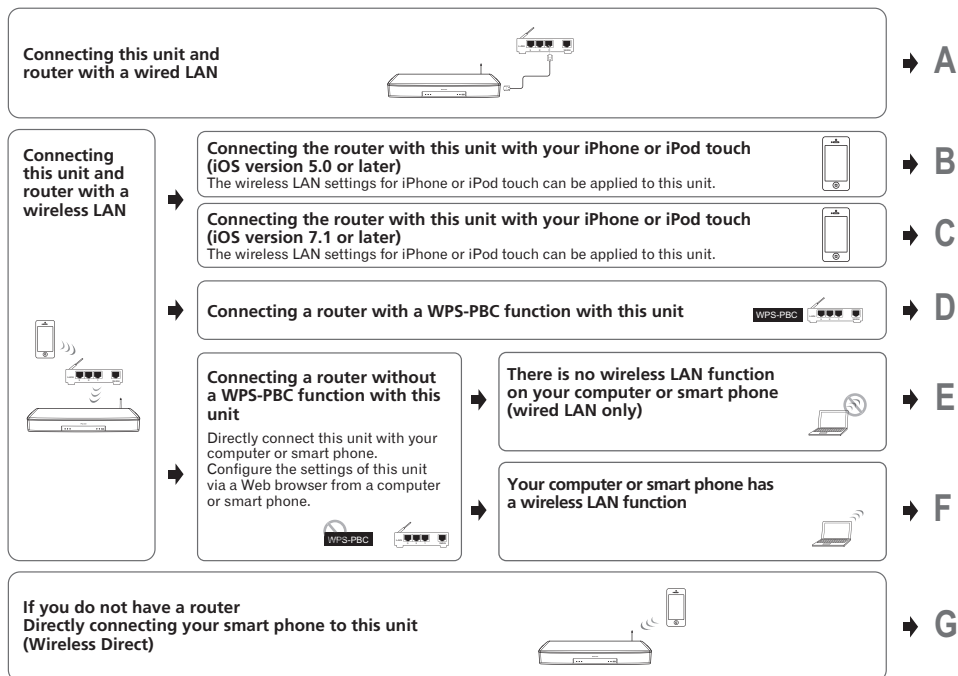
- **If you have an Android device**

Please search for "Start-up Navi" app in Google Play.



Setting network connection

This part explains the connection settings for all networks.



- When connection method B, C, D, E, or F is selected, check that the LAN cable is not connected to this unit.
- Warning when connecting a wireless LAN router with this unit
SSID is compatible only with single-byte alphanumerical characters and some symbols such as the underbar. If characters other than these are used, change the SSID before executing network settings. Refer to the user's manual for your router for information on SSID.

When setting this unit by A-G, first show the settings screen using the following procedures.

1 Select the setting you want to adjust.

If you are doing this for the first time, you may want to adjust these settings under the home menu in order:

- **Network INFO** – The setting status of the following network-related items can be checked (page 29).
- **Network Type Set** – Select the network connection method.

A: Connecting with a LAN cable (wired LAN)

Simply connect the LAN cable. Network settings are unnecessary.

- When wireless LAN is set once, the following procedures 1 through 3 must be executed.

- 1 Select **"Network Type Set"** from the **HOME MENU**.
- 2 Use **↑/↓** to select **"Wired"**.
- 3 Press **ENTER**.

A-1: Wired connection to a router with DHCP server

- 1 Confirm that this unit is powered off.
- 2 Use a LAN cable to connect this unit and your router.
- 3 Press **⏻ STANDBY/ON**.

Wait for about 30 to 40 seconds.

- 4 When the power is fully turned on, the **NETWORK** indicator will light white.

A-2: Setting this unit from the web browser of a computer that supports a wired LAN connection

- Only when connected to a network without a DHCP server function, the following network settings are necessary. Check the setting value with the provider or network administrator in advance when executing the settings. Also refer to the user's manual for network equipment.
- IP Address**
The IP address to be entered must be defined within the following ranges. If the IP address defined is beyond the following ranges, you cannot play back audio files stored on components on the network or listen to Internet radio stations.
Class A: 10.0.0.1 to 10.255.255.254
Class B: 172.16.0.1 to 172.31.255.254
Class C: 192.168.0.1 to 192.168.255.254
- Subnet Mask**
In case an xDSL modem or a terminal adapter is directly connected to this unit, enter the subnet mask provided by your ISP on paper. In most cases, enter 255.255.255.0.
- Default Gateway**
In case a gateway (router) is connected to this unit, enter the corresponding IP address.
- Primary DNS Server/Secondary DNS Server**
In case there is only one DNS server address provided by your ISP on paper, enter it in the **"Primary DNS Server"** field. In case there are more than two DNS server addresses, enter **"Secondary DNS Server"** in the other DNS server address field.

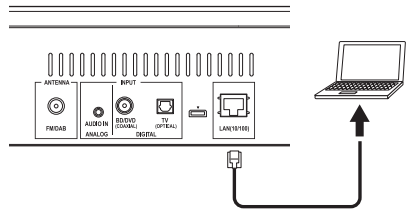
- Proxy Hostname/Proxy Port**

This setting is required when you connect this unit to the Internet via a proxy server. Enter the IP address of your proxy server in the **"Proxy Hostname"** field. Also, enter the port number of your proxy server in the **"Proxy Port"** field.

- 1 Turn off power to the unit.

If a LAN cable is connected to the unit, disconnect the LAN cable from the unit.

- 2 Use a LAN cable to connect the unit to the computer.



- 3 Press **⏻ STANDBY/ON**.

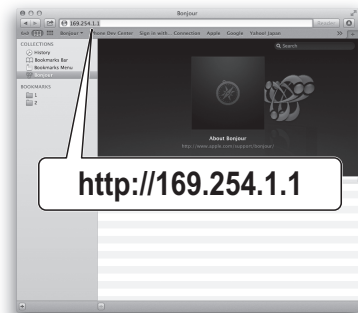
Wait for about 30 to 40 seconds.

- 4 Wait for the **NETWORK** indicator to change from flashing to steadily lighted red.

This may require up to 90 seconds or so.

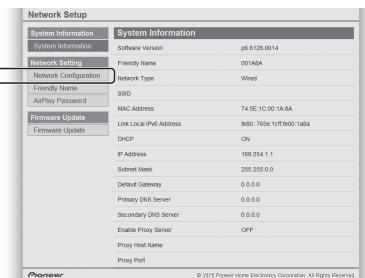
- 5 When the **NETWORK** indicator lights red, start your computer's Web browser, and access the URL noted below to make settings for this unit.

The Web Control menu will appear.



6 From the menu on the left, select "Network Configuration".

If you wish to change the Friendly Name, select "Friendly Name" from the menu and change the name before selecting "Network Configuration".

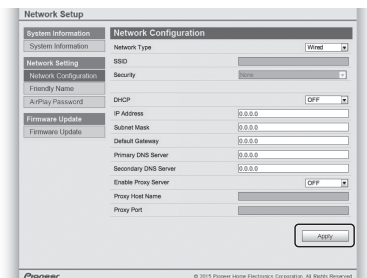


10 Enter the address of your proxy server or the domain name.

11 Enter the port number of your proxy server.

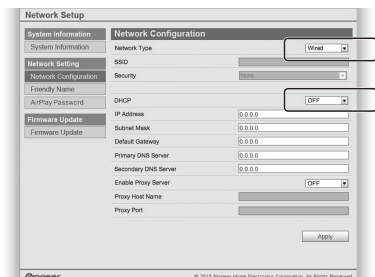
12 When settings are completed, click on "Apply".

The unit will automatically power down.



7 Perform the following settings on the "Network Configuration".

- Network Type: Wired
- DHCP: OFF



13 Confirm that the power is switched on for the router.

If using a wired LAN, connect the unit and the router using a LAN cable. If using a wireless LAN, disconnect the LAN cable from the unit.

14 Press **STANDBY/ON**.

When the power is completely on, the **NETWORK** indicator will light white, indicating that settings are completed.

B: Setting this unit with iOS equipment (iOS version 5.0 or later)

The Wi-Fi settings of your iPod/iPhone (equipment with iOS version 5.0 or later) can be applied to this unit.

- The iOS equipment and router must be connected through Wi-Fi.
- Check that the LAN cable is not connected to this unit.
- When wired LAN is set once, the following procedures 1 through 3 must be executed.

1 Select "Network Type Set" from the HOME MENU.

2 Use **↑/↓** to select "Wireless".

3 Press ENTER.

The home menu will be disabled for about 60 seconds. After 60 seconds, execute the following operation.

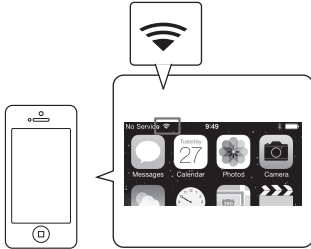
8 Enter the IP Address, Subnet Mask, Default Gateway, Primary DNS Server and Secondary DNS Server.

9 Select "OFF" or "ON" for the Enable Proxy Server setting to deactivate or activate the proxy server.

In case you select "OFF", proceed with Step 12. In case you select "ON", on the other hand, proceed with Step 10.

4 Unlock the iPod/iPhone.

Check that the Wi-Fi operation mark is shown on the screen of the iOS equipment.



5 Connect the iOS equipment to the iPod/iPhone terminal on the front panel.

6 Press NETWORK SET UP on the front panel.

7 Tap [Allow] on iPod/iPhone.

The Wi-Fi settings of your iPod/iPhone is applied to this unit.

C: Perform this unit's settings using the iOS equipment (iOS version 7.1 or later)

The Wi-Fi settings of your iPod/iPhone (equipment with iOS version 7.1 or later) can be applied to this unit.

- The iOS equipment and router must be connected through Wi-Fi.
- Check that the LAN cable is not connected to this unit.
- When wired LAN is set once, the following procedures 1 through 3 must be executed.

1 Select "Network Type Set" from the HOME MENU.

2 Use ↑/↓ to select "Wireless".

3 Press ENTER.

The home menu will be disabled for about 60 seconds. After 60 seconds, execute the following operation.

4 Unlock the iPod/iPhone.

Check that the Wi-Fi operation mark is shown on the screen of the iOS equipment.

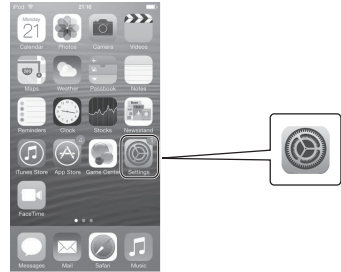
5 Press NETWORK SET UP and VOLUME – on the front panel together for 3 seconds.

6 The unit will enter WAC mode.

WAC (Wireless Accessory Configuration) mode is a mode that allows you to set the network settings by operating this unit as a Wi-Fi access point.

7 Operate the screen of the iPhone or iPod touch.

- Check that the Wi-Fi mark is displayed on the screen of the iPhone or iPod touch.
If the mark is not displayed, activate Wi-Fi, and connect the iPhone or iPod touch to a wireless LAN router.
- Select the settings.



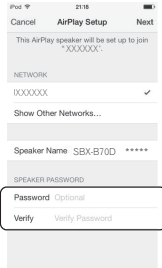
- Select [Wi-Fi].



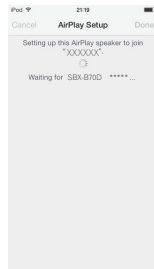
- In [Set new AIRPLAY speaker], select Friendly Name (iOS 7) or SSID (iOS 6 or older).



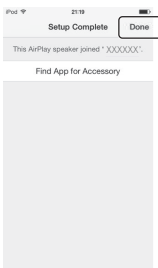
- Select [Next].



- Wait until the processing is complete.



- Select [Complete].



- Even when using a Mac OS, if "Set new AIRPLAY speaker" is displayed on the "Wi-Fi" setting screen then it may be possible to perform settings using the controls described above.

D: WPS connection settings

WPS is an abbreviation for "Wi-Fi Protected Setup". This is a standard stipulated by the Wi-Fi Alliance, and connection to WPS compatible equipment and security settings can be performed using simple operations.

This unit is compatible with PBC (push button) method.

- **PBC** (Push-button method) – Connection settings are automatically done by simply pressing the WPS button on wireless LAN equipment that is WPS-compatible. Follow the instructions shown on the screen of this unit. This setting method is available when there is a WPS button on the wireless LAN equipment which is WPS-compatible, and is the easiest method for connection settings.
- Check that your router is compatible with PBC.
- Check that the LAN cable is not connected to this unit.
- When wired LAN is set once, the following procedures 1 through 3 must be executed.

1 Select "Network Type Set" from the HOME MENU.

2 Use ↑/↓ to select "Wireless".

3 Press ENTER.

The home menu will be disabled for about 60 seconds. After 60 seconds, execute the following operation.

4 Press NETWORK SET UP and INPUT SELECT on the front panel together for 3 seconds.

The **NETWORK** indicator will flash blue.

5 Press your router's WPS button within 2 minutes.

Please refer to your router's user manual for details on router operation.

6 Network connection settings will be performed automatically.

Once settings are completed the **NETWORK** indicator will change from flashing blue to remaining lit white.

Note

- This screen is iOS 7.1. When software other than iOS 7.1 is installed on an iPhone or iPod touch, the operation for the iPhone or iPod touch may change.

E: Setting the wireless LAN setting for this unit from the web browser of a computer that supports a wired LAN connection

- When wireless LAN is set once, the following procedures 1 through 3 must be executed.

1 Select "Network Type Set" from the HOME MENU.

2 Use ↑/↓ to select "Wired".

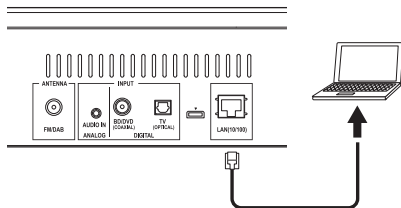
3 Press ENTER.

The home menu will be disabled for about 60 seconds. After 60 seconds, execute the following operation.

4 Turn off power to the unit.

If a LAN cable is connected to the unit, disconnect the LAN cable from the unit.

5 Use a LAN cable to connect the unit to the computer.



6 Press STANDBY/ON.

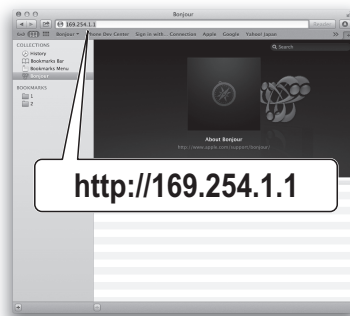
Wait for about 30 to 40 seconds.

7 Wait for the NETWORK indicator to change from flashing to steadily lighted red.

This may require up to 90 seconds or so.

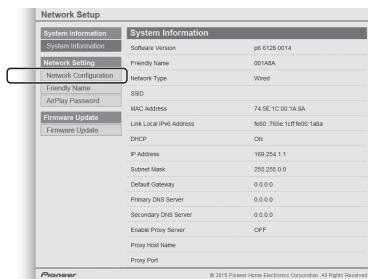
8 When the NETWORK indicator lights red, start your computer's Web browser, and access the URL noted below to make settings for this unit.

The Web Control menu will appear.

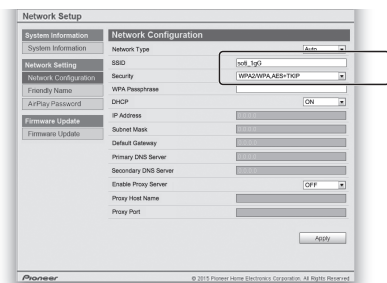


9 From the menu on the left, select "Network Configuration".

If you wish to change the Friendly Name, select "Friendly Name" from the menu and change the name before selecting "Network Configuration".

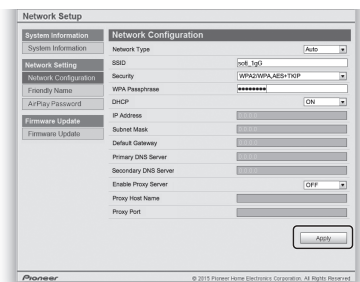


10 On the "Network Configuration", input the router's SSID, then select the "Security" item set on the router.

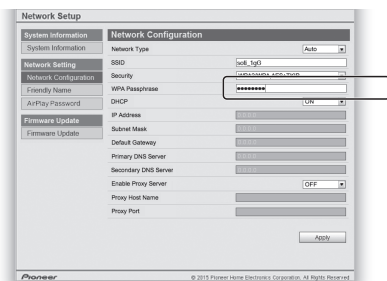


16 When settings are completed, click on "Apply".

The unit will automatically power down.



11 If a password is requested, input it here.



17 Disconnect the LAN cable from the unit and confirm that the router's power is ON.

If you intend to use the unit in a wired configuration, use a LAN cable to connect the unit to the router.

18 Press **STANDBY/ON**.

When the power is completely on, the **NETWORK** indicator will light white, indicating that settings are completed.

F: Setting the wireless LAN setting for this unit from the web browser of a computer that supports a wireless LAN connection

To set with this method, your computer must be compatible with wireless LAN functions.

Network settings are performed on the browser on your computer.

- Check that the LAN cable is not connected to this unit.
- When wired LAN is set once, the following procedures 1 through 3 must be executed.

1 Select "Network Type Set" from the HOME MENU.

2 Use **↑/↓** to select "Wireless".

3 Press **ENTER**.

The home menu will be disabled for about 60 seconds. After 60 seconds, execute the following operation.

4 Press **NETWORK SET UP** and **VOLUME –** on the front panel together for 3 seconds.

5 The unit will enter WAC mode.

12 Select "OFF" or "ON" for the Enable Proxy Server setting to deactivate or activate the proxy server.

In case you select "OFF", proceed with Step 15. In case you select "ON", on the other hand, proceed with Step 13.

13 Enter the address of your proxy server or the domain name.

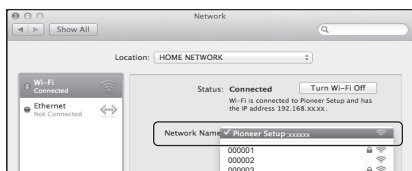
14 Enter the port number of your proxy server.

15 Select the DHCP setting you want.

If you are asked to input a fixed IP address, perform settings after turning DHCP OFF. For details, see *A: Connecting with a LAN cable (wired LAN)* on page 22.

6 Select [Pioneer Setup] (this unit) from the list of wireless LAN connections on your computer.

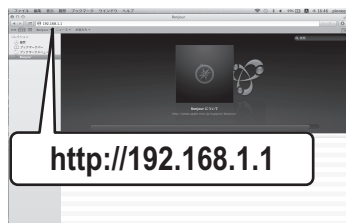
[Pioneer Setup:xxxxxxx] will be shown in the SSID field. "xxxxxxx" represents a number unique to each product.



- For your computer, iPhone, tablet computer, or wireless equipment, refer to the respective user's manual.
- Because this connection is not encrypted, there is a slight security risk.
- Operation verification has been done for this setting with OS X v 10.7, Safari 5.1.

7 Start the Web browser.

Access the following URL, and start setting this unit. The Web Control menu will be shown.



8 Click IP, Proxy Setting.

9 Setup the network settings manually and then press Apply.

SSID items are generally shown automatically, but if they are not shown follow the procedures again and redo the settings. This unit will restart and the settings will be applied to this unit.

G: Directly connecting this unit with a smart phone by wireless (Wireless Direct)

- When wired LAN is set once, the following procedures 1 through 3 must be executed.

1 Select "Network Type Set" from the HOME MENU.

2 Use ↑/↓ to select "Wireless".

3 Press ENTER.

The home menu will be disabled for about 60 seconds. After 60 seconds, execute the following operation.

4 Press NETWORK SET UP on the front panel for 3 seconds.

The **NETWORK** indicator will turn blue and "W DIRECT ON" will be displayed on the display. Wait for about 10 to 20 seconds.

5 Once the **NETWORK** indicator turns blue, select "Wireless Direct N: xxxxxx" under "Wi-Fi Network Settings" on your computer, iPhone, tablet or other wireless device.

- N: Value from 0 to 9
The initial value is 0. Will increase in sequence 1, 2, 3... each time that Wireless Direct is executed.
- "xxxxxx" represents the identification number of a unit. Depending on the device you are using, there may not be room to display all of the text. For details on operation of your computer, iPhone, tablet or other wireless device, please see the respective user manual.

Connection is now complete. (The **NETWORK** indicator will remain on in blue)

Checking the Network Information

The setting status of the following network-related items can be checked.

- **Signal Strength** – Check the strength of the wireless signal.
- **IP Address** – Check the IP address of this unit.
- **MAC Address** – Check the MAC address of this unit.
- **Network Type** – Check the network connection status (**Wired/Wireless**).
- **SSID** – Check the SSID during wireless connection.
- **DHCP** – Check whether DHCP is being used (**ON**), or isn't being used (**OFF**).
- **Default Gateway** – If a gateway (router) is connected to this player, enter the corresponding IP address.

The status of these items can be checked from the HOME MENU under "Network INFO".

1 Display "Network INFO" from the HOME MENU, then press ENTER.

2 Use ↑/↓ to display the item you wish to check, then press ENTER.

Note

- Use the following steps to check your IPv6 Address.
 - Enter "http://(the unit's IP address)" into your web browser's address bar.
 - Select "Network Setup" from your web browser.
 - The Link Local IPv6 Address will be displayed.

Chapter 9:

Listening to Spotify audio streaming playback

About the Spotify audio streaming playback function

Spotify is a music streaming distribution service managed and operated by Spotify Ltd. and distributing music over the Internet.

Spotify audio streams can be enjoyed using this unit and your smartphone or other mobile digital device.

Preparations (1) Installing the Spotify application on mobile digital devices and registering a Spotify Premium account

Note

- The Spotify application must be installed on mobile digital devices and you must have registered a Spotify Premium account (for a charge) in order to use the Spotify audio stream playback function on this unit. For registration procedures and other Spotify services, see the Spotify website.
<http://www.spotify.com/>
<http://www.spotify.com/connect/>
- For information on the countries and regions where Spotify services can be used, see the website below.
<http://www.spotify.com/>
- Spotify functions may be changed without notice. An Internet connection is required on the mobile digital device in order to use the Spotify application. Using the mobile telephone line for the Internet connection tends to lead to high packet communication charges, so we recommend subscribing to a fixed packet rate plan. For details, contact your mobile telephone operator.

Preparations (2) Connecting this unit to the network

- Connect this unit to the network and also to the Internet (page 12).
- Connect the mobile digital device by Wi-Fi to the wireless LAN router of the same network as the one to which this unit is connected. For instructions on connecting, see the operating instructions of the mobile digital device and the wireless LAN router.

In order to use the Spotify audio stream playback function from the Spotify application

To use the Spotify audio stream playback function, select this unit on the Spotify application. When Spotify audio streaming starts, this unit's input automatically switches to Spotify.

CAUTION

- Even if you are away from home, if you start Spotify audio streaming to play music on your mobile digital device and this unit is selected, the sound will be output from this unit. Depending on the volume level, the output may be loud, so be sure to check the audio output selection carefully before starting audio streaming. In addition, if you accidentally select this unit and play the sound on it, switch the audio output selection to the mobile digital device.

Note

- A separate contract with/payment to an Internet service provider is required to use the Spotify audio stream playback function.
- This unit's name is displayed as the playback device on the Spotify application. Also, this unit's name can be changed at Friendly Name in the network settings.
- When this unit is selected with the Spotify application, the account information is registered on this unit as well. When disposing of this unit, reset this unit's settings in order to delete the account information registered on this unit. For instructions on resetting, see this unit's operating instructions.

Using This Device With Spotify Connect

Spotify lets you listen to millions of songs – the artists you love, the latest hits and discoveries just for you.

If you are a Spotify user, you can control this device using your Spotify app.

Step 1. Connect your device to the same wifi network as your phone, tablet or PC running the Spotify app.

Step 2. Open the Spotify app, and play any song.

Step 3. Tap the song image in the bottom left of the screen.

Step 4. Tap the Connect icon .

Step 5. Pick your device from the list.

For information on how to set up and use Spotify Connect please visit
www.spotify.com/connect

Licenses

The Spotify Software is subject to third party licenses found here: www.spotify.com/connect/third-party-licenses.

Installing ControlApp

The Pioneer application ControlApp must be installed on your mobile device. For more information about your operating environment, access the appropriate Website as noted below.

If using an iPhone or iPod touch

You can obtain from "App Store".

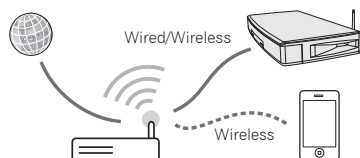
If using an Android device

You can obtain from "Google Play".

Using ControlApp

If using ControlApp for the first time, follow these procedures to start the application.

- 1 Connect this unit to the network you normally use.**
- 2 Connect your mobile device to the same network.**
Confirm that ControlApp is installed on your mobile device.
- 3 Turn on the power to this unit.**
- 4 Start ControlApp on your mobile device.**



- 5 Tap the "Download".**

When download is completed, the CONTROL screen will be displayed.



Chapter 10:

Music server

Installation of the Pioneer Control Application (ControlApp) is required in order to use all of the Music server functions.

Consult the following website:

When using iPhone/iPod touch

http://pioneer.jp/support/soft/iapp_controlapp/en.html

When using Android

http://pioneer.jp/support/soft/aapp_controlapp/en.html

For details, *Installing ControlApp* (page 31) and *Using ControlApp* (page 31).

This unit can play audio files stored on computers or other components on a Local Area Network (LAN).

Introduction

This unit allows you to listen to audio files on a computer or other component connected to the unit via LAN interface. This chapter describes the setup and playback procedures required to enjoy these features. It is advisory that you also refer to the operation manual supplied with your network component.



Note

- Photo or video files cannot be played back.

Playing music on Music server

1 Connect this unit and your mobile device to a network.

The Music server function cannot be used when using a wireless Direct connection.

2 Start ControlApp.

3 Tap the Music Server.

The servers on the network will be displayed.

4 Tap the server you want to playback from, and then select the track to playback from the server.

Audio playback will begin.



Note

- If no play back and no operation has done for 20 minutes or more, the unit turns off automatically.
- Auto power off can be switched to **ON/OFF** (page 43).

About playable DLNA network devices

This unit allows you to play music on media servers connected on an identical Local Area Network (LAN) as the unit. This unit allows you to play files stored on the following devices:

- PCs running Microsoft Windows Vista with Windows Media Player 11 installed
- PCs running Microsoft Windows 7 with Windows Media Player 12 installed
- DLNA-compatible digital media servers (on computers or other components)

Files stored in a computer or DMS (Digital Media Server) as described above can be played via command from an external Digital Media Controller (DMC). Devices controlled by this DMC to play files are called DMRs (Digital Media Renderers). This unit supports this **DMR** function.

When this unit is selected as a DMR and DMS playback is begun, the unit's input automatically switches to **DMR**. When in the **DMR** mode, such operations as playing and stopping files can be performed from the external controller. Volume adjustment and the muting control are also possible.



Important

- You cannot access a computer on a network while you are logged onto a domain that is configured in a Windows network environment. Instead of logging onto the domain, log onto the local machine.
- There are cases where the time elapsed may not be correctly displayed.



Note

- Depending on the external controller being used, playback may be interrupted when the volume is adjusted from the controller. In this case, adjust the volume from the unit or remote control.

Playing back your favorite songs

Up to 64 favorite tracks on the media server can be registered in **Favorites** function. Note that only the audio files stored on components on the network can be registered.

Registering and deleting audio files in and from Favorites

1 Use the ControlApp to select Music Server input.

2 Use the ControlApp to select the track that you wish to register, and then tap the green star mark ★.

The selected song is registered in **Favorites**.



Note

- On the ControlApp's Favorites List Screen, long press the track that you wish to delete, and then tap the white star mark ☆ when it appears.

Chapter 11:

AirPlay

Using AirPlay on iPod touch, iPhone, iPad and iTunes

AirPlay works with iPhone, iPad and iPod touch with iOS 4.3.3 or later, and Mac and PC with iTunes 10.2.2 or later.

To use AirPlay, select your unit on your iPod touch, iPhone, iPad or in iTunes and start playback. For more information, see the Apple website (<http://www.apple.com>).

- Adjustment of the unit's volume from iPod touch, iPhone, iPad or iTunes.
- ►/|| (play/pause), ◀◀ (prev), and ▶▶ (next) track, and random/repeat from the remote control of the unit. The display will not show the Play Status, Repeat, or random icons.

Playing audio files stored on computers or other components

Connecting to the LAN network

Be sure to connect computer or other components to the network using the LAN interface before you use this function.

For details on the connections, see *Connecting to the network through the LAN interface or WLAN antenna* on page 12

Using AirPlay to enjoy music

- 1 Confirm that the iPod touch, iPhone, iPad, iTunes and this unit are connected to the same wired or wireless network.
- 2 Play music on iPod touch, iPhone, iPad or iTunes.
- 3 During playback, tap the AirPlay icon (📶) displayed on the iPod touch, iPhone, iPad or iTunes.
- 4 Select this unit's name ("Friendly Name") from the available device list.

Operating AirPlay from an iPod/iPhone/iPad

- 1 Set the iPhone, iPod touch or iPad to music playback mode.

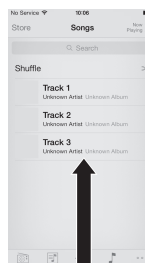
Confirm that the Wi-Fi operation mark  is displayed.



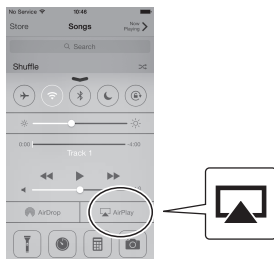
Note

- Turn the iPhone, iPod touch or iPad Wi-Fi on, and connect to the wireless LAN router. Refer to the user manual of the device you are using for details on how to connect it.

- 2 Swipe (slide) your finger upward from the bottom of the screen.



3 Tap (touch) AirPlay.



4 Once the name of this unit is displayed, select it.

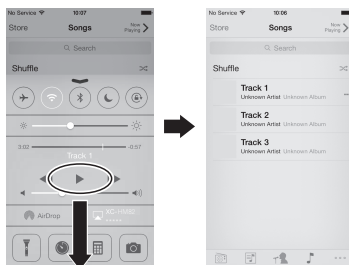


Note

- "*****" is the lower three bytes of the MAC address.

5 Select a track and play it.

Swipe (slide) and hide display of the Control Center.
Playback will begin through this unit.



Note

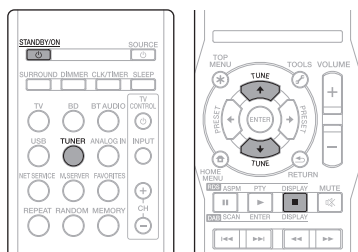
- If an AirPlay password has been set, you may be required to input the password when starting AirPlay. You may set an AirPlay password in the following ways.
 - AirPlay password on the Web Control screen

Chapter 12:

Using the tuner

Listening to the radio broadcasts

The following steps show you how to tune in to FM radio broadcasts using the automatic (search) and manual (step) tuning functions. Once you are tuned to a station you can memorize the frequency for recall later. See *Saving station presets* below for more on how to do this.



Tuning

- 1 Press the **STANDBY/ON** to turn the power on.
- 2 Press **TUNER** on the remote control or **INPUT SELECT** repeatedly on the main unit to select FM input.
- 3 Press **TUNE** **↑/↓** on the remote control to tune in to the desired station.

Automatic tuning:

Press and hold **TUNE** **↑/↓**. scanning will start automatically and the tuner will stop at the first receivable broadcast station.

Manual tuning:

Press the **TUNE** **↑/↓** repeatedly to tune in to the desired station.

Note

- When radio interference occurs, automatic tuning may stop automatically at that point.
- Automatic tuning will skip weak signal stations.
- To stop the automatic tuning, press **■**.

To receive an FM stereo transmission:

- Press **AUDIO** to select stereo mode and "AUTO" will be displayed.

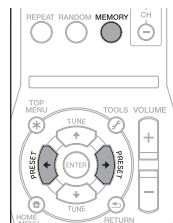
Improving poor FM reception:

- 1 Press **AUDIO** repeatedly to select **MONO**.

This will change the tuner from stereo to mono and usually improve the reception.

Saving station presets

If you often listen to a particular radio station, it's convenient to have the unit store the frequency for easy recall whenever you want to listen to that station (Preset tuning). This saves the effort of manually tuning in each time. This unit can memorize up to 30 stations.



- 1 Tune to a station you want to memorize.

See *Tuning* for more on this.

- 2 Press **MEMORY**.

The preset number will flash.

- 3 Press **PRESET** **←/→** to select the preset channel number.

- 4 Press **MEMORY** to store that station in memory.

If the preset number has changed from flashing to lighting, before the station is memorized, repeat the operation from step 2.

- Repeat steps 1 to 4 to set other stations, or to change a preset station. When a new station is stored in the memory, the station previously memorized for that preset channel number will be erased.

Note

- The backup function protects the memorized stations for a few hours should there be a power failure or the AC power cord become disconnected.

To recall a memorized station

- 1 Press PRESET \leftarrow/\rightarrow to select the desired station.

To scan the preset stations

The stations saved in the memory can be scanned automatically. (Preset memory scan)

- 1 Press and hold PRESET \leftarrow/\rightarrow .

The preset number will appear and the programmed stations will be tuned in sequentially, for 5 seconds each.

- 2 Press PRESET \leftarrow/\rightarrow again when the desired station is located.

To erase entire preset memory

- 1 Press TUNER on the remote control.
- 2 Press CLEAR until "MEMORY CLEAR" appears.



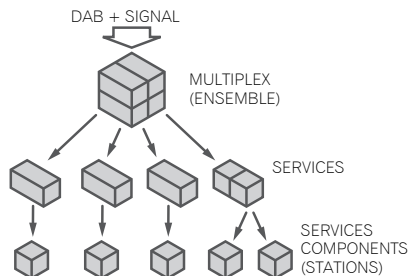
Note

- All stations will be erased.

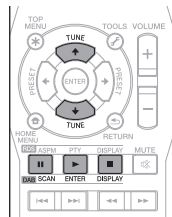
Listening to the DAB+

About DAB+ (Digital Audio Broadcasting)

Digital Audio Broadcasting is a digital transmission system where audio signals are converted to digital signals for broadcasting. DAB+ is broadcast as a group of data called multiplex (ensemble) which may contain one or more stations (services). Each station contains a primary service and there may be one or more secondary services. This allows several programmes or services to be transmitted on a single frequency.



Auto Scan



When turned on for the first time, the unit scans radio stations automatically to create a station list. You can make the auto scan again when you move the unit to other areas or add multiplex channels to the station list.

- 1 Press TUNER on the remote control or INPUT SELECT repeatedly on the main unit to select DAB input.

- 2 Press DAB SCAN on the remote control for more than 3 seconds.
Auto Scan scanning begins.

After the scan:

The stations will be stored in alphanumeric order and the first station on the list will be selected and you will hear it through the speakers.

- To listen to other stations, see *Selecting a station in the station list* below.



Note

- If no station is found, "NO SIG" appears.
- Up to 100 appears for total received stations.

Selecting a station in the station list

Once a DAB+ station is received, you can select stations in the station list.

- 1 Press the TUNER until "DAB" appears on the display.
- 2 Whilst receiving a DAB+ station, press the TUNE \uparrow/\downarrow to select the desired station.
- 3 Within 10 seconds, press the DAB ENTER on the remote control to tune into the desired station.

Manual tune

You can manually store stations which Auto Scan cannot find. If reception is poor, you can adjust the sensitivity. Manual tune is only available after Auto tune. Perform Auto Scan first.

- 1 Press the TUNER until "DAB" appears on the display.
- 2 Press the DAB SCAN once.
- 3 Within 10 seconds, press the TUNE ↑/↓ to select the DAB+ frequency.
- 4 Within 10 seconds, press the DAB ENTER.
 - If the level is too low, move the aerial or unit to improve reception.

Changing the information display

You can switch DAB+ display information.

Press the **DAB DISPLAY** button.

Each time the button is pressed, the information display changes in the following order.

When "NO SIG" appears, the **DAB DISPLAY** button does not allow you to change the display.

[Station Name]

Station name is displayed. (set by default)

[Scrolling text]

Information scrolls across the display when sent from the station.

[Programme type]

A description of the type of content being broadcast by the station.

[Multiplex name]

The name of the multiplex (ensemble) which provides the current service.

[Frequency]

The DAB+ frequency for the station.

[Stereo mode]

Display stereo mode.

[Transfer speed]

The data transfer speed.

[Signal quality]

The signal quality is displayed as a number (0 - 100).

[85-100: Good, 70-84: Fair, 0-69: Poor]

Memorising a station

You can store 10 DAB stations in memory and recall them at the push of a button. (Preset tuning)

- 1 Tune to the desired DAB station.
 - 2 Press the MEMORY.
- The preset number will flash.

- 3 Within 10 seconds, press the PRESET ←/→ to select the preset channel number.

Store the stations in memory, in order, starting with preset channel 1.

- 4 Within 10 seconds, press the MEMORY to store that station in memory.

If the preset number indicators disappear before the station is memorised, repeat the operation from step 2.

- 5 Repeat steps 1 - 4 to set other stations, or to change a preset station.

When a new station is stored in the memory, the station previously memorised for that preset channel number will be erased.

DAB Frequency table (BAND III)

Frequency	Label	Frequency	Label
174.928 MHz	5A	208.064 MHz	9D
176.640 MHz	5B	209.936 MHz	10A
178.352 MHz	5C	211.648 MHz	10B
180.064 MHz	5D	213.360 MHz	10C
181.936 MHz	6A	215.072 MHz	10D
183.648 MHz	6B	216.928 MHz	11A
185.360 MHz	6C	218.640 MHz	11B
187.072 MHz	6D	220.352 MHz	11C
188.928 MHz	7A	222.064 MHz	11D
190.640 MHz	7B	223.936 MHz	12A
192.352 MHz	7C	225.648 MHz	12B
194.064 MHz	7D	227.360 MHz	12C
195.936 MHz	8A	229.072 MHz	12D
197.648 MHz	8B	230.784 MHz	13A
199.360 MHz	8C	232.496 MHz	13B
201.072 MHz	8D	234.208 MHz	13C
202.928 MHz	9A	235.776 MHz	13D
204.640 MHz	9B	237.488 MHz	13E
206.352 MHz	9C	239.200 MHz	13F

Using the Radio Data System (RDS)

An introduction to RDS

Radio Data System (RDS) is a system used by most FM radio stations to provide listeners with various kinds of information—the name of the station and the kind of show they're broadcasting, for example.

One feature of RDS is that you can search by type of program. For example, you can search for a station that's broadcasting a show with the program type, **JAZZ**.

You can search the following program types:

News – News
Current Affairs – Current Affairs
Information – General Information
Sport – Sport
Education – Educational
Drama – Radio plays, etc.
Cultures – National or regional culture, theater, etc.
Science – Science and technology
Varied Speech – Usually talk-based material, such as quiz shows or interviews.
Pop Music – Pop music
Rock Music – Rock music
Easy Listening – Easy listening
Light Classics M – 'Light' classical music
Serious Classics – 'Serious' classical music
Other Music – Music not fitting above categories
Whether & Metr – Weather reports
Finance – Stock market reports, commerce, trading, etc.

Children's Progs – Programs for children
Social Affairs – Social affairs
Religion – Programs concerning religion
Phone In – Public expressing their views by Phone
Travel & Touring – Holiday-type travel rather than traffic announcements
Leisure & Hobby – Leisure interests and hobbies
Jazz Music – Jazz
Country Music – Country music
National Music – Popular music in a language other than English
Oldies Music – Popular music from the '50s and '60s
Folk Music – Folk music
Documentary – Documentary
Alarm Test – Broadcasting when testing emergency broadcast equipment or the unit.
Alarm – Alarm

4 While the selected program type is displayed (within 6 seconds), press RDS PTY again.

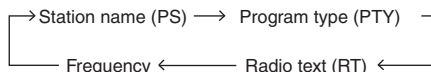
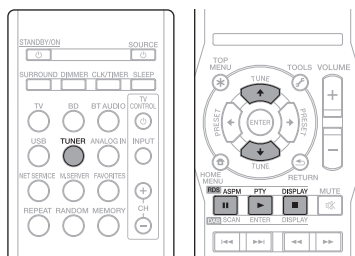
After the selected program type has been lit for 2 seconds, "SEARCH" will appear, and the search operation will start.

Note

- If the display has stopped flashing, start again from step 2. If the unit finds a desired program type, the corresponding channel number will be lit for about 8 seconds, and then the station name will be displayed.
- If you want to listen to the same program type of another station, press the **RDS PTY** while the channel number or station name is flashing. The unit will look for the next station.
- If no station can be found, "NOT FOUND" will appear for 4 seconds.

Information provided by RDS

Each time the **RDS DISPLAY** is pressed, the display will switch as follows:



Searching for RDS programs

You can search a program type listed above.

1 Press TUNER on the remote control.

2 Press RDS PTY on the remote control.

"SELECT" will appear for about 6 seconds.

3 Press ←/→ to select the program type you want to hear.

Each time the button is pressed, the program type will appear. If the button is held down, the program type will appear continuously.

When tuning in to a station other than an RDS station or to an RDS station which sends weak signal, the display will change in the following order:



Using the Auto Station Program Memory (ASPM)

While in the ASPM operation mode, the tuner will automatically search for new RDS stations. Up to 30 stations can be stored.

If you have already stored some stations in memory, the number of new stations you can store will be less.


1 Press TUNER on the remote control.

2 Press and hold down RDS ASPM on the remote control.

Scan will be performed while "ASPM" is flashing (87.5 MHz to 108 MHz).

After scanning, the number of stations stored in memory will be displayed for 4 seconds, and then "END" will appear for 4 seconds.

To stop the ASPM operation before it is complete:

Press  while it is scanning for stations. The stations which are already stored in memory will be kept there.

Note

- If the same station is broadcasting on different frequencies, the strongest frequency will be stored in memory.
- Any station which has the same frequency as the one stored in memory will not be stored.
- If 30 stations have already been stored in memory, the scan will be aborted. If you want to redo the ASPM operation, erase the preset memory.
- If no station have been stored in memory, "END" will appear for about 4 seconds.
- If the RDS signals are very weak, station names may not be stored in memory.
- The same station name can be stored in different channels.
- In a certain area or during certain time periods, the station names may temporarily be different.

Notes for RDS operation

If any of the following events occur, it does not mean that the unit is faulty:

- "PS", "No PS" and a station name appear alternately, and properly.
- If a particular station is not broadcasting properly or a station is conducting tests, the RDS reception function may not work properly.
- When you receive an RDS station whose signal is too weak, information like the station name may not be displayed.
- "No PS", "No PTY" or "No RT" will flash for about 5 seconds, and then the frequency will be displayed.

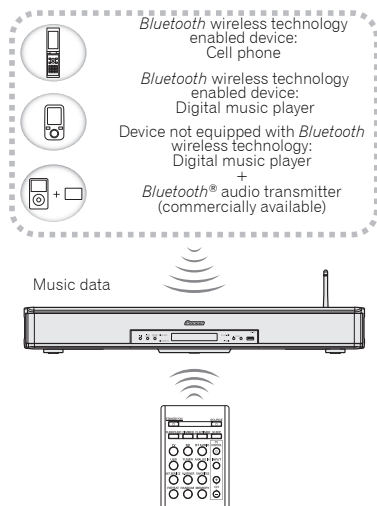
Notes for radio text:

- The first 8 characters of the radio text will appear and then they will scroll across the display.
- If you tune in to an RDS station which is not broadcasting any radio text, "No RT" will be displayed when you switch to the radio text position.
- While radio text data is received or when the text contents change, "RT" will be displayed.

Chapter 13:

Bluetooth® Audio playback

Music playback using Bluetooth wireless technology



The unit is capable of playing back music stored on *Bluetooth* capable devices (cell phones, digital music players etc.) wirelessly. You can also use a *Bluetooth* audio transmitter (sold separately) to enjoy music from devices that do not have *Bluetooth* functionality. Please refer to the user's manual for your *Bluetooth* capable device for more details.

Note

- The *Bluetooth*® word mark and logos are registered trademarks owned by Bluetooth SIG, Inc. and any use of such marks by PIONEER CORPORATION is under license. Other trademarks and trade names are those of their respective owners.
- The *Bluetooth* wireless technology enabled device must support A2DP profiles.
- Pioneer does not guarantee proper connection and operation of this unit with all *Bluetooth* wireless technology enabled devices.
- Meta information (e.g. title/artist etc.) display cannot be guaranteed for all *Bluetooth* wireless technology enabled devices.

Remote control operation

The remote control supplied with this unit allows you to play and stop media, and perform other operations.

Note

- The *Bluetooth* wireless technology enabled device must support AVRCP profiles.
- Remote control operations cannot be guaranteed for all *Bluetooth* wireless technology enabled devices.

Pairing with the unit (Initial registration)

In order for the unit to playback music stored on a *Bluetooth* capable device, pairing must first be performed. Pairing should be performed when first using the unit with the *Bluetooth* capable device, or when the pairing data on the device has been erased for any reason.

Pairing is a step required to allow communication using *Bluetooth* wireless technology to be carried out.

- Pairing is only performed the first time that you use the unit and the *Bluetooth* capable device together.
- In order to allow communication using *Bluetooth* wireless technology to take place, pairing must be performed on both the unit and the *Bluetooth* capable device.
- After pressing the **BT AUDIO** and switching to **BT AUDIO** input, perform the pairing procedure on the *Bluetooth* capable device. If pairing has been performed correctly, you will not need to perform the pairing procedures for the unit as shown below.

Please refer to the user's manual for your *Bluetooth* capable device for more details.

1 Press the **⏻** STANDBY/ON and turn the power to the unit on.

2 Press the **BT AUDIO**.

The unit switches to **BT AUDIO** and "PAIRING" will be displayed.

3 Turn on the power to the *Bluetooth* capable device that you wish to pair with, and perform pairing procedure on it.

Pairing will start.

- Place the *Bluetooth* capable device close to the unit.
- Please refer to the user's manual for your *Bluetooth* capable device for details on when pairing can be performed and the procedures required for pairing.
- When PIN code entry is requested, enter "0000." (This unit does not accept any PIN code setting other than "0000.")

4 Confirm on the *Bluetooth* capable device that pairing has been completed.

If pairing with the *Bluetooth* capable device has been completed correctly, the name of the *Bluetooth* capable device will be displayed on the front panel of the unit. (Only single-byte alphanumeric characters can be displayed. Any character that cannot be displayed will be indicated by a "■".)

On BT CONNECT LED display

Pairing condition	LED display
Pairing standby	Slow flashing
Pairing completed	Lit up

Listen to music on the unit from a *Bluetooth* capable device

1 Press the BT AUDIO.

The unit will switch to **BT AUDIO** input.

2 A *Bluetooth* connection will be created between the *Bluetooth* capable device and the unit.

Procedures for connecting to the unit should be performed from the *Bluetooth* capable device.

- Please refer to the user's manual for your *Bluetooth* capable device for details of the connection procedures.

3 Playback music from the *Bluetooth* capable device.

BT STANDBY

- The following can be done when the unit is on standby with the **BT STANDBY** switched **ON**.
- By selecting a *Bluetooth* capable device that already has a connection history (pairing has already been conducted) with this unit, this unit will automatically turn on with the **BT AUDIO** function.

BT STANDBY settings

1 Press HOME MENU.

2 Press **↑/↓** to select "Network Standby", then press **ENTER**.

3 Press **↑/↓** to select "ON", then press **ENTER**.

Connection while in BT STANDBY mode with *Bluetooth* capable device

When connection history (pairing has already been conducted) with a *Bluetooth* capable device exists for the unit during **BT STANDBY**, the unit can receive a connection request directly from the connection history.

The unit will start using the **BT AUDIO** function, and connect with a *Bluetooth* capable device.

Even devices that have already been paired with this unit will not connect during **BT STANDBY** in the following cases.

In such cases, delete pairing history from the *Bluetooth* wireless technology device and perform pairing again.

- Up to 8 pairing history can be recorded with this unit. If connecting to a *Bluetooth* wireless technology device over 8 units, the oldest pairing history will be deleted.
- If the settings are reset to the factory setting, all pairing history will be deleted.

Switch the BT AUDIO function on or off

If you wish to switch the **BT AUDIO** function between on or off, then perform the following settings.

The factory setting is **ON**.

1 Press **INPUT SELECT** on the front panel and **VOLUME –** at the same time and hold them for three seconds.

2 Press **↑/↓** on the remote control to select "ON" or "OFF", then press **ENTER** on the remote control.

3 Wait 60 seconds until "BT Setting" disappears.

Once "BT Setting" disappears then settings are complete.

Chapter 14:

PHASE CONTROL technology

PHASE CONTROL technology is used with this unit.

During multi-channel playback in a typical home theater, the LFE (Low Frequency Effects) signals and low-pitched components contained in various channels are routed to the subwoofer or other optimum speaker. However, in principle, this routing process results in a frequency where the phase is shifted (group delay), leading to problems where the low-frequency sounds only arrive delayed or low-pitched sounds cancel each other out due to interference with other channels. The PHASE CONTROL technology in the unit is used to recreate powerful low-pitched sounds that are faithful to the original sounds.

The phase indicates the time relationship between two sound waves. Two sound waves are said to be "in phase" if their peaks match up with each other, and the phases are said to be "out of phase" if their peaks do not match up.

When the PHASE CONTROL technology is used, it can provide the following effects when the sound source is played back.

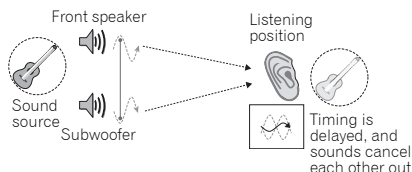
Note

- The PHASE CONTROL technology is always activated.



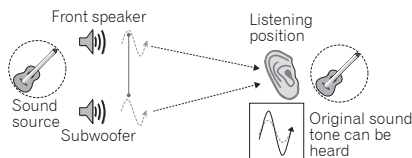
Phase Control technology is a trademark assigned to products that provide matching of the phase characteristics from recording to playback based on the PHASE CONTROL technology concept developed by PIONEER.

No PHASE CONTROL technology



- Rhythm is out of phase and unclear
- Poor quality of low-pitched sounds
- Musical instruments have an unrealistic sound

With PHASE CONTROL technology



- Clear rhythm
- Low-pitched sounds keep their quality
- Musical instruments have a realistic sound

Chapter 15:

Home menu

The **HOME MENU** button on the remote control can be used to perform a variety of settings for the unit.

Automatically switch power to standby mode (Auto Power Off)

The unit can be set to automatically change to standby mode if it does not receive any signal or control input for 20 minutes.

The factory setting is **ON**.

1 Press HOME MENU.

The currently selected input will be displayed on the display.

2 Press **↑/↓** to select "Auto Power Down", then press ENTER.

3 Press **↑/↓** to select "ON" or "OFF", then press ENTER.

Setting Network Standby mode

When Network Standby mode is **ON**, the start up sequence for the unit will be shortened. Furthermore, if AirPlay, DLNA or BT AUDIO playback is started while the unit is in this mode then power to the unit will automatically come on.

When set to Network Standby mode, power consumption during Standby will be increased when compared to normal Standby mode.

The factory setting is **ON**.

1 Press HOME MENU.

2 Press **↑/↓** to select "Network Standby", then press ENTER.

3 Press **↑/↓** to select "ON" or "OFF", then press ENTER.

Check network settings

Check the status of current network settings.

1 Press HOME MENU.

2 Press **↑/↓** to select "Network INFO", then press ENTER.

3 Press **↑/↓** to select the item you wish to check, then press ENTER.

Check software version

Can check the current software version.

1 Press HOME MENU.

2 Press **↑/↓** to select "Software Version", then press ENTER.

To go back one step, press **HOME MENU** or **RETURN**.

Software Update

Use this procedure to update the unit's software and check the version. There are two ways to update: via the Internet and via a USB memory device.

Updating via the Internet is performed by accessing the file server from the unit and downloading the file.

This procedure is only possible if the unit is connected to the Internet.

Updating via a USB memory device is performed by downloading the update file from a computer, reading this file onto a USB memory device then inserting this USB memory device into the USB port on the unit's front panel. With this procedure, the USB memory device containing the update file must first be inserted into the USB port on the unit's front panel.

- If an update file is provided on the Pioneer website, download it onto your computer. When downloading an update file from the Pioneer website onto your computer, the file will be in ZIP format. Unzip the ZIP file before saving it on the USB memory device. If there are any old downloaded files or downloaded files for other models on the USB memory device, delete them. <http://www.pioneerelectronics.com>
- If an update file does not exist in the Pioneer's website, updating the software for the unit is not necessary.

Important

- DO NOT unplug the power cord during updating.
- When updating via the Internet, do not disconnect the LAN cable. When updating via a USB memory device, do not disconnect the USB memory device.
- If updating is interrupted before it is completed, start updating over from the beginning.
- The unit's settings may be reset when the software is updated. Information on the models for which the settings are reset is provided on the Pioneer website. Check the website before updating.

1 Press **HOME MENU**.

2 Press **↑/↓** to select **"Software Update"**, then press **ENTER**.

3 Use **↑/↓** to select update method and press **ENTER**.

- **Update via Internet** - The unit checks whether updatable software is available via the Internet.
- **Update via USB Memory** - The unit checks whether the USB memory device inserted into the USB port on the unit's front panel contains updatable software. **"Accessing"** is displayed and the update file is checked. Wait a while.

4 Check on the screen whether or not an update file was found.

If **"New version found."** is displayed, the update file has been found. The version number and updating time are displayed.

If **"This is the latest version. There is no need to update."** is displayed, no update file has been found.

5 If you wish to update, use **↑/↓** to select **"OK"** and then press **ENTER**.

The updating screen appears and updating is performed.

- The power turns off automatically once updating is completed.

Firmware Update using Web browser

You can update this unit's firmware via Web browser. Download the latest firmware at Pioneer website.

1 Be sure this unit and your computer are connected to the same wired or wireless network.

2 Launch Web browser on your computer.

3 Display the Network Setup menu.

For Safari

Press Bookmark icon (🔖). Click Bonjour list (a), and then select this unit's name ("Friendly Name") (b) in Bookmark.

If Bonjour list is not displayed, access the IP address "http://(the unit's IP address)" from Safari.

Note

- The displayed name will change depending on the product being used. SBX-B70D ***** will be displayed. ("*****" is the lower three bytes of the MAC address.)



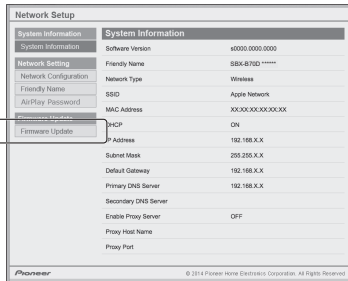
Other than Safari

Enter "http://(the receiver's IP address)" into your web browser's address bar.

Note

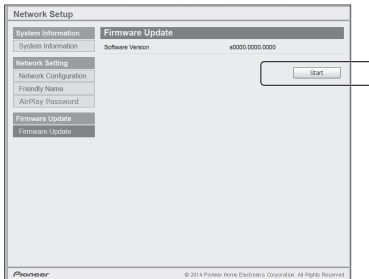
- Confirm the unit's IP address as follows:
 1. Press **HOME MENU**.
 2. Select Network INFO.
 3. Confirm the IP field.

4 Click Network Setup → Firmware Update.



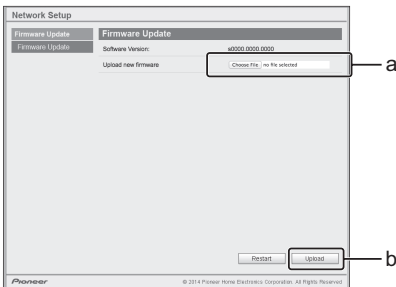
5 Press Start.

The firmware update prepare screen is displayed. If the screen does not switch automatically, click [Click here](#).



6 Browse the latest firmware on your computer (a) and then press Upload (b).

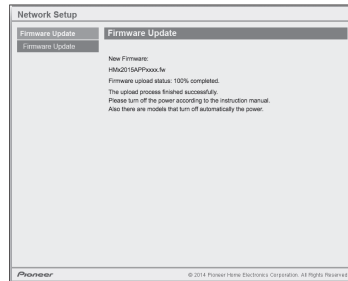
The confirmation screen is displayed. If you continue the firmware update, press **Yes**. Once the firmware update process starts, you can't stop it. Wait until the file is uploaded (about one minute may be required depending on your LAN connection environment).



7 The firmware upload status screen is displayed. Press Ok.

"The upload process finished successfully." will be shown when the update is completed.

After the update is complete, the power will turn off automatically.



Chapter 16:

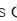
Setting the remote to control other components

Recall signal from the remote control of another device to the remote control of this unit

The remote control supplied with this unit is registered with preset codes for multiple AV devices (including products of other brands).

For a list of preset codes for all other devices that can be controlled see *Preset code list* on page 60. For the functions assigned to each button see *Control of other devices* on page 47.

- 1 Hold down SHIFT and then press either TV or BD.
- 2 Use the number buttons (0-9) to enter the 4 digit code that corresponds to the device that you wish to control.
- 3 Hold down SHIFT and then press either TV or BD.

Press  SOURCE. If the power to the desired device can be turned on/off then it means you have entered the correct code.



Note

- Even if the settings appear to have been performed correctly, there are multiple codes in which the functions of only certain buttons differ. Confirm that you can operate the device as desired.

Delete a preset code

- 1 Hold down SHIFT and then press either TV or BD.
- 2 Use the number buttons (0-9) to enter 9999.
- 3 Press SHIFT and CLEAR.

Reset all preset codes

This will reset all remote control settings, and return it to original factory settings.

Factory preset codes

TV: 0305

BD: 2255

- 1 Hold down SHIFT and then press ENTER.
- 2 Use the number buttons (0-9) to enter 12358079.
- 3 Press ENTER and CLEAR.

Control of other devices

- Performing the following controls via remote control requires that you first register the remote control code of the device that you wish to control. For more details see *Recall signal from the remote control of another device to the remote control of this unit* on page 46.
- Before starting control press either the **TV** or **BD** button to switch the remote control to control mode for the intended device. See the operating instructions for each device for more details on its specific functions.

1 Hold down SHIFT and then press the control buttons on the remote control.

Unless **SHIFT** is pressed, the remote control will remain in control of this unit only. Furthermore, certain functions of this unit can still be used even when the control mode has been switched.

Button	TV	BD
STANDBY/ON	POWER ON/OFF (this unit)*	POWER ON/OFF (this unit)*
SOURCE	POWER ON/OFF (TV)	POWER ON/OFF (BD)
TOP MENU	Previous screen	TOP MENU
/ TUNE +		
TOOLS	GUIDE	TOOLS
VOL +	VOL +*	VOL +*
/PRESET -		
ENTER	ENTER	ENTER
/PRESET +		
HOME MENU	HOME MENU	HOME MENU
/ TUNE -		
RETURN	RETURN	RETURN
VOL -	VOL -*	VOL -*
II (PAUSE)	—	II (PAUSE)
PLAY	—	PLAY
/ (STOP)	—	/ (STOP)
MUTE	—	—
	—	
	—	
	—	
	—	
Number buttons	Select channel	Input numbers
SUBWOOFER VOL +	SUBWOOFER VOL +*	SUBWOOFER VOL +*
SUBWOOFER VOL -	SUBWOOFER VOL -*	SUBWOOFER VOL -*
DISPLAY	DISPLAY	DISPLAY
AUDIO	AUDIO	AUDIO
CLEAR	10	CLEAR
SHIFT	Switch remote control mode	Switch remote control mode

* Still controls this unit even when the remote control mode has been switched.

Chapter 17:

Troubleshooting and other information

Troubleshooting

Incorrect operations are often mistaken for trouble and malfunctions. If you think that there is something wrong with this component, check the points below. Sometimes the trouble may lie in another component. Investigate the other components and electrical appliances being used. If the trouble cannot be rectified even after exercising the checks listed below, ask your nearest Pioneer authorized service center or your dealer to carry out repair work.

General problem

Problem	Check	Remedy
Settings you have made have been cleared.	Was the power cord unplugged?	When power cord is unplugged, the settings you have made is cleared. Please set the clock again. If you do not want to clear the settings, do not unplug the power cord.
Difference in volume between input devices.	This is not a problem with this unit.	The volume may sound differently depending on the input source and recording format.
This unit cannot be operated with the remote control.	Are you operating from far away?	Operate within 7 m, 30° of the remote sensor on the front panel (page 6).
	Is the remote control sensor exposed to direct sunlight or strong artificial light from a fluorescent bulb, etc.?	The remote control signals may not be received properly if the remote control sensor is exposed to direct sunlight or strong artificial light from a fluorescent bulb, etc.
	Are the batteries dead?	Replace the batteries (page 6).
Folder or file names are not recognized.	Have you exceeded the maximum number of folder or file names this unit can recognize?	Up to 255 folders can be recognized on one disc. Up to 999 files can be recognized within one folder. Depending on the folder structure, however, this unit may not be able to recognize certain folders or files.
The unit turns off automatically.		If no play back and no operation has done for 20 minutes or more, the unit turns off automatically. Auto power off can be switched to ON/OFF (page 43).

When a USB storage device is connected

Problem	Check	Remedy
USB storage device is not recognized.	Is the USB storage device properly connected?	Connect the device securely (all the way in).
	Is the USB storage device connected via a USB hub?	This unit does not support USB hubs. Connect the USB storage device directly.
	Is the USB storage device supported by this unit?	This unit only supports USB mass storage class devices.
		This unit supports portable flash memory and digital audio playback devices.
		Only the FAT16 and FAT32 file systems are supported. Other file systems (exFAT, NTFS, HFS etc.) are not supported.
		USB flash drive that supports USB 2.0 can be used.
		This device does not support the use of external hard disc drives.
	This is not a problem with this unit.	Turn the power off then back on.
		Some USB storage devices may not be recognized properly.
File cannot be played.	Is the file copyright-protected (by DRM)?	Copyright-protected files cannot be played.
	This is not a problem with this unit.	Files stored on a computer cannot be played.
		It may not be possible to play some files.
Folder or file names are not displayed or are not properly displayed.	Do the folder or file names contain more than 30 characters?	The maximum number of characters displayable for the folder and file names is 30.
Folder or file names are not displayed in alphabetical order.	This is not a problem with this unit.	The order in which the folder and file names are displayed depends on the order in which the folders or files were recorded on the USB storage device.
Much time is required to recognize the USB storage device.	What is the USB storage devices capacity?	Some time may be required to load the data when large capacity USB storage devices are connected (this could take several minutes).
Power is not supplied to the USB storage device.	Is AUTH ERR displayed on the front panel display? No power is supplied if the power consumption is too high.	Turn the power off then back on.
		Turn the power off, then disconnect and reconnect the USB storage device.
		Press INPUT to switch to the other mode, then switch again to the USB mode.

When an iPod/iPhone is connected

Problem	Remedy
Can't operate the iPod/iPhone by the remote control.	Make sure the iPod/iPhone is connected correctly (refer to <i>iPod/iPhone playback</i> on page 18).
Can't operate the iPod/iPhone.	Make sure the iPod/iPhone is connected correctly (refer to <i>iPod/iPhone playback</i> on page 18). If the iPod/iPhone is experiencing a hangup, try resetting the iPod/iPhone, and reconnect it to the unit.

Network

Problem	Check	Remedy
Cannot access to the network.	The LAN cable is not firmly connected.	Firmly connect the LAN cable (page 12).
	The router is not switched on.	Switch on the router.
	Is the network type correctly set up?	If set to Auto, the network connection is switched to wired or wireless depending on whether the unit is connected to a LAN cable when the power is turned ON .
Cannot access to the component or computer connected via network.	Internet security software is currently installed in the connected component.	There are cases where a component with Internet security software installed cannot be accessed.
	The audio component on the network which has been switched off is switched on.	Switch on the audio component on the network before switching on this unit.
	The component connected to the network is not properly set.	If the client is automatically authorized, you need to enter the corresponding information again. Check whether the connection status is set to "Do not authorize".
	There are no playable audio files on the component connected to the network.	Check the audio files stored on the component connected to the network.
Playback does not start.	The component is currently disconnected from this unit or the power supply.	Check whether the component is properly connected to this unit or the power supply.
The computer or Internet Radio is not properly operated.	The corresponding IP address is not properly set.	Switch on the built-in DHCP server function of your router, or set up the network manually according to your network environment (page 21).
	The IP address is being automatically configured.	The automatic configuration process takes time. Please wait.
The audio files stored on components on the network, such as a computer, cannot be played back.	Windows Media Player 11 or Windows Media Player 12 is not currently installed on your PC.	Install Windows Media Player 11 or Windows Media Player 12 on your PC (page 32).
	Audio files were recorded in formats other than MP3, WAV (LPCM only), MPEG-4 AAC, FLAC, WMA, AIFF, and ALAC.	Play back audio files recorded in MP3, WAV (LPCM only), MPEG-4 AAC, FLAC, WMA, AIFF, or ALAC. Note that some audio files recorded in these formats may not be played back on this unit.
	Audio files recorded in MPEG-4 AAC or FLAC are being played back on Windows Media Player 11 or Windows Media Player 12.	Audio files recorded in MPEG-4 AAC or FLAC cannot be played back on Windows Media Player 11 or Windows Media Player 12. Try using another server. Refer to the operation manual supplied with your server.
	The component connected to the network is not properly operated.	Check whether the component is affected by special circumstances or is in the sleep mode. Try rebooting the component if necessary.
	The component connected to the network does not permit file sharing.	Try changing the settings for the component connected to the network.
	The folder stored on the component connected to the network has been deleted or damaged.	Check the folder stored on the component connected to the network.
	Network connections could be restricted due to the computer's network settings, security settings, etc.	Check the computer's network settings, security settings, etc.

Problem	Check	Remedy
Cannot access Windows Media Player 11 or Windows Media Player 12.	In case of Windows Media Player 11: You are currently logged onto the domain through your PC with Windows XP or Windows Vista installed. In case of Windows Media Player 12: You are currently logged onto the domain through your PC with Windows 7 installed.	Instead of logging onto the domain, log onto the local machine.
Audio playback is undesirably stopped or disturbed.	The audio file currently being played back was not recorded in a format playable on this unit.	Check whether the audio file was recorded in a format supported by this unit. Check whether the folder has been damaged or corrupted. Even audio files listed as playable on this unit may sometimes not be played back or displayed (page 56).
	The LAN cable is currently disconnected.	Connect the LAN cable properly (page 12).
	There is heavy traffic on the network with the Internet being accessed on the same network.	Use 100BASE-TX to access the components on the network.
	When in the DMR mode, depending on the external controller being used, playback may be interrupted when a volume operation is performed from the controller.	In this case, adjust the volume from the unit or remote control.
	There is a connection routed through a wireless LAN on the same network.	There may be a shortage of bandwidth on the 2.4 GHz band used by the wireless LAN. Make wired LAN connections not routed through a wireless LAN. Install away from any devices emitting electromagnetic waves on the 2.4 GHz band (microwave ovens, game consoles, etc.). If this does not solve the problem, stop using other devices that emit electromagnetic waves.
Cannot listen to Internet Radio stations.	The firewall settings for components on the network are currently in operation.	Check the firewall settings for components on the network.
	You are currently disconnected from the Internet.	Check the connection settings for components on the network, and consult with your network service provider if necessary (page 12).
	The broadcasts from an Internet Radio station are stopped or interrupted.	Some Internet Radio stations on the list of Internet Radio stations for this unit (page 53) may occasionally not be available for listening.

Wireless LAN

Problem	Check	Remedy
Network cannot be accessed via wireless LAN.	Is the LAN cable connected to the unit?	Be sure the LAN cable is not connected to the unit, and then the unit OFF and ON again.
	Is the Network type set to Wired?	In the Network configuration screen in the Web browser, set Network type to Auto.
	This unit and base unit (wireless LAN router, etc.) are too far apart or there is an obstacle between them.	Improve the wireless LAN environment by moving the unit and base unit closer together, etc.
	There is a microwave oven or other device generating electromagnetic waves near the wireless LAN environment.	Use the system in a place away from microwave ovens or others device generating electromagnetic waves. Avoid using devices generating electromagnetic waves as much as possible when using the system with the wireless LAN.
	Multiple wireless devices are connected to the wireless LAN router.	When connecting multiple wireless devices, their IP addresses must be changed.
	Wireless LAN connections cannot be established between the unit and base unit (wireless LAN router, etc.).	The unit must be set in order to establish wireless LAN connections. See <i>Connecting using wireless LAN</i> on page 12.
	The IP address settings of the unit does not match the settings of the wireless LAN router, etc.	Check the IP address settings of the unit (including the DHCP setting). If the unit's DHCP setting is on, turn the unit's power off, then turn the power back on. Check that the IP address of the unit matches the settings of the wireless LAN router, etc. If the unit's DHCP setting is off, set an IP address matching the network of the base unit (wireless LAN router, etc.). For example, if the wireless LAN router's IP address is "192.168.1.1", set the unit's IP address to "192.168.1.XXX" (*1), the subnet mask to "255.255.255.0", the gateway and DNS to "192.168.1.1". (*1) Set the "XXX" in "192.168.1.XXX" to a number between 2 and 248 that is not assigned to other devices.
	The access point is set to conceal the SSID.	In this case, the SSID may not be displayed on the access point list screen. If not, set the SSID, etc., by making the wireless LAN settings on the unit manually.
Doesn't play properly when using the Wireless Direct function.	The access point's security settings use WEP 152-bit length code key or shared key authentication.	The unit does not support WEP 152-bit length code key or shared key authentication.
		The Wireless Direct function may not operate properly depending on the condition of signal reception and the wireless LAN device connected. In such cases, bring the wireless devices closer together and in other ways improve the conditions for wireless LAN reception.
Set to network standby mode, but during standby AirPlay and DMR do not work.	Are you using Connecting to a router without WPS-PBC function or Wireless Direct?	If you turn the power OFF immediately after using Connecting to a router without WPS-PBC function or Wireless Direct, network standby mode will be temporarily turned OFF . Once the power is turned ON again, the network standby mode settings will be restored.
	Have you removed the power cord?	If you remove and then reinsert the power cord, network standby will be temporarily turned OFF . Once the power is turned ON again, the network standby mode settings will be restored.
After turning on the power, the NETWORK indicator flashes blue.		If you removed the power cord while connecting to a router with WPS-PBC function, the settings may remain in effect when the power is next turned back on. Turn the power OFF , and then turn it back ON again.

About network playback

The network playback function such as Internet Radio or Music Server of this unit uses the following technologies:

Windows Media Player

See Windows Media Player 11/Windows Media Player 12 on page 32 for more on this.

DLNA



DLNA CERTIFIED™ Audio Player

The Digital Living Network Alliance (DLNA) is a cross-industry organization of consumer electronics, computing industry and mobile device companies. Digital Living provides consumers with easy sharing of digital media through a wired or wireless network in the home.

The DLNA certification logo makes it easy to find products that comply with the DLNA Interoperability Guidelines. This unit complies with DLNA Interoperability Guidelines v1.5.

When a computer running DLNA server software or other DLNA compatible device is connected to this player, some setting changes of software or other devices may be required. Please refer to the operating instructions for the software or device for more information.

DLNA™, the DLNA Logo and DLNA CERTIFIED™ are trademarks, service marks, or certification marks of the Digital Living Network Alliance.

Content playable over a network

- Even when encoded in a compatible format, some files may not play correctly.
- Movie or Photo files cannot be played back.
- There are cases where you cannot listen to an Internet Radio station even if the station can be selected from a list of radio stations.
- Some functions may not be supported depending on the server type or version used.
- Supported file formats vary by server. As such, files not supported by your server are not displayed on this unit. For more information check with the manufacturer of your server.

Disclaimer for Third Party Content

Access to content provided by third parties requires a high speed internet connection and may also require account registration and a paid subscription.

Third party content services may be changed, suspended, interrupted, or discontinued at any time without notice, and Pioneer disclaims any liability in connection with such occurrences.

Pioneer does not represent or warrant that content services will continue to be provided or available for a particular period of time, and any such warranty, express or implied, is disclaimed.

About playback behavior over a network

- Playback may stall when the computer is switched off or any media files stored on it are deleted while playing content.
- If there are problems within the network environment (heavy network traffic, etc.) content may not be displayed or played properly (playback may be interrupted or stalled). For best performance, a 100BASE-TX connection between player and computer is recommended.
- If several clients are playing simultaneously, as the case may be, playback is interrupted or stalled.
- Depending on the security software installed on a connected computer and the setting of such software, network connection may be blocked.

Pioneer is not responsible for any malfunction of the player and/or the Music Server features due to communication error/malfunctions associated with your network connection and/or your computer, or other connected equipment. Please contact your computer manufacturer or Internet service provider.

Windows Media is either a registered trademark or trademark of Microsoft Corporation in the United States and/or other countries.

This product includes technology owned by Microsoft Corporation and cannot be used or distributed without a license from Microsoft Licensing, Inc.

Microsoft®, Windows®7, Windows Vista®, Windows®XP, Windows®2000, Windows®Millennium Edition, Windows®98, and WindowsNT® are either registered trademarks or trademarks of Microsoft Corporation in the United States and/or other countries.

Authorizing this unit

In order to be able to play with Music Server, this unit must be authorized. This happens automatically when the unit makes a connection over the network to the computer. If not, please authorize this unit manually on the computer.

The authorization (or permission) method for access varies depending on the type of server currently being connected. For more information on authorizing this unit, refer to the instruction manual of your server.

aacPlus

The AAC decoder uses aacPlus developed by Coding Technologies
(www.codingtechnologies.com).

FLAC

FLAC Decoder

Copyright © 2000, 2001, 2002, 2003, 2004, 2005, 2006, 2007, 2008, 2009 Josh Coalson

Redistribution and use in source and binary forms, with or without modification, are permitted provided that the following conditions are met:

- Redistributions of source code must retain the above copyright notice, this list of conditions and the following disclaimer.
- Redistributions in binary form must reproduce the above copyright notice, this list of conditions and the following disclaimer in the documentation and/or other materials provided with the distribution.
- Neither the name of the Xiph.org Foundation nor the names of its contributors may be used to endorse or promote products derived from this software without specific prior written permission.

THIS SOFTWARE IS PROVIDED BY THE COPYRIGHT HOLDERS AND CONTRIBUTORS "AS IS" AND ANY EXPRESS OR IMPLIED WARRANTIES, INCLUDING, BUT NOT LIMITED TO, THE IMPLIED WARRANTIES OF MERCHANTABILITY AND FITNESS FOR A PARTICULAR PURPOSE ARE DISCLAIMED. IN NO EVENT SHALL THE FOUNDATION OR CONTRIBUTORS BE LIABLE FOR ANY DIRECT, INDIRECT, INCIDENTAL, SPECIAL, EXEMPLARY, OR CONSEQUENTIAL DAMAGES (INCLUDING, BUT NOT LIMITED TO, PROCUREMENT OF SUBSTITUTE GOODS OR SERVICES; LOSS OF USE, DATA, OR PROFITS; OR BUSINESS INTERRUPTION) HOWEVER CAUSED AND ON ANY THEORY OF LIABILITY, WHETHER IN CONTRACT, STRICT LIABILITY, OR TORT (INCLUDING NEGLIGENCE OR OTHERWISE) ARISING IN ANY WAY OUT OF THE USE OF THIS SOFTWARE, EVEN IF ADVISED OF THE POSSIBILITY OF SUCH DAMAGE.

Radio wave caution

This unit uses a 2.4 GHz radio wave frequency, which is a band used by other wireless systems (see list below). To prevent noise or interrupted communication, do not use this unit nearby such devices, or make sure these devices are switched off during use.

- Cordless phones
- Cordless facsimiles
- Microwave ovens
- Wireless LAN devices (IEEE802.11b/g)
- Wireless AV equipment
- Wireless controllers for game systems
- Microwave-based health aids
- Some baby monitors

Other, less common, equipment that may operate on the same frequency:

- Anti-theft systems
- Amateur radio stations (HAM)
- Warehouse logistic management systems
- Discrimination systems for train or emergency vehicles

Note

- In the event noise appears in your television image, there is the possibility that a *Bluetooth* wireless technology enabled device or this unit (including products supported by this unit) are causing signal interference with the antenna input connector of your television, video, satellite tuner, etc. In this event, increase the distance between the antenna input connector and the *Bluetooth* wireless technology enabled device or this unit (including products supported by this unit).
- If there is something obstructing the path between this unit (including devices supported by this unit) and the device equipped with *Bluetooth* wireless technology (such as a metal door, concrete wall, or insulation containing tinfoil), you may need to change the location of your system to prevent signal noise and interruptions.

Scope of operation

Use of this unit is limited to home use. (Transmission distances may be reduced depending on communication environment).

In the following locations, poor condition or inability to receive radio waves may cause the audio to be interrupted or stopped:

- In reinforced concrete buildings or steel framed or iron-framed buildings.
- Near large metallic furniture.
- In a crowd of people or near a building or obstacle.
- In a location exposed to the magnetic field, static electricity or radio wave interference from radio communication equipment using the same frequency band (2.4 GHz) as this unit, such as a 2.4 GHz wireless LAN device (IEEE802.11b/g) or microwave oven.
- If you live in a heavily populated residential area (apartment, townhouse, etc.) and if your neighbor's microwave is placed near your system, you may experience radio wave interference. If this occurs, move your unit to a different place. When the microwave is not in use, there will be no radio wave interference.

Radio wave reflections

The radio waves received by this unit include the radio wave coming directly from the device equipped with *Bluetooth* wireless technology (direct wave) and waves coming from various directions due to reflections by walls, furniture and building (reflected waves). The reflected waves (due to obstacles and reflecting objects) further produce a variety of reflected waves as well as variation in reception condition depending on locations. If the audio cannot be received properly due to this phenomenon, try moving the location of the device equipped with *Bluetooth* wireless technology a little. Also note that audio may be interrupted due to the reflected waves when a person crosses or approaches the space between this unit and the device equipped with *Bluetooth* wireless technology.

Precautions regarding connections to products supported by this unit

- Complete connections for all devices supported by this unit, including all audio cords and power cables before connecting them to this unit.
- After completing connections to this unit, check the audio and power cables to confirm that they not twisted together.
- When disconnecting this unit, confirm that you have sufficient working space in the surrounding area.
- When changing connections of audio or other cables for products supported by this unit, confirm that you have sufficient working space in the surrounding area.

Supported audio file formats

This unit supports the following file formats. Note that some file formats are not available for playback although they are listed as playable file formats. Also, the compatibility of file formats varies depending on the type of server. Check with your server to ensure the compatibility of file formats supported by your server.

- If an attempt is made to play files with unsupported formats, the sound may be intermittent or be accompanied by noise. In such cases, confirm that the file format is compatible with this unit.
- Internet Radio playback may be affected by the Internet communications environment, and in this case playback may not be possible even with the file formats listed here.
- For WAV, FLAC, AIFF and Apple Lossless files, if music files with the same format, sampling frequency, quantization bitrate and channel are queued up sequentially, gapless playback will be possible.
 - If the format has been changed on the server (transcode), gapless playback will not be possible.
 - Gapless playback is not possible in DMR mode.

Music files

Category	Extension	Stream		
MP3 <a>	.mp3	MPEG-1 Audio Layer-3	Sampling frequency	32 kHz, 44.1 kHz, 48 kHz
			Quantization bitrate	16 bit
			Channel	2 ch
			Bitrate	8 kbps to 320 kbps
			VBR/CBR	Supported/Supported
WAV	.wav	LPCM	Sampling frequency 	32 kHz, 44.1 kHz, 48 kHz, 88.2 kHz, 96 kHz, 176.4 kHz, 192 kHz
			Quantization bitrate	16 bit, 24 bit
			Channel	2 ch
WMA	.wma	WMA 2/7/8/9 <c>	Sampling frequency	32 kHz, 44.1 kHz, 48 kHz
			Quantization bitrate	16 bit
			Channel	2 ch
			Bitrate	5 kbps to 320 kbps
			VBR/CBR	Supported/Supported
AAC	.m4a .aac .3gp .3g2	MPEG-4 AAC LC MPEG-4 HE AAC	Sampling frequency	32 kHz, 44.1 kHz, 48 kHz
			Quantization bitrate	16 bit
			Channel	2 ch
			Bitrate	16 kbps to 320 kbps
			VBR/CBR	Supported/Supported
Apple Lossless	.m4a .mp4	Apple Lossless	Sampling frequency	32 kHz, 44.1 kHz, 48 kHz, 88.2 kHz, 96 kHz, 176.4 kHz, 192 kHz
			Quantization bitrate	16 bit, 24 bit
			Channel	2 ch

Category	Extension	Stream		
FLAC <d>	.flac	FLAC	Sampling frequency 	32 kHz, 44.1 kHz, 48 kHz, 88.2 kHz, 96 kHz, 176.4 kHz, 192 kHz
			Quantization bitrate	16 bit, 24 bit
			Channel	2 ch
AIFF	.aiff .aif	.aiff .aif	Sampling frequency	32 kHz, 44.1 kHz, 48 kHz, 88.2 kHz, 96 kHz, 176.4 kHz, 192 kHz
			Quantization bitrate	16 bit, 24 bit
			Channel	2 ch

- a "MPEG Layer-3 audio decoding technology licensed from Fraunhofer IIS and Thomson multimedia."
- b 32 kHz, 176.4 kHz and 192 kHz support 2-channel audio sources only.
- c Files encoded using Windows Media Codec 9 may be playable but some parts of the specification are not supported; specifically, Pro, Lossless, Voice.
- d Uncompressed FLAC files are not supported. Pioneer does not guarantee playback.

About Wi-Fi®



The Wi-Fi CERTIFIED Logo is a certification mark of the Wi-Fi Alliance.

About iPod/iPhone/iPad



AirPlay works with iPhone, iPad and iPod touch with iOS 4.3.3 or later, and Mac and PC with iTunes 10.2.2 or later.

USB works with iPhone 6, iPhone 6 Plus, iPhone 5, iPhone 5s, iPhone 5c, iPhone 4s, iPhone 4, iPhone 3GS, iPod touch (4th through 5th generation) and iPod nano (4th through 7th generation).

"Made for iPod" and "Made for iPhone" mean that an electronic accessory has been designed to connect specifically to iPod or iPhone, respectively, and has been certified by the developer to meet Apple performance standards. Apple is not responsible for the operation of this device or its compliance with safety and regulatory standards. Please note that the use of this accessory with iPod, iPhone, or iPad may affect wireless performance.

Apple, AirPlay, iPad, iPhone, iPod, iPod nano and iPod touch, iTunes, Safari, Bonjour and Mac are trademarks of Apple Inc., registered in the U.S. and other countries.

The AirPlay logo is a trademark of Apple Inc.

App Store is a service mark of Apple Inc.

Apple Lossless Audio Codec

Copyright © 2011 Apple Inc. All rights reserved.

Licensed under the Apache License, Version 2.0. You may obtain a copy of the License at <http://www.apache.org/licenses/LICENSE-2.0>.

Dolby Digital



Manufactured under license from Dolby Laboratories. Dolby and the double-D symbol are trademarks of Dolby Laboratories.

Please see the Dolby Laboratories website for more details.

DTS



For DTS patents, see <http://patents.dts.com>. Manufactured under license from DTS Licensing Limited. DTS, the Symbol, & DTS and the Symbol together are registered trademarks, and DTS Digital Surround is a trademark of DTS, Inc. © DTS, Inc. All Rights Reserved.

About Spotify



Spotify Connect

Spotify is a digital music-streaming service that gives you access to millions of songs instantly. This device is ready for Spotify Connect, which lets you play music on your audio system, using the Spotify app as a remote. For service availability in your country check www.spotify.com.

Chapter 18:

Preset code list

Presetting the following manufacturer codes to the remote control for this unit will allow this unit's remote control to control other devices.

Key: Manufacturer / Code

TV

Pioneer 0113, 0233, 0252, 0275, 0291, 0295, 0296, 0305	Asuka 0140, 0141, 0143, 0228, 0229	Casio 0221	Dixi 0142, 0149, 0152, 0154, 0155, 0229
A.R. Systems 0155	Atlantic 0141, 0149, 0152, 0155, 0228	Cathay 0149, 0152, 0155	DTS 0142, 0154
Acme 0141	Atori 0142, 0154	CCE 0229	Dual 0141, 0155, 0229
Acura 0142, 0154	Auchan 0156	Centurion 0149, 0152, 0155	Dual-Tec 0141, 0142
ADC 0140	Audiosonic 0125, 0141, 0142, 0143, 0149, 0152, 0155, 0229	Century 0138	Dumont 0138, 0141, 0144, 0229
Admiral 0138, 0139, 0140, 0145, 0146	AudioTon 0125, 0141, 0229	CGE 0125, 0132	Dux 0152
Adyson 0141, 0228, 0229	Ausind 0132	Cimline 0142, 0154	Dynatron 0149, 0152, 0155
Agashi 0228, 0229	Autovox 0132, 0138, 0140, 0141, 0229	City 0142, 0154	Elbe 0125, 0133, 0155, 0229
Agazi 0140	Awa 0228, 0229	Clarivox 0152	Elcit 0138
Aiko 0141, 0142, 0154, 0155, 0228, 0229	Baird 0229	Clatronic 0125, 0132, 0140, 0141, 0142, 0143, 0149, 0150, 0154, 0155, 0229	Electa 0151
Aim 0155	Bang & Olufsen 0138, 0230	CMS 0228	ELECTRO TECH 0142
Aiwa 0199	Basic Line 0142, 0143, 0149, 0154, 0155, 0229	CMS Hightec 0229	Elin 0141, 0149, 0152, 0154, 0155, 0228
Akai 0142, 0143, 0149, 0152, 0154, 0155, 0228, 0229	Bastide 0141, 0229	Concorde 0142, 0154	Elite 0143, 0149, 0155
Akiba 0143, 0155	Baur 0152, 0155	Condor 0125, 0141, 0149, 0150, 0154, 0155, 0228	Elman 0144
Akura 0140, 0143, 0154, 0155	Bazin 0229	Contec 0141, 0142, 0147, 0154, 0228	Elta 0142, 0154, 0228
Alaron 0228	Beko 0125, 0150, 0155, 0175	Continental Edison 0148	Emerson 0125, 0138, 0155
Alba 0125, 0141, 0142, 0143, 0147, 0150, 0152, 0154, 0155, 0190, 0193, 0203, 0228	Benq 0219	Cosmel 0142, 0154	Epson 0216
Alcyon 0132	Beon 0149, 0152, 0155	Crosley 0132, 0138	Erres 0149, 0152, 0155
Allorgan 0229	Best 0125	Crown 0125, 0132, 0142, 0149, 0150, 0152, 0154, 0155	ESC 0229
Allstar 0149, 0155	Bestar 0125, 0149, 0155	CS Electronics 0141, 0143, 0228	Etron 0142
AMOi 0224	Binatone 0141, 0229	CTC 0143	Eurofeel 0229, 0140
Amplivision 0125, 0141, 0156, 0229	Blue Sky 0143, 0155	CTC Clatronic 0144	Euroline 0152
Amstrad 0140, 0142, 0143, 0154, 0155	Blue Star 0151	Cybertron 0143	Euroman 0125, 0140, 0141, 0149, 0155, 0228, 0229
Anam 0142	Boots 0141, 0229	Daewoo 0128, 0141, 0142, 0149, 0154, 0155, 0169, 0179, 0206, 0228, 0229	Europhon 0141, 0144, 0149, 0155, 0228, 0229
Anglo 0142, 0154	BPL 0151, 0155	Dainichi 0143, 0228	Expert 0156
Anitech 0132, 0140, 0142, 0154, 0155	Brandt 0148, 0153, 0157, 0159	Dansai 0140, 0149, 0152, 0155, 0228, 0229	Exquisit 0155
Ansonic 0125, 0133, 0142, 0144, 0154, 0155	Brinkmann 0155	Dantax 0125, 0152	Fenner 0142, 0154
Arcam 0228, 0229	Brionvega 0138, 0149, 0152, 0155	Dawa 0155	Ferguson 0148, 0152, 0153, 0157
Arcam Delta 0141	Britannia 0141, 0228, 0229	Daytron 0142, 0154	Fidelity 0141, 0145, 0155, 0228
Aristona 0149, 0152, 0155	Bruns 0138	De Graaf 0145	Filsai 0229
Arthur Martin 0156	BTC 0143	Decca 0141, 0149, 0152, 0155, 0229	Finlandia 0145
ASA 0138, 0146	Bush 0142, 0143, 0145, 0147, 0149, 0151, 0152, 0154, 0155, 0180, 0193, 0229	Denver 0213, 0218	Finlux 0132, 0138, 0141, 0144, 0149, 0152, 0155, 0229
Asberg 0132, 0149, 0155	Capsonic 0140	Desmet 0149, 0152, 0155	Firstline 0141, 0142, 0149, 0154, 0155, 0228, 0229
Astra 0142	Carena 0155	Diamant 0155	Fisher 0125, 0138, 0141, 0147, 0150, 0229
	Carrefour 0147	Diamond 0228	
	Cascade 0142, 0154, 0155		

Flint 0149, 0155	HiLine 0155	Kingsley 0141, 0228	Memphis 0142, 0154
Formenti 0132, 0138, 0139, 0141, 0152, 0228	Hinari 0142, 0143, 0147, 0149, 0152, 0154, 0155	Kneissel 0125, 0133, 0155	Mercury 0154, 0155
Formenti/Phoenix 0228	Hisawa 0143, 0151, 0156	Kolster 0149, 0155	Metz 0138, 0299, 0300, 0301, 0302
Fortress 0138, 0139	Hitachi 0137, 0141, 0145, 0146, 0147, 0155, 0191, 0226, 0229	Konka 0143	Micromaxx 0140, 0142
Fraba 0125, 0155	Hornophon 0149, 0155	Korpel 0149, 0152, 0155	Microstar 0140, 0142
Friac 0125	Hoshai 0143	Korting 0125, 0138	Minerva 0132
Frontech 0140, 0142, 0145, 0146, 0154, 0229	Huanyu 0141, 0228	Kosmos 0155	Minoka 0149, 0155
Fujitsu 0229	Hygashi 0141, 0228, 0229	Koyoda 0142	Mitsubishi 0138, 0147, 0149, 0155, 0200
Fujitsu General 0229	Hyper 0141, 0142, 0154, 0228, 0229	KTV 0141, 0229	Mivar 0125, 0132, 0133, 0141, 0228, 0229
Funai 0140	Hypson 0140, 0141, 0149, 0151, 0152, 0155, 0156, 0229	Kyoto 0228, 0229	Motion 0132
Galaxi 0155, 0150	Iberia 0155	Lasat 0125	MTC 0125, 0228
Galaxis 0125, 0155	ICE 0140, 0141, 0142, 0143, 0149, 0154, 0155, 0228, 0229	Lenco 0142, 0154	Multi System 0152
GBC 0142, 0147, 0154	ICeS 0228	Lenoir 0141, 0142, 0154	Multitech 0125, 0141, 0142, 0144, 0145, 0147, 0152, 0154, 0155, 0228, 0229
Geant Casino 0156	Imperial 0125, 0132, 0146, 0149, 0150, 0155	Leyco 0140, 0149, 0152, 0155	Murphy 0141, 0228
GEC 0141, 0146, 0149, 0152, 0155, 0229	Indiana 0149, 0152, 0155	LG 0125, 0136, 0141, 0142, 0145, 0149, 0152, 0154, 0155, 0186, 0189, 0196, 0220, 0228, 0229	Naonis 0145
Geloso 0142, 0145, 0154	Ingelen 0146	LG/GoldStar 0129	NEC 0147, 0229
General Technic 0142, 0154	Ingersol 0142, 0154	Liesenk 0152	Neckermann 0125, 0138, 0141, 0145, 0149, 0150, 0152, 0155, 0229
Genexxa 0143, 0146, 0149, 0155	Inno Hit 0132, 0141, 0142, 0143, 0149, 0152, 0154, 0155, 0229	Liesenkotter 0155	NEI 0149, 0152, 0155
Giant 0229	Interaction 0125	Life 0140, 0142	Neufunk 0154, 0155
GoldHand 0228	Interbuy 0142, 0154	Lifetec 0140, 0142, 0154, 0155	New Tech 0142, 0149, 0154, 0155, 0229
Goldline 0155	Interfunk 0125, 0138, 0146, 0149, 0152, 0155	Lloyds 0154	New World 0143
Goldstar 0125, 0141, 0142, 0145, 0149, 0152, 0154, 0155, 0228, 0229	International 0228	Loewe 0125, 0133, 0155, 0166, 0167	Nicamagic 0141, 0228
Goodmans 0140, 0142, 0147, 0149, 0152, 0154, 0155, 0222, 0229	Intervision 0125, 0140, 0141, 0144, 0155, 0229	Loewe Opta 0138, 0149, 0152	Nikkai 0140, 0141, 0143, 0149, 0152, 0154, 0155, 0228, 0229
Gorenje 0125, 0150	Irradio 0132, 0142, 0143, 0149, 0152, 0154, 0155	Luma 0145, 0152, 0154, 0155	Nobliko 0132, 0141, 0144, 0228
GPM 0143	Isukai 0143, 0155	Lumatron 0145, 0149, 0152, 0155, 0229	Nokia 0146
Graetz 0146	ITC 0141, 0229	Lux May 0149	Nordic 0229
Granada 0132, 0141, 0145, 0147, 0149, 0152, 0155, 0156, 0229	ITS 0143, 0149, 0151, 0155, 0228	Luxor 0141, 0145, 0229	Nordmende 0138, 0146, 0148, 0149
Grandin 0142, 0143, 0151, 0152	ITT 0142, 0146	M Electronic 0141, 0142, 0146, 0148, 0149, 0152	Nordvision 0152
Gronic 0229	ITV 0142, 0152, 0155	Magnadyne 0138, 0144, 0152	Novatronic 0155
Grundig 0124, 0125, 0132, 0155, 0162	JVC 0134, 0135, 0147, 0149, 0192	Magnafon 0132, 0141, 0144, 0228	Oceanic 0146, 0156
Halifax 0140, 0141, 0228, 0229	Kaisui 0141, 0142, 0143, 0151, 0154, 0155, 0228, 0229	Magnum 0140, 0142	Okano 0125, 0150, 0155
Hampton 0141, 0228, 0229	Kamosonic 0141	Mandor 0140	ONCEAS 0141
Hanseatic 0125, 0133, 0141, 0142, 0147, 0149, 0152, 0154, 0155, 0229	Kamp 0141, 0228	Manesth 0140, 0141, 0149, 0152, 0155, 0229	Opera 0155
Hantarex 0142, 0154, 0155	Kapsch 0146	Marantz 0149, 0152, 0155	Orbit 0149, 0155
Hantor 0155	Karcher 0125, 0141, 0142, 0152, 0155	Marelli 0138	Orion 0142, 0149, 0152, 0154, 0155, 0194
Harwood 0154, 0155	Kawasho 0228	Mark 0149, 0152, 0154, 0155, 0228, 0229	Orline 0155
HCM 0140, 0141, 0142, 0151, 0154, 0155, 0229	Kendo 0125, 0144, 0145, 0155	Masuda 0229	Osaki 0140, 0141, 0143, 0155, 0229
Hema 0154, 0229	KIC 0229	Matsui 0141, 0142, 0145, 0147, 0149, 0152, 0154, 0155, 0229	Oso 0143
Higashi 0228		Mediator 0149, 0152, 0155	Otto Versand 0139, 0141, 0147, 0149, 0151, 0152, 0155, 0229
		Medion 0140, 0142, 0155	Pael 0141, 0228
		M-Electronic 0154, 0155, 0228, 0229	
		Melvox 0156	
		Memorex 0142, 0154	

- Palladium** 0125, 0141, 0150, 0155, 0229
Palsonic 0229
Panama 0140, 0141, 0142, 0154, 0155, 0228, 0229
Panasonic 0123, 0146, 0155, 0158, 0164, 0214, 0217
Panavision 0155
Pathe Cinema 0125, 0133, 0141, 0156, 0228
Pausa 0142, 0154
Perdio 0155, 0228
Perfekt 0155
Philco 0125, 0132, 0138, 0155
Philharmonic 0141, 0229
Philips 0115, 0117, 0138, 0141, 0149, 0152, 0155, 0160, 0163, 0165, 0170, 0171, 0173, 0174, 0182, 0183, 0195, 0196, 0202, 0205, 0212, 0215
Phoenix 0125, 0138, 0149, 0152, 0155, 0228
Phonola 0138, 0149, 0152, 0155, 0228
Plantron 0140, 0149, 0154, 0155
Playsonic 0229
Poppy 0142, 0154
Prandoni-Prince 0132, 0145
Precision 0141, 0229
Prima 0142, 0146, 0154
Profex 0142, 0154
Profi-Tronic 0149, 0155
Proline 0149, 0155
Prosonic 0125, 0141, 0152, 0155, 0228, 0229, 0232
Protech 0140, 0141, 0142, 0144, 0149, 0152, 0229
Provision 0152, 0155
Pye 0149, 0152, 0155, 0198
Pymi 0142, 0154
Quandra Vision 0156
Quelle 0140, 0141, 0149, 0152, 0155, 0229
Questa 0147
Radialva 0155
Radio Shack 0155
Radiola 0149, 0152, 0155, 0229
Radiomarelli 0138, 0155
Radiotone 0125, 0149, 0154, 0155
Rank 0147
Recor 0155
Redstar 0155
Reflex 0155
Revox 0125, 0149, 0152, 0155
Rex 0140, 0145, 0146
RFT 0125, 0133, 0138
Rhapsody 0228
R-Line 0149, 0152, 0155
Roadstar 0140, 0142, 0143, 0154
Robotron 0138
Rowa 0228, 0229
Royal Lux 0125
RTF 0138
Saba 0138, 0146, 0148, 0153, 0157, 0159
Saisho 0140, 0141, 0142, 0154, 0229
Salora 0145, 0146
Sambers 0132, 0144
Samsung 0119, 0120, 0125, 0140, 0141, 0142, 0149, 0150, 0152, 0154, 0155, 0177, 0178, 0181, 0204, 0208, 0228, 0229
Sandra 0141, 0228, 0229
Sansui 0149, 0155
Sanyo 0125, 0133, 0141, 0147, 0154, 0187, 0228, 0229
SBR 0152, 0155
SCHAUB LORENTZ 0146
Schneider 0141, 0143, 0149, 0152, 0155, 0190, 0229
SEG 0140, 0141, 0144, 0147, 0152, 0154, 0155, 0190, 0228, 0229
SEI 0155
SEI-Sinudyne 0138, 0144, 0146
Seleco 0145, 0146, 0147
Sencora 0142, 0154
Sentra 0154
Serino 0228
Sharp 0130, 0131, 0139, 0147, 0184, 0207
Siarem 0138, 0144, 0155
Sierra 0149, 0155
Siesta 0125
Silva 0228
Silver 0147
Singer 0138, 0144, 0156
Sinudyne 0138, 0144, 0152, 0155
Skantic 0146
Solavox 0146
Sonitron 0125, 0229
Sonoko 0140, 0141, 0142, 0149, 0152, 0154, 0155, 0229
Sonolor 0146, 0156
Sontec 0125, 0149, 0152, 0155
Sony 0116, 0118, 0142, 0147, 0161, 0168, 0172, 0185, 0188, 0197, 0201, 0211, 0225, 0227
Sound & Vision 0143, 0144
Soundwave 0149, 0152, 0155
Standard 0141, 0142, 0143, 0149, 0154, 0155, 0229
Starlight 0152
Starlite 0154, 0155
Stenway 0151
Stern 0145, 0146
Strato 0154, 0155
Stylandia 0229
Sunkai 0142
Sunstar 0154, 0155
Sunwood 0142, 0149, 0154, 0155
Superla 0141, 0228, 0229
SuperTech 0154, 0155, 0228
Supra 0142, 0154
Susumu 0143
Sutron 0142, 0154
Sydney 0141, 0228, 0229
Sysline 0152
Sytong 0228
Tandy 0139, 0141, 0143, 0146, 0229
Tashiko 0144, 0145, 0147, 0228, 0229
Tatung 0141, 0149, 0152, 0155, 0229
TCM 0140, 0142
Teac 0155, 0229
Tec 0141, 0142, 0154, 0229
TEDELEX 0229
Teleavia 0148
Telecor 0155, 0229
Telefunken 0148, 0149, 0155, 0157
Telegazi 0155
Telemeister 0155
Telesonic 0155
Telestar 0155
Teletech 0142, 0152, 0154, 0155
Teleton 0141, 0229
Televideon 0228
Televiso 0156
Tensai 0142, 0143, 0149, 0154, 0155, 0229
Tesmet 0149
Tevion 0140, 0142
Textet 0141, 0154, 0228, 0229
Thomson 0121, 0122, 0141, 0148, 0149, 0153, 0155, 0157, 0159, 0210
Thorn 0152, 0155
Tokai 0149, 0155, 0229
Tokyo 0141, 0228
Tomashi 0151
Toshiba 0126, 0127, 0147, 0176, 0209, 0229
Towada 0146, 0229
Trakton 0229
Trans Continens 0155, 0229
Transtec 0228
Trident 0229
Triumph 0155
Vestel 0145, 0146, 0149, 0150, 0152, 0155, 0229
Vexa 0142, 0152, 0154, 0155
Victor 0147, 0149
VIDEOLOGIC 0228
Videologique 0141, 0143, 0228, 0229
VideoSystem 0149, 0155
Videotechnic 0228, 0229
Viewsonic 0223
Visiola 0141, 0228
Vision 0149, 0155, 0229
Vortec 0149, 0152, 0155
Voxson 0132, 0138, 0145, 0146, 0149, 0155
Waltham 0141, 0155, 0229
Watson 0149, 0152, 0155
Watt Radio 0141, 0144, 0228
Wega 0138, 0147, 0155
Wegavox 0154
Weltblick 0149, 0152, 0155, 0229
White Westinghouse 0141, 0144, 0152, 0155, 0228
Xrypton 0155
Yamishi 0155, 0229
Yokan 0155
Yoko 0125, 0140, 0141, 0142, 0143, 0149, 0152, 0154, 0155, 0228, 0229
Yorx 0143
Zanussi 0145, 0229

DVD

If operations are not possible using the preset codes below, you may be able to conduct operations with the preset codes for the BD.

Pioneer 2014	Eclipse 2180	Micromaxx 2097	Scott 2120, 2187
AEG 2188	Electrohome 2188	Microstar 2097	SEG 2116, 2178, 2181, 2189
Aiwa 2149	Elin 2188	Minoka 2188	Sharp 2097, 2141, 2174
Akai 2096	Elta 2142, 2188	Mizuda 2184, 2185	Sigmatek 2185
Akura 2186	Enzer 2178	Monyka 2178	Silva 2186
Alba 2122, 2133, 2143	Finlux 2180, 2188	Mustek 2101	Singer 2180, 2181
Amitech 2188	Gericom 2145	Mx Onda 2180	Skymaster 2153, 2181
AMW 2189	Global Solutions 2181	Naiko 2188	Skyworth 2186
Awia 2189	Global Sphere 2181	Neufunk 2178	Slim Art 2188
Bang & Olufsen 2191	Goodmans 2122, 2165, 2184	Nevir 2188	SM Electronic 2181
Bellagio 2189	Graetz 2178	NU-TEC 2177	Sony 2104, 2108, 2123, 2124, 2125, 2150, 2175
Best Buy 2185	Grundig 2148	Onkyo 2167	Soundmaster 2181
Brainwave 2188	Grunkel 2188	Optim 2179	Soundmax 2181
Brandt 2112, 2139	H&B 2184	Optimus 2099	Spectra 2189
Bush 2122, 2143, 2177, 2184	Haaz 2180, 2181	Orava 2184	Standard 2181
Cambridge Audio 2180	HiMAX 2185	Orbit 2189	Star Cluster 2181
CAT 2182, 2183	Hitachi 2110, 2178, 2185	Orion 2156	Starmedia 2184
Centrum 2183	Innovation 2097	P&B 2184	Sunkai 2188
CGV 2180, 2188	JVC 2119, 2136, 2152	Pacific 2181	Supervision 2181
Cinetec 2189	Kansai 2190	Panasonic 2113, 2114, 2121, 2127, 2131, 2170	Synn 2181
Clatronic 2184	Kenex 2188	Philips 2100, 2106, 2117, 2118, 2126, 2134, 2157	Tatung 2130, 2188
Coby 2190	Kenwood 2146	Pointer 2188	TCM 2097
Conia 2177	KeyPlug 2188	Portland 2188	Teac 2162, 2177, 2181
Continental Edison 2189	Kiwo 2188	Powerpoint 2189	Tec 2186
Crown 2188	Kingavon 2184	Prosonic 2190	Technika 2188
C-Tech 2181	Kiss 2178	Provision 2184	Telefunken 2183
CyberHome 2103, 2132	Koda 2184	Raite 2178	Tensai 2188
Daenyx 2189	KXD 2185	RedStar 2186, 2188, 2190	Tevion 2097, 2181, 2187
Daewoo 2130, 2154, 2188, 2189	Lawson 2181	Reoc 2181	Thomson 2098, 2112, 2155, 2159
Daewoo International 2189	Lecson 2179	Roadstar 2116, 2184	Tokai 2178, 2186
Dalton 2187	Lenco 2184, 2188	Ronin 2189	Toshiba 2102, 2156, 2168, 2169, 2172
Dansai 2179, 2188	LG 2111, 2115, 2135, 2138, 2160, 2171	Rowa 2177	TRANScotinents 2189
Daytek 2105, 2128, 2189	Life 2097	Rownsonic 2183	Trio 2188
Dayton 2189	Lifetec 2097	Saba 2112, 2139	TruVision 2185
DEC 2184	Limit 2181	Sabaki 2181	Wharfedale 2180, 2181
Decca 2188	Loewe 2151	Saivod 2188	Xbox 2098
Denon 2161, 2163	LogicLab 2181	Samsung 2110, 2137, 2158, 2173, 2176	Xlogic 2181, 2188
Denver 2164, 2184, 2186, 2190	Magnavox 2184	Sansui 2180, 2181, 2188	XMS 2188
Denzel 2178	Majestic 2190	Sanyo 2140, 2166	Yamada 2189
Diamond 2180, 2181	Marantz 2157	ScanMagic 2101	Yamaha 2106
DK Digital 2129	Marquant 2188	Schaub Lorenz 2188	Yamakawa 2178, 2189
Dmtech 2095	Matsui 2139	Schneider 2095	Yukai 2101, 2147
Dual 2178	Mecotek 2188	Scientific Labs 2181	
DVX 2181	Medion 2097		
Easy Home 2185	MiCo 2180		

BD

If operations are not possible using the preset codes below, you may be able to conduct operations with the preset codes for the DVD.

Pioneer 2034, 2192, 2255, 2258, 2259, 2260, 2281	JVC 2290, 2291, 2293, 2294, 2295, 2296	Onkyo 2289	Sony 2283, 2284, 2285, 2292
Denon 2310, 2311, 2312	LG 2286, 2287	Panasonic 2277, 2278, 2279	Toshiba 2288, 2262
Hitachi 2307, 2308, 2309	Marantz 2302, 2303	Philips 2280	Yamaha 2297, 2298, 2299
	Mitsubishi 2300, 2301	Samsung 2282	
		Sharp 2304, 2305, 2306	

Declaration of Conformity with regard to the R&TTE Directive 1999/5/EC

Manufacturer:

PIONEER HOME ELECTRONICS CORPORATION

1-1, Shin-ogura, Saiwai-ku,
Kawasaki-shi, Kanagawa
212-0031, Japan

EU Representative's:

Pioneer Europe NV

Haven 1087, Keetberglaan 1,
9120 Melsele, Belgium
<http://www.pioneer.eu>



Indoor use only

English:

Hereby, Pioneer, declares that this SBX-B70D is in compliance with the essential requirements and other relevant provisions of Directive 1999/5/EC.

Suomi:

Pioneer vakuuttaa täten että SBX-B70D tyyppinen laite on direktiivin 1999/5/EY oleellisten vaatimusten ja sitä koskevien direktiivin muiden ehtojen mukainen.

Nederlands:

Hierbij verklaart Pioneer dat het toestel SBX-B70D in overeenstemming is met de essentiële eisen en de andere relevante bepalingen van richtlijn 1999/5/EG

Français:

Par la présente Pioneer déclare que l'appareil SBX-B70D est conforme aux exigences essentielles et aux autres dispositions pertinentes de la directive 1999/5/CE

Svenska:

Härmed intygar Pioneer att denna SBX-B70D står i överensstämmelse med de väsentliga egenskapskrav och övriga relevanta bestämmelser som framgår av direktiv 1999/5/EG.

Dansk:

Undertegnede Pioneer erklærer herved, at følgende udstyr SBX-B70D overholder de væsentlige krav og øvrige relevante krav i direktiv 1999/5/EF

Deutsch:

Hiermit erklärt Pioneer, dass sich dieses SBX-B70D in Übereinstimmung mit den grundlegenden Anforderungen und den anderen relevanten Vorschriften der Richtlinie 1999/5/EG befindet". (BMW i)

Ελληνικά:

ΜΕ ΤΗΝ ΠΑΡΟΥΣΑ Pioneer ΔΗΛΩΝΕΙ ΟΤΙ SBX-B70D ΣΥΜΜΟΡΦΩΝΕΤΑΙ ΠΡΟΣ ΤΙΣ ΟΥΣΙΩΔΕΙΣ ΑΠΑΙΤΗΣΕΙΣ ΚΑΙ ΤΙΣ ΛΟΙΠΕΣ ΣΧΕΤΙΚΕΣ ΔΙΑΤΑΞΕΙΣ ΤΗΣ ΟΔΗΓΙΑΣ 1999/5/ΕΚ

Italiano:

Con la presente Pioneer dichiara che questo SBX-B70D è conforme ai requisiti essenziali ed alle altre disposizioni pertinenti stabilite dalla direttiva 1999/5/CE.

Español:

Por medio de la presente Pioneer declara que el SBX-B70D cumple con los requisitos esenciales y cualesquiera otras disposiciones aplicables o exigibles de la Directiva 1999/5/CE

Português:

Pioneer declara que este SBX-B70D está conforme com os requisitos essenciais e outras disposições da Directiva 1999/5/CE.

Čeština:

Pioneer tímto prohlašuje, že tento SBX-B70D je ve shodě se základními požadavky a dalšími příslušnými ustanoveními směrnice 1999/5/ES

Eesti:

Käesolevaga kinnitab Pioneer seadme SBX-B70D vastavust direktiivi 1999/5/EÜ põhinõuetele ja nimetatud direktiivist tulenevatele teistele asjakohastele sätetele.

Magyar:

Alulírott, Pioneer nyilatkozom, hogy a SBX-B70D megfelel a vonatkozó alapvető követelményeknek és az 1999/5/EC irányelv egyéb előírásainak.

Latviešu valoda:

Ar šo Pioneer deklarē, ka SBX-B70D atbilst Direktīvas 1999/5/EK būtiskajām prasībām un citiem ar to saistītajiem noteikumiem.

Lietuvių kalba:

Šiuo Pioneer deklaruoja, kad šis SBX-B70D atitinka esminius reikalavimus ir kitas 1999/5/EB Direktyvos nuostatas.

Malti:

Hawnhekk, Pioneer jiddikjara li dan SBX-B70D jikkonforma mal-htigijiet essenzjali u ma provvedimenti oħrajn rilevanti li hemm fid-Direttiva 1999/5/EC

Slovenščina:

Pioneer týmto vyhlasuje, že SBX-B70D spĺňa základné požiadavky a všetky príslušné ustanovenia Smernice 1999/5/ES.

Slovenščina:

Pioneer izjavlja, da je ta SBX-B70D v skladu z bistvenimi zahtevami in ostalimi relevantnimi določili direktive 1999/5/ES.

Română:

Prin prezenta, Pioneer declara ca acest SBX-B70D este in conformitate cu cerintele esentiale si alte prevederi ale Directivei 1999/5/EU.

български:

С настоящето, Pioneer декларира, че този SBX-B70D отговаря на основните изисквания и други съответни постановления на Директива 1999/5/EC.

Polski:

Niniejszym Pioneer oświadcza, że SBX-B70D jest zgodny z zasadniczymi wymogami oraz pozostałymi stosownymi postanowieniami Dyrektywy 1999/5/EC

Norsk:

Pioneer erklærer herved at utstyret SBX-B70D er i samsvar med de grunnleggende krav og øvrige relevante krav i direktiv 1999/5/EF.

Íslenska:

Hér með lýsir Pioneer yfir því að SBX-B70D er í samræmi við grunnkröfur og aðrar kröfur, sem gerðar eru í tilskipun 1999/5/EC

Hrvatski:

Ovimе tvrtka Pioneer izjavljue da je ovaj SBX-B70D u skladu osnovnim zahtjevima i ostalim odredbama Direktive 1999/5/EC.

<http://www.pioneer.co.uk>

<http://www.pioneer.eu>

© 2015 PIONEER HOME ELECTRONICS CORPORATION.
All rights reserved.

PIONEER HOME ELECTRONICS CORPORATION

1-1, Shin-ogura, Saiwai-ku, Kawasaki-shi, Kanagawa 212-0031, Japan

PIONEER ELECTRONICS (USA) INC.

P.O. BOX 1540, Long Beach, California 90801-1540, U.S.A. TEL: (800) 421-1404

PIONEER ELECTRONICS OF CANADA, INC.

340 Ferrier Street, Unit 2, Markham, Ontario L3R 2Z5, Canada TEL: 1-877-283-5901, 905-479-4411

PIONEER EUROPE NV

Haven 1087, Keetberglaan 1, B-9120 Melsele, Belgium TEL: 03/570.05.11

PIONEER ELECTRONICS ASIACENTRE PTE. LTD.

253 Alexandra Road, #04-01, Singapore 159936 TEL: 65-6472-7555

PIONEER ELECTRONICS AUSTRALIA PTY. LTD.

5 Arco Lane, Heatherton, Victoria, 3202, Australia, TEL: (03) 9586-6300

PIONEER ELECTRONICS DE MEXICO S.A. DE C.V.

Blvd.Manuel Avila Camacho 138 10 piso Col.Lomas de Chapultepec, Mexico, D.F. 11000 TEL: 55-9178-4270

K002_B3_En

<YOM200167-0003>

Printed in China



YOM200167-0003